

Independent Living

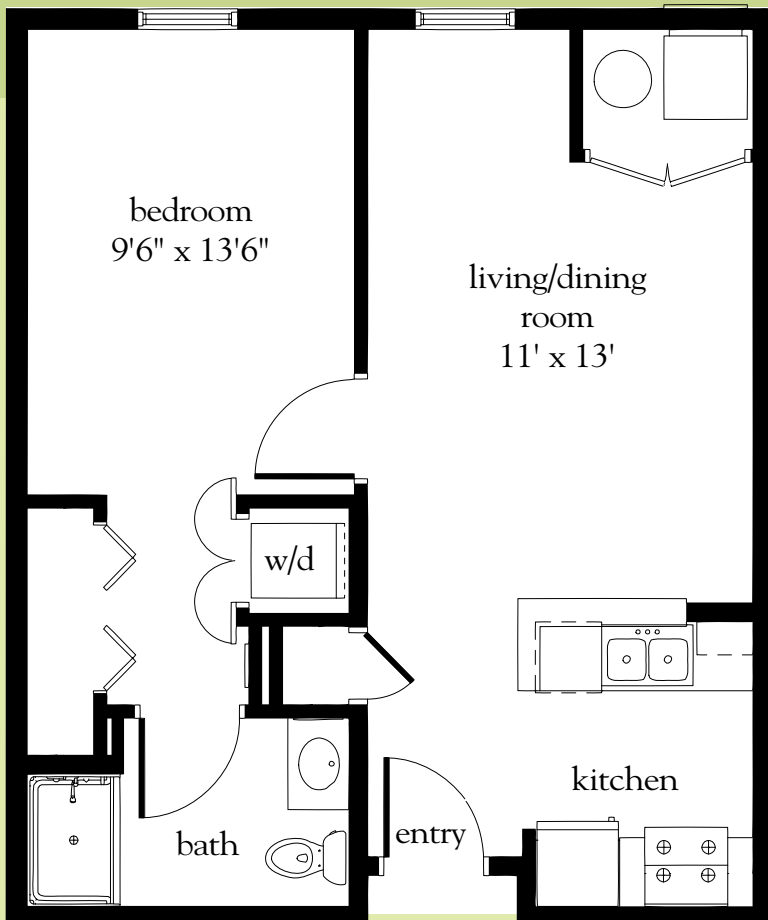
Atria NORTH POINT

INDEPENDENT LIVING FLOOR PLANS



Choose from nine thoughtfully designed floor plans to fit your style.

Measurements are an approximation and can vary by apartment.
All rates are subject to change.



The Azalea

600-700 sq. ft.

Apartment No. _____

Apartment Rate _____

Notes _____

Name _____

Date _____

Expires _____

1

One-Bedroom Floor Plan

2

The Boxwood

650-750 sq. ft.

One-Bedroom Floor Plan

Apartment No. _____

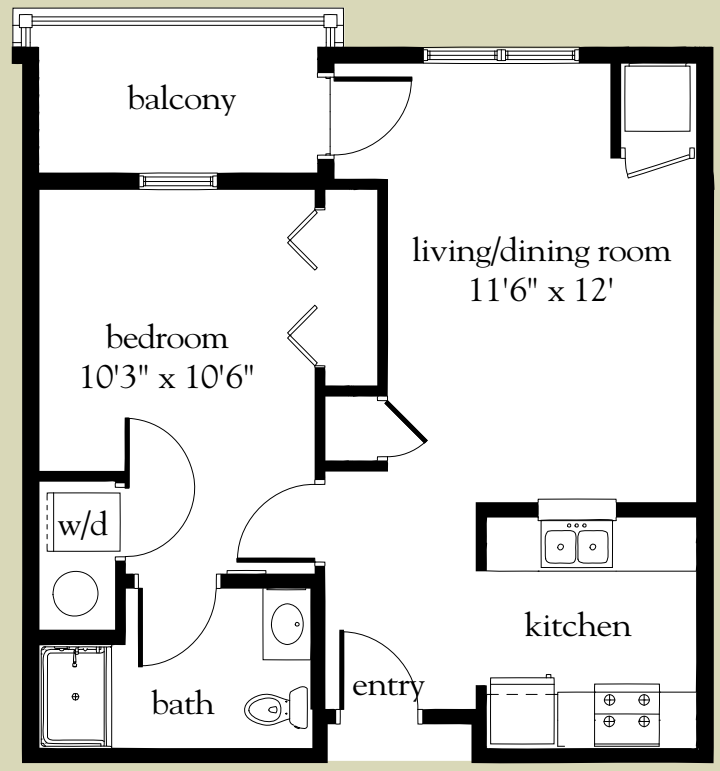
Apartment Rate _____

Notes _____

Name _____

Date _____

Expires _____



3

The Cherry

700-750 sq. ft.

One-Bedroom Floor Plan

Apartment No. _____

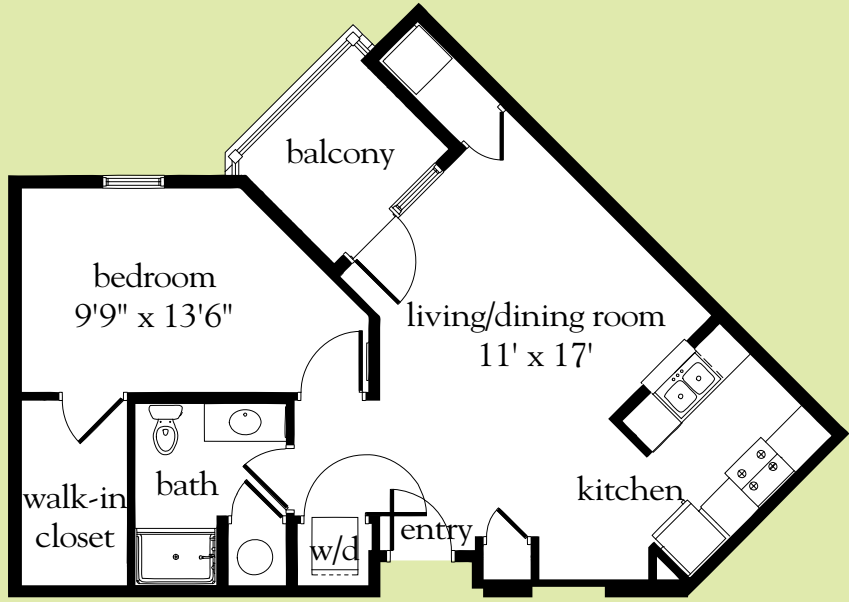
Apartment Rate _____

Notes _____

Name _____

Date _____

Expires _____



The Dogwood

850-1,000 sq. ft.

4

One-Bedroom Deluxe Floor Plan



Apartment No. _____

Apartment Rate _____

Notes _____

Name _____

Date _____

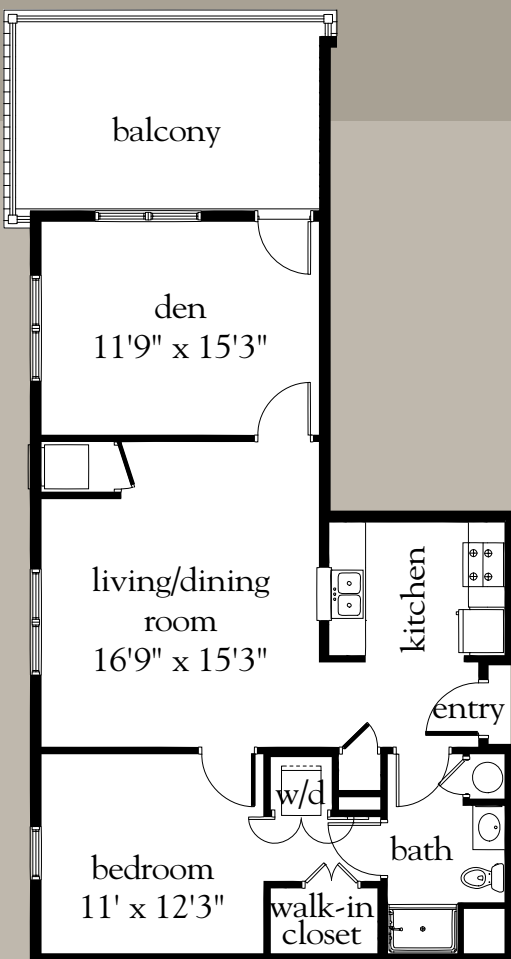
Expires _____

The Dogwood 2

850-1,000 sq. ft.

5

One-Bedroom Deluxe Floor Plan



Apartment No. _____

Apartment Rate _____

Notes _____

Name _____

Date _____

Expires _____

6

The Daffodil

950-1,000 sq. ft.

One-Bedroom Deluxe Floor Plan

Apartment No. _____

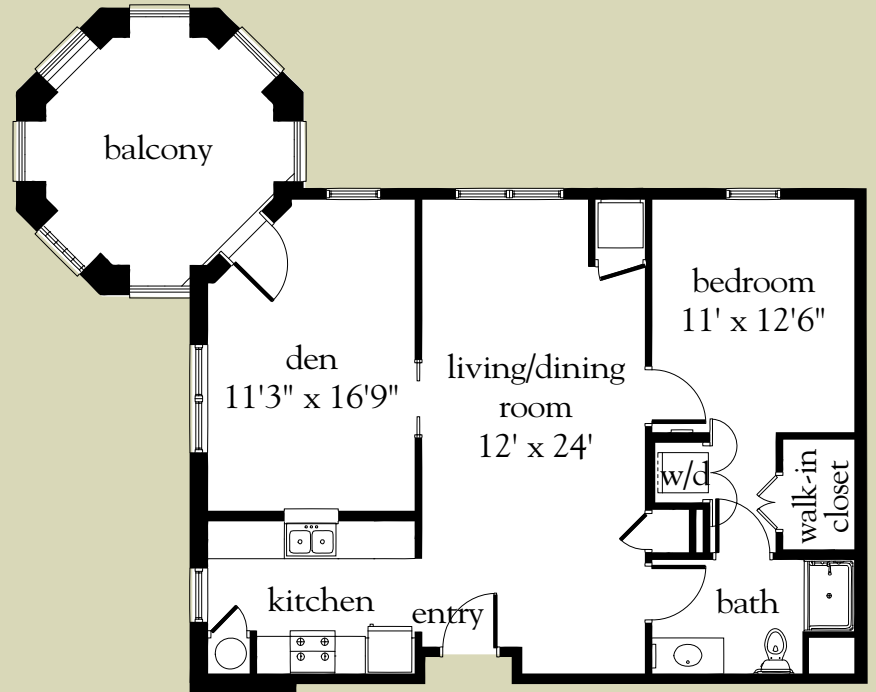
Apartment Rate _____

Notes _____

Name _____

Date _____

Expires _____



7

The Evergreen

950-1,180 sq. ft.

Two-Bedroom Floor Plan

Apartment No. _____

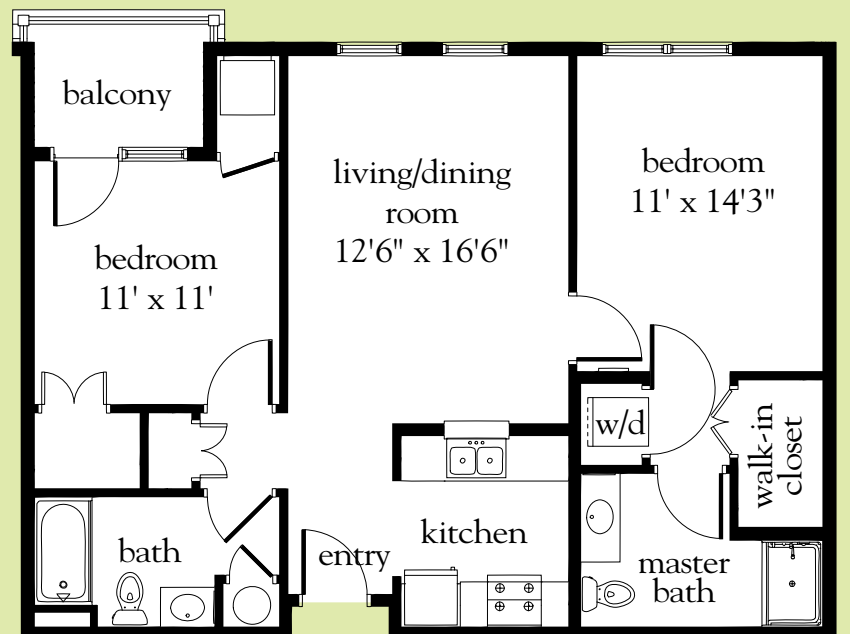
Apartment Rate _____

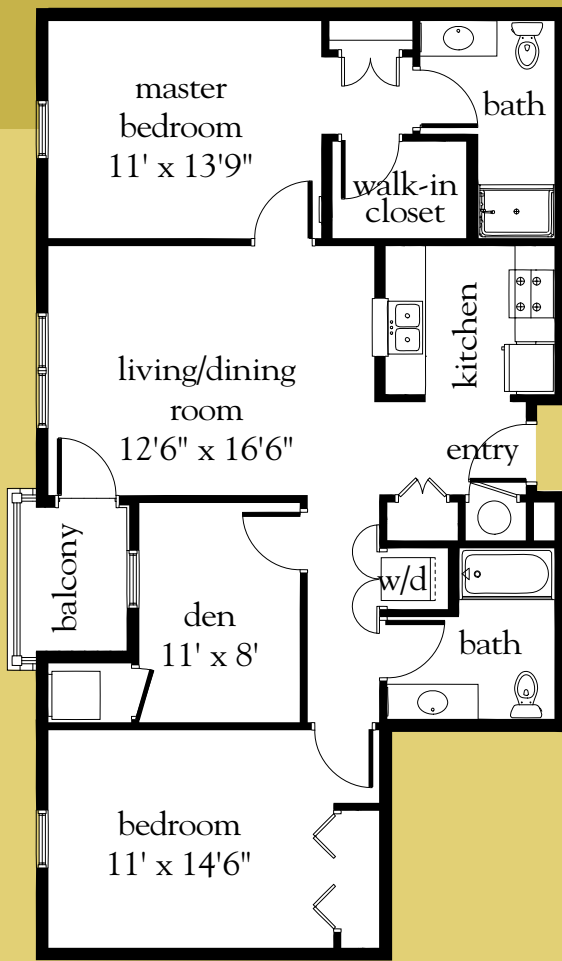
Notes _____

Name _____

Date _____

Expires _____





The Forsythia

1,100-1,300 sq. ft.

Apartment No. _____

Apartment Rate _____

Notes _____

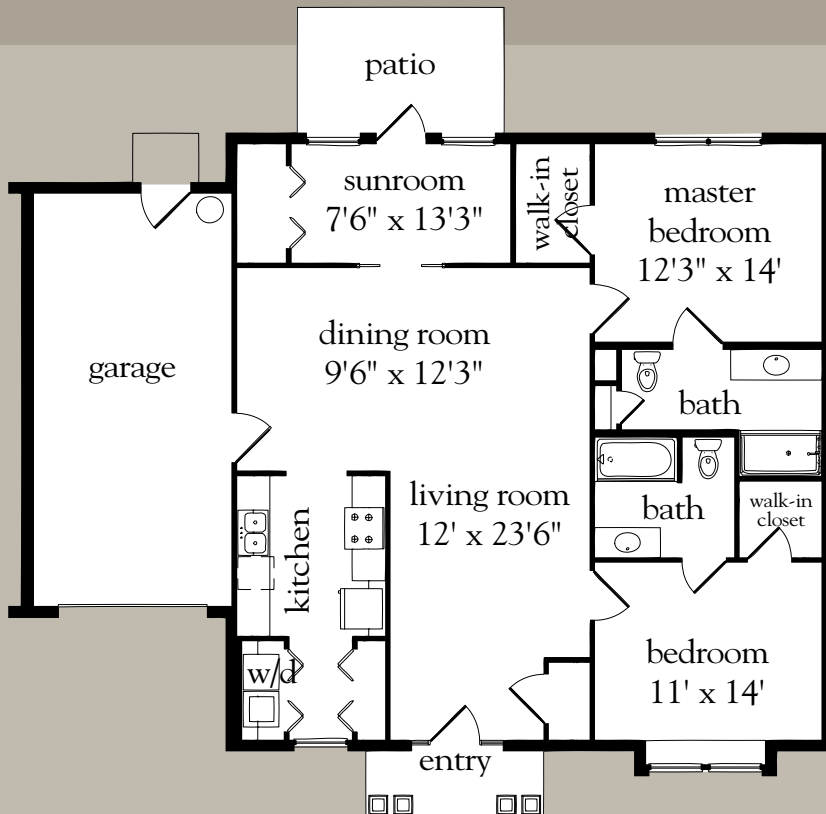
Name _____

Date _____

Expires _____

8

Two-Bedroom Deluxe Floor Plan



The Villa

1,350-1,370 sq. ft.

Apartment No. _____

Apartment Rate _____

Notes _____

Name _____

Date _____

Expires _____

9

Independent Living Floor Plan

Atria SENIOR LIVING