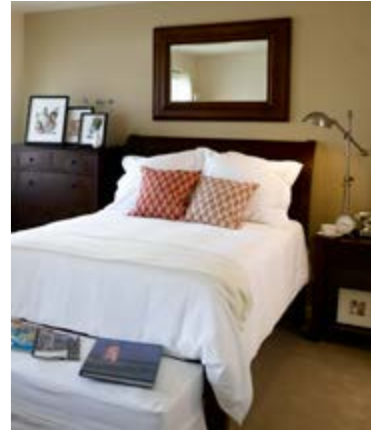
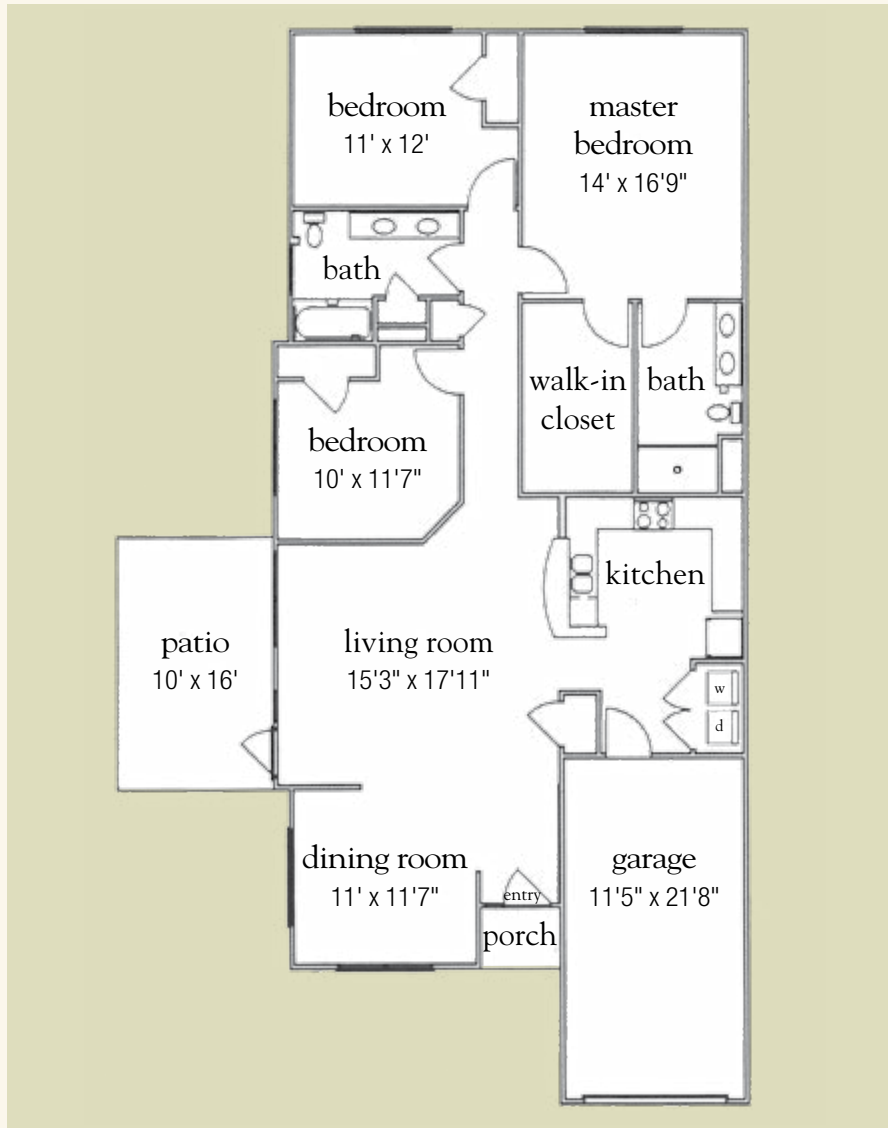


# Orchid Cottage

1,593 sq. ft.



Three-Bedroom Cottage Floor Plan

Date \_\_\_\_\_ Name \_\_\_\_\_

Apartment No. \_\_\_\_\_ Apartment Rate \_\_\_\_\_ Expires \_\_\_\_\_

Notes \_\_\_\_\_

\_\_\_\_\_  
 \_\_\_\_\_

*Atria* SOUTHPOINT WALK

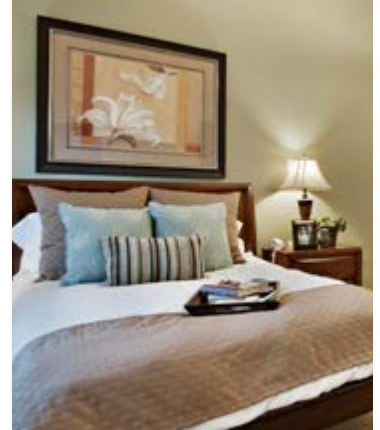
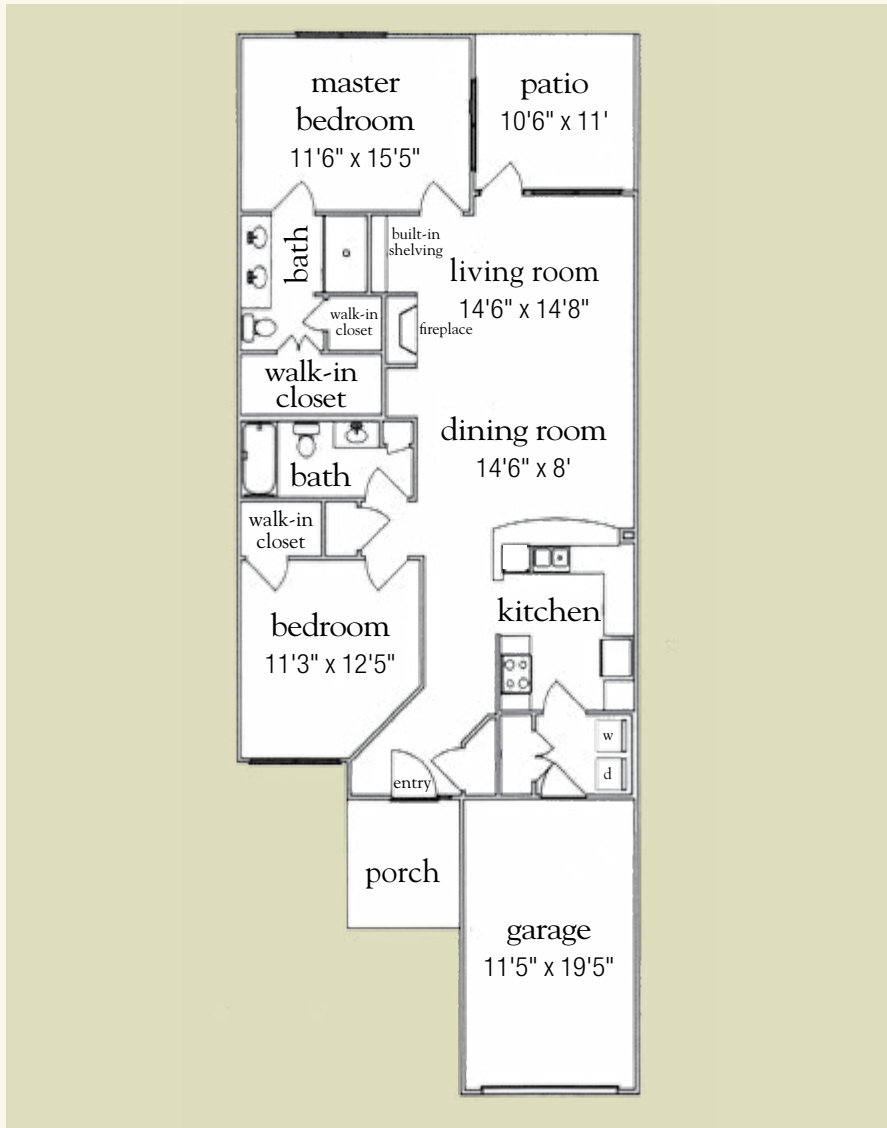
919.401.0100 | AtriaSouthpointWalk.com

Measurements are an approximation and can vary by apartment.

HAL-032-131

# Azalea Cottage

1,359 sq. ft.



Two-Bedroom Cottage Floor Plan

Date \_\_\_\_\_ Name \_\_\_\_\_

Apartment No. \_\_\_\_\_ Apartment Rate \_\_\_\_\_ Expires \_\_\_\_\_

Notes \_\_\_\_\_

\_\_\_\_\_  
 \_\_\_\_\_

*Atria* SOUTHPOINT WALK

919.401.0100 | AtriaSouthpointWalk.com

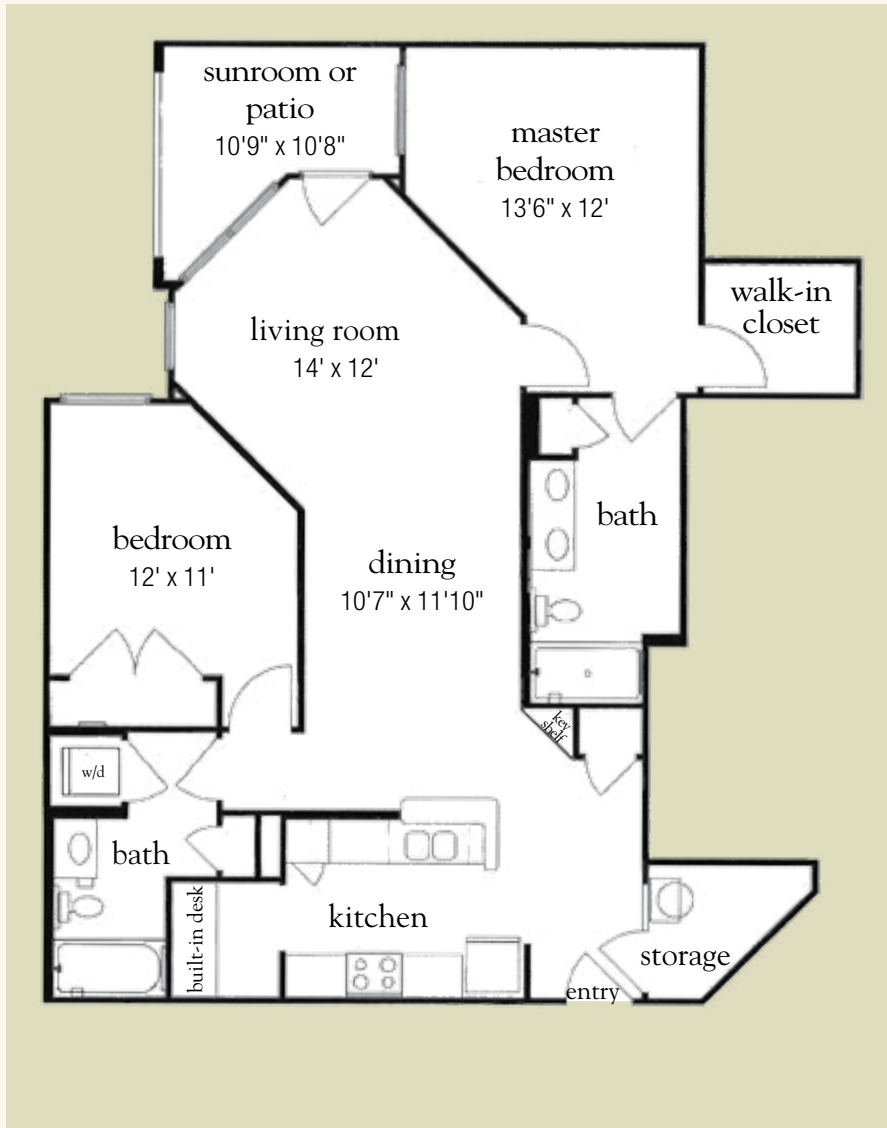
Measurements are an approximation and can vary by apartment.

HAL-032-131

183176

# Hibiscus

1,207 sq. ft.



Two-Bedroom Corner Floor Plan

Date \_\_\_\_\_ Name \_\_\_\_\_

Apartment No. \_\_\_\_\_ Apartment Rate \_\_\_\_\_ Expires \_\_\_\_\_

Notes \_\_\_\_\_

\_\_\_\_\_  
 \_\_\_\_\_

*Atria* SOUTHPOINT WALK

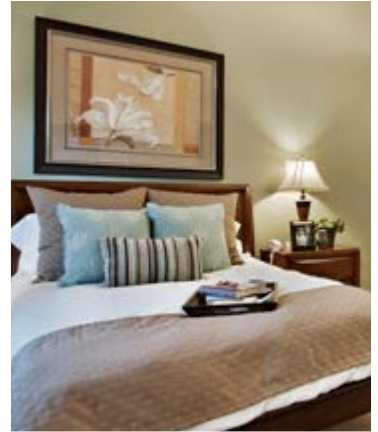
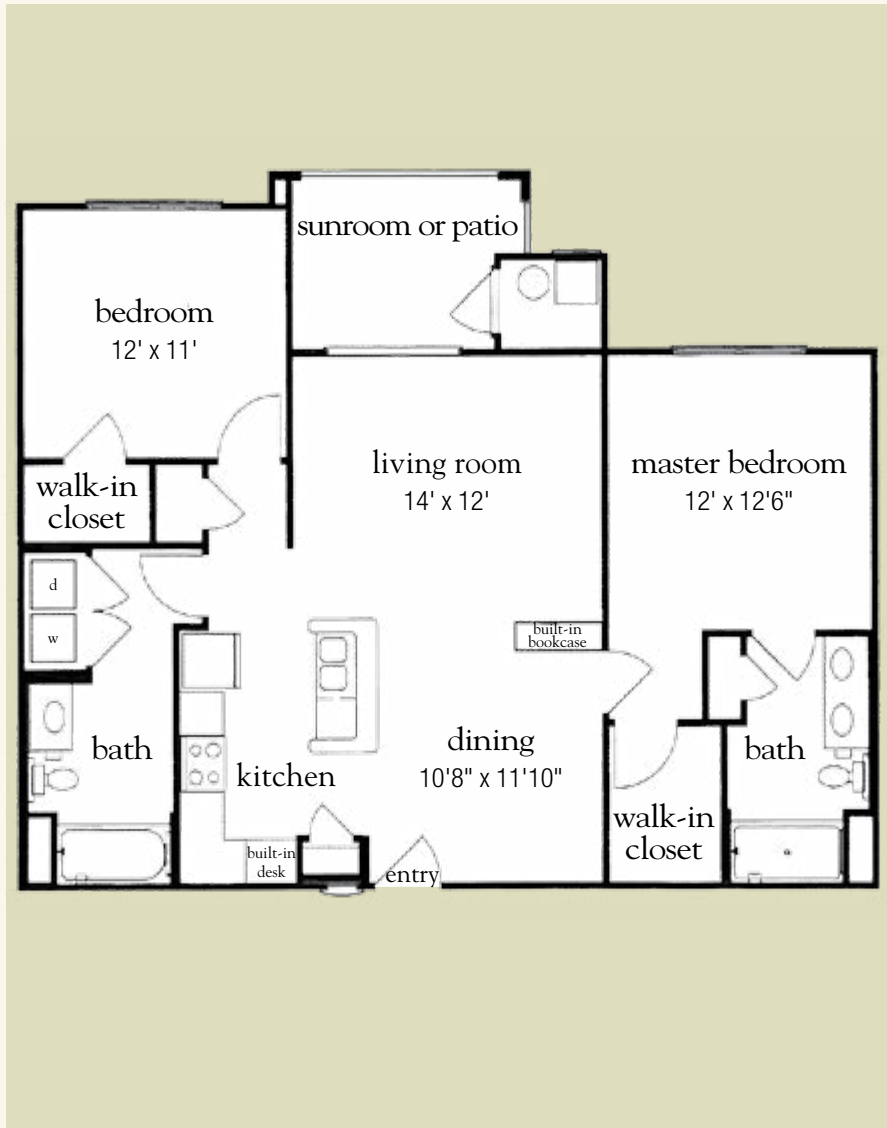
919.401.0100 | AtriaSouthpointWalk.com

Measurements are an approximation and can vary by apartment.

HAL-032-131

# Jasmine and Daffodil

1,044-1,149 sq. ft.



Two-Bedroom Floor Plan

Date \_\_\_\_\_ Name \_\_\_\_\_

Apartment No. \_\_\_\_\_ Apartment Rate \_\_\_\_\_ Expires \_\_\_\_\_

Notes \_\_\_\_\_

\_\_\_\_\_  
\_\_\_\_\_

*Atria* SOUTHPOINT WALK

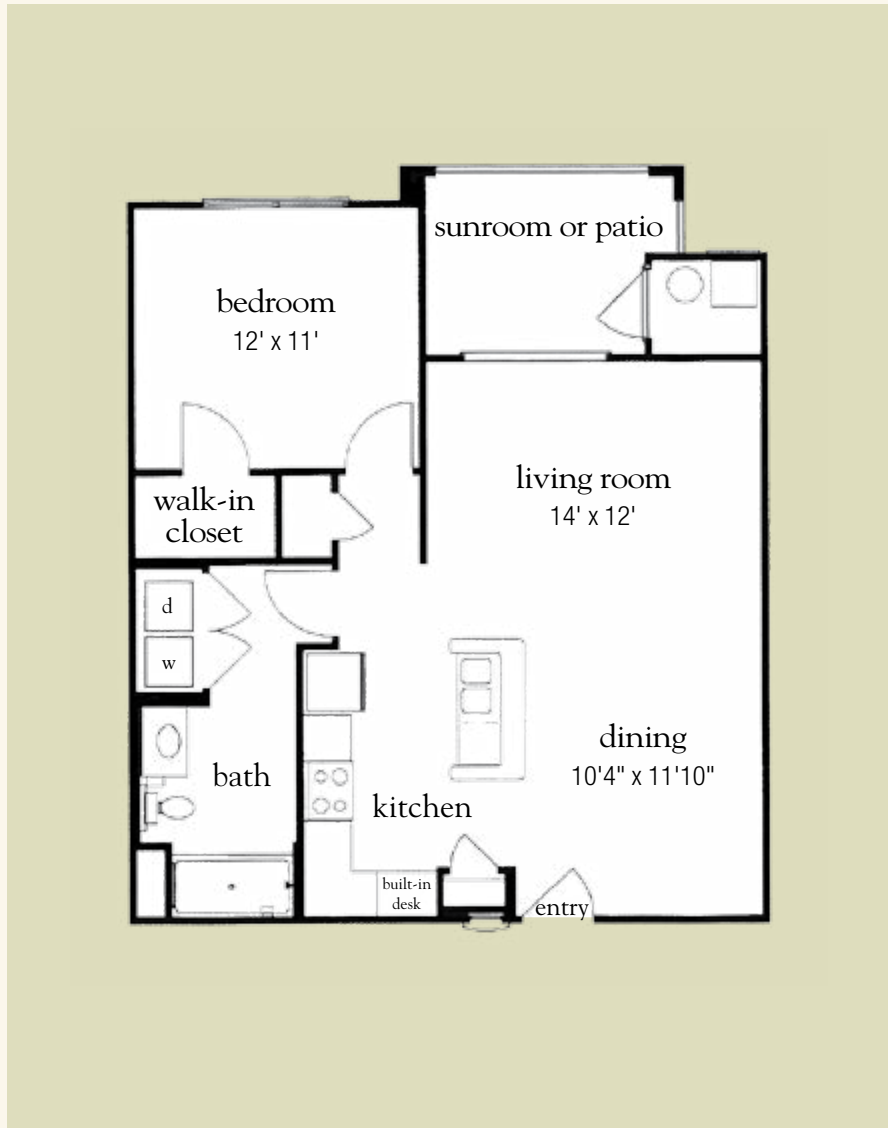
919.401.0100 | [AtriaSouthpointWalk.com](http://AtriaSouthpointWalk.com)

Measurements are an approximation and can vary by apartment.

HAL-032-131

# Rose and Lily

743-847 sq. ft.



One-Bedroom Floor Plan

Date \_\_\_\_\_ Name \_\_\_\_\_

Apartment No. \_\_\_\_\_ Apartment Rate \_\_\_\_\_ Expires \_\_\_\_\_

Notes \_\_\_\_\_

\_\_\_\_\_  
\_\_\_\_\_

*Atria* SOUTHPOINT WALK

919.401.0100 | [AtriaSouthpointWalk.com](http://AtriaSouthpointWalk.com)

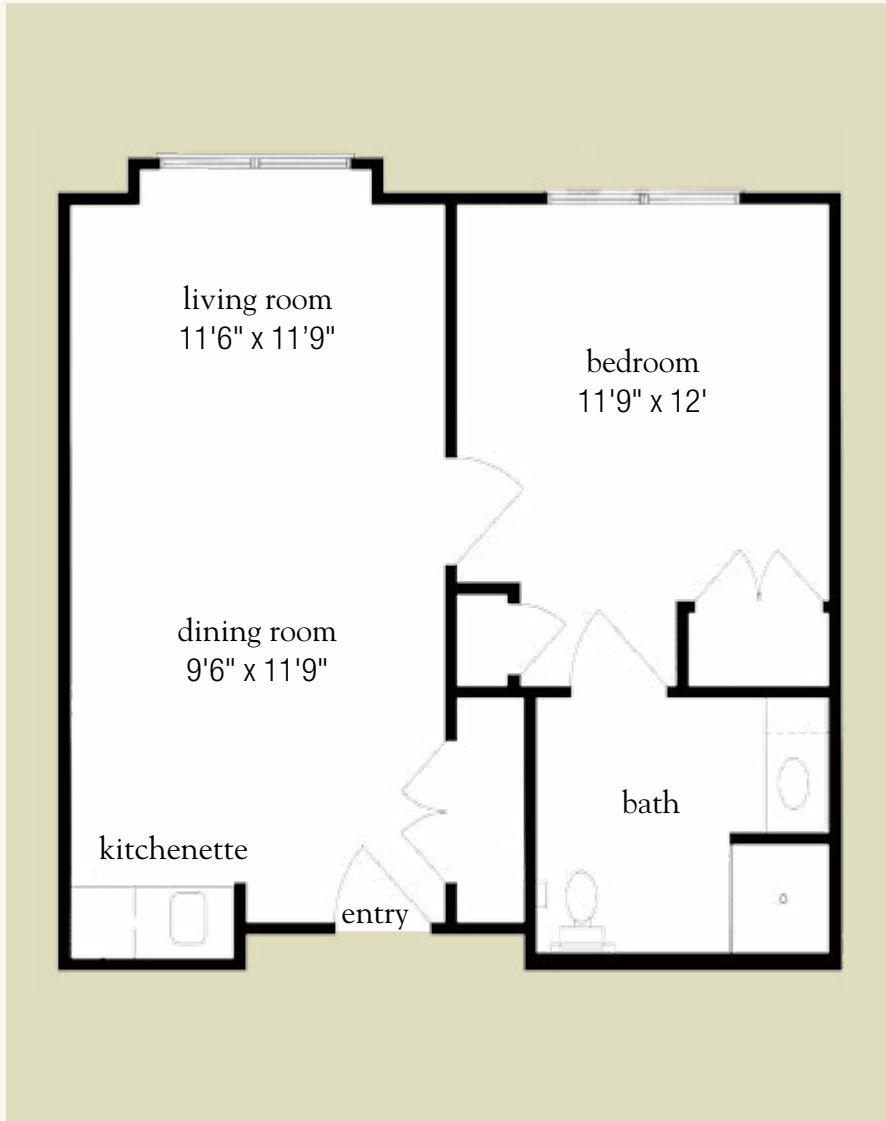
Measurements are an approximation and can vary by apartment.

HAL-032-131

183176

# Assisted Living One Bedroom

526 sq. ft.



Assisted Living One-Bedroom Floor Plan

Date \_\_\_\_\_ Name \_\_\_\_\_

Apartment No. \_\_\_\_\_ Apartment Rate \_\_\_\_\_ Expires \_\_\_\_\_

Notes \_\_\_\_\_

\_\_\_\_\_  
\_\_\_\_\_

*Atria* SOUTHPOINT WALK

919.401.0100 | [AtriaSouthpointWalk.com](http://AtriaSouthpointWalk.com)

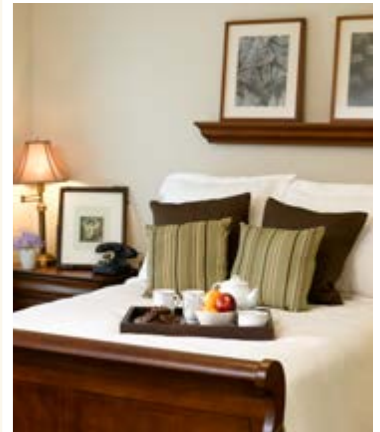
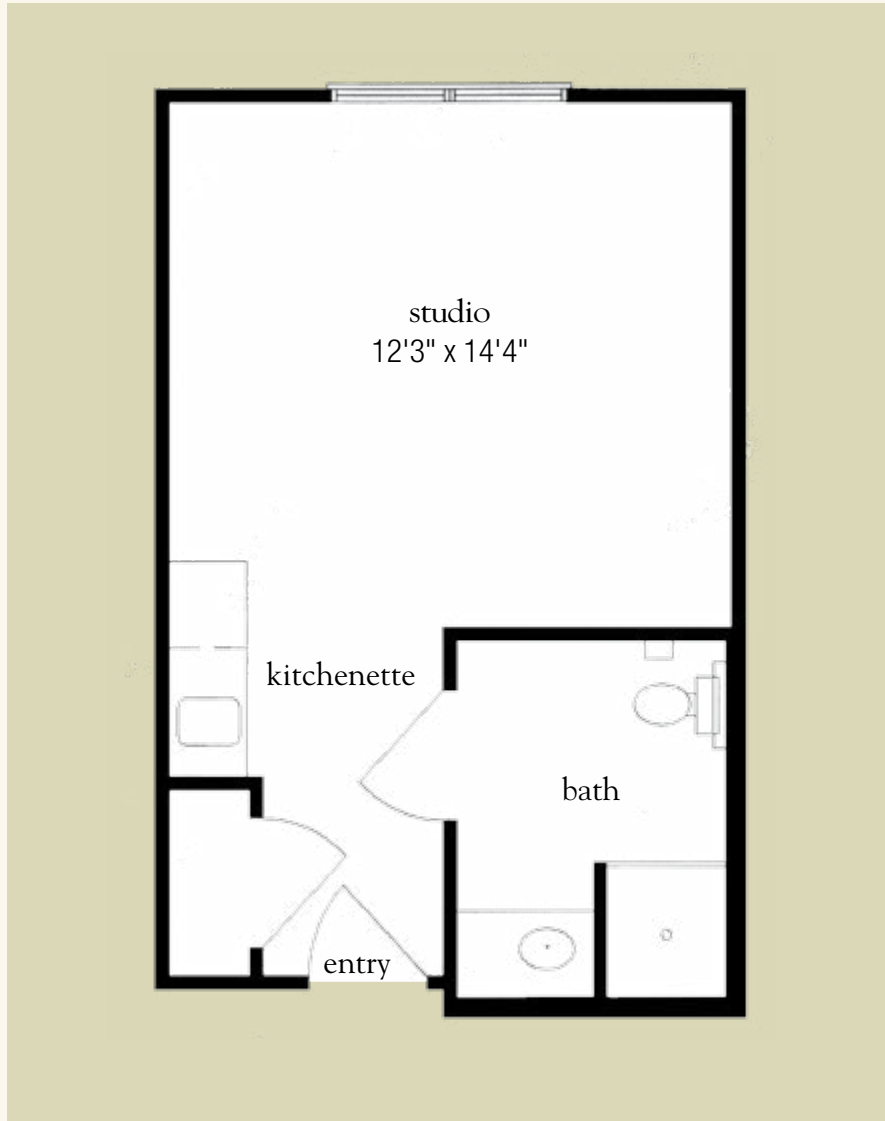
Measurements are an approximation and can vary by apartment.

HAL-032-131

183176

# Assisted Living Studio

318 sq. ft.



Assisted Living Studio Floor Plan

Date \_\_\_\_\_ Name \_\_\_\_\_

Apartment No. \_\_\_\_\_ Apartment Rate \_\_\_\_\_ Expires \_\_\_\_\_

Notes \_\_\_\_\_

\_\_\_\_\_  
\_\_\_\_\_

*Atria* SOUTHPOINT WALK

919.401.0100 | [AtriaSouthpointWalk.com](http://AtriaSouthpointWalk.com)

Measurements are an approximation and can vary by apartment.

HAL-032-131

183176