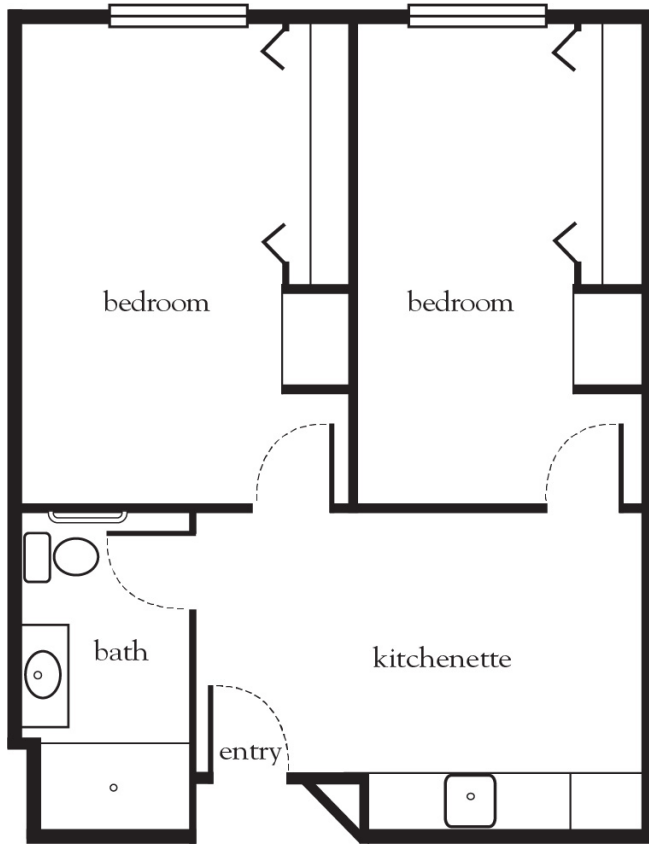


Friendship Suite

Floor Plan



Apartment No. _____ Square Footage _____ Apartment Rate _____

Notes _____

Date Quoted _____ Quoted by _____ Rate Expires _____

RANCHO MIRAGE TERRACE

An Atria Senior Living Community

(760) 770-7737 | RanchoMirageTerrace.com

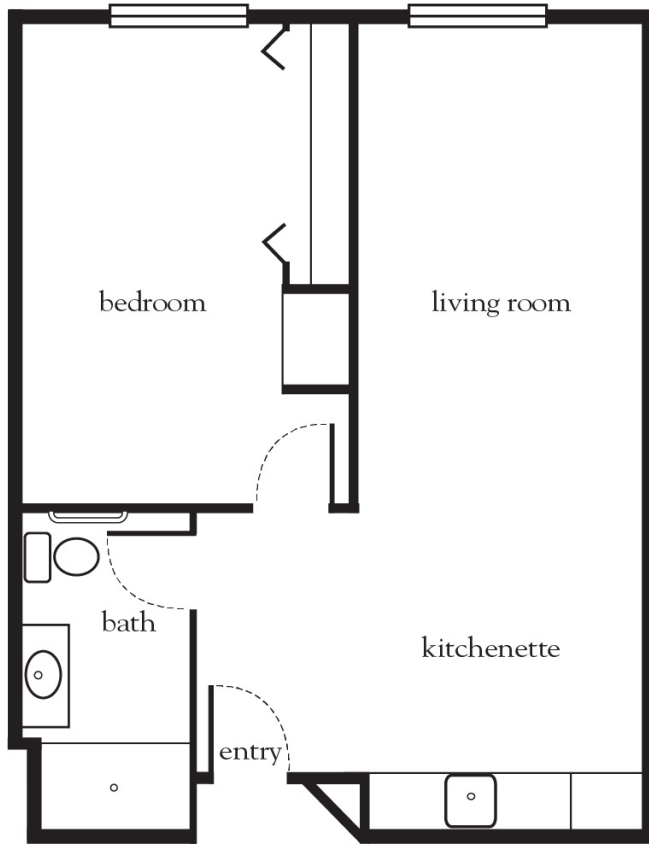
Measurements are an approximation and can vary by apartment.
All rates are subject to change.

Rental Rate includes:

- 24-hour staff
- Three chef-prepared meals per day
- Daily educational, social, cultural and fitness opportunities
- Housekeeping and linen services
- Scheduled bus transportation
- Utilities
- Wi-Fi in all common areas
- Apartment maintenance
- Concierge service
- Individual thermostat control

One Bedroom

Floor Plan



Apartment No. _____ Square Footage _____ Apartment Rate _____

Notes _____

Date Quoted _____ Quoted by _____ Rate Expires _____

RANCHO MIRAGE TERRACE

An Atria Senior Living Community

(760) 770-7737 | RanchoMirageTerrace.com

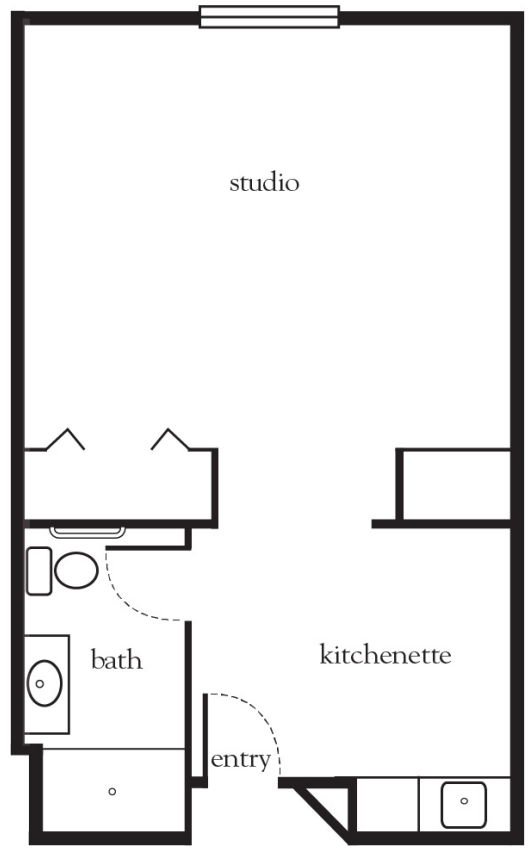
Measurements are an approximation and can vary by apartment.
All rates are subject to change.

Rental Rate includes:

- 24-hour staff
- Three chef-prepared meals per day
- Daily educational, social, cultural and fitness opportunities
- Housekeeping and linen services
- Scheduled bus transportation
- Utilities
- Wi-Fi in all common areas
- Apartment maintenance
- Concierge service
- Individual thermostat control

Studio

Floor Plan



Apartment No. _____ Square Footage _____ Apartment Rate _____

Notes _____

Date Quoted _____ Quoted by _____ Rate Expires _____

RANCHO MIRAGE TERRACE
 An Atria Senior Living Community
 (760) 770-7737 | RanchoMirageTerrace.com

Rental Rate includes:

- 24-hour staff
- Three chef-prepared meals per day
- Daily educational, social, cultural and fitness opportunities
- Housekeeping and linen services
- Scheduled bus transportation
- Utilities
- Wi-Fi in all common areas
- Apartment maintenance
- Concierge service
- Individual thermostat control

Measurements are an approximation and can vary by apartment. All rates are subject to change.