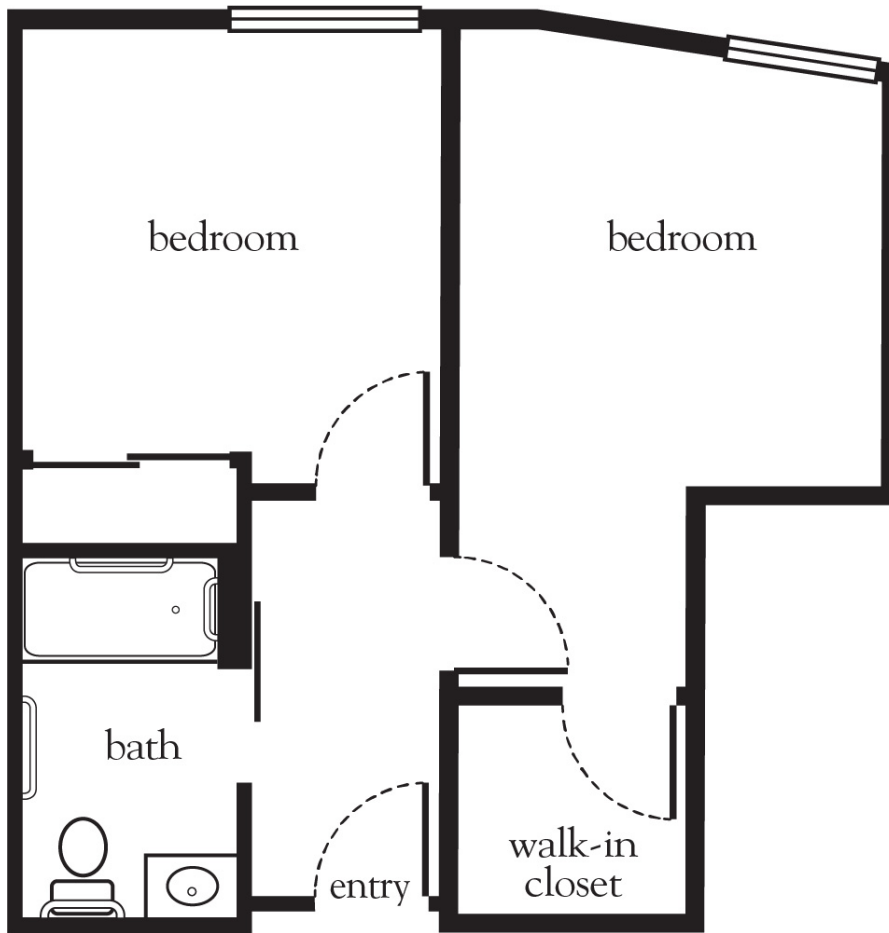


Shared Suite



Apartment No. _____ Square Footage _____ Apartment Rate _____

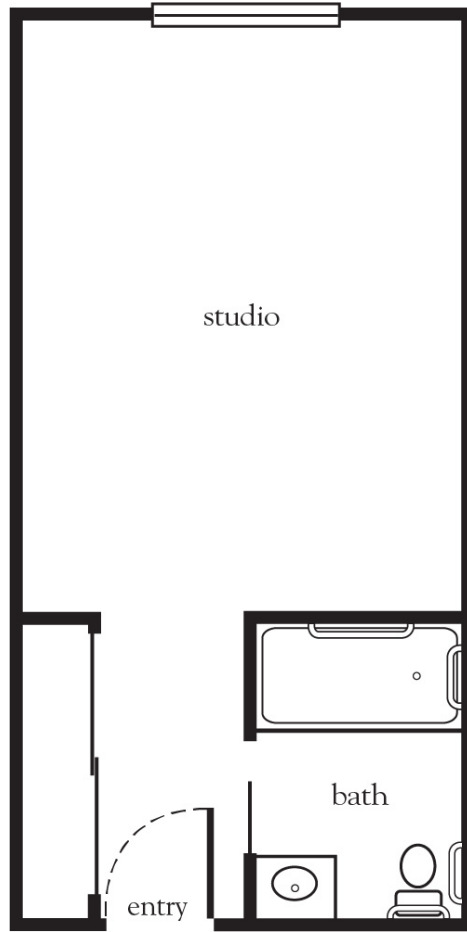
Notes _____

ENCINO TERRACE SENIOR LIVING

(818) 986-8466 | EncinoTerraceSeniorLiving.com

Measurements are an approximation and can vary by apartment.
All rates are subject to change.

Studio A



Apartment No. _____ Square Footage _____ Apartment Rate _____

Notes _____

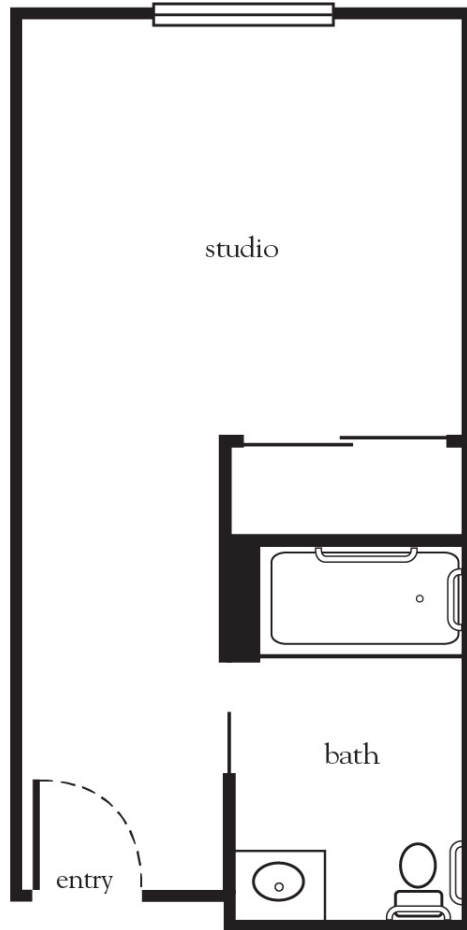
ENCINO TERRACE SENIOR LIVING

(818) 986-8466 | EncinoTerraceSeniorLiving.com

Measurements are an approximation and can vary by apartment.
All rates are subject to change.

License #197609496 Managed by Atria Management Company, LLC

Studio B



Apartment No. _____ Square Footage _____ Apartment Rate _____

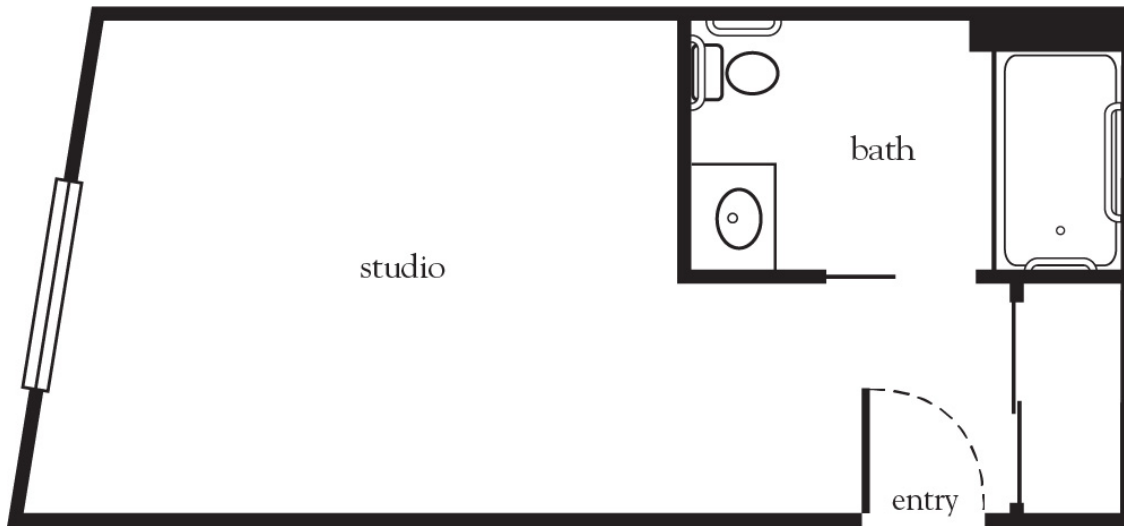
Notes _____

ENCINO TERRACE SENIOR LIVING

(818) 986-8466 | EncinoTerraceSeniorLiving.com

Measurements are an approximation and can vary by apartment.
All rates are subject to change.

Studio C



Apartment No. _____ Square Footage _____ Apartment Rate _____

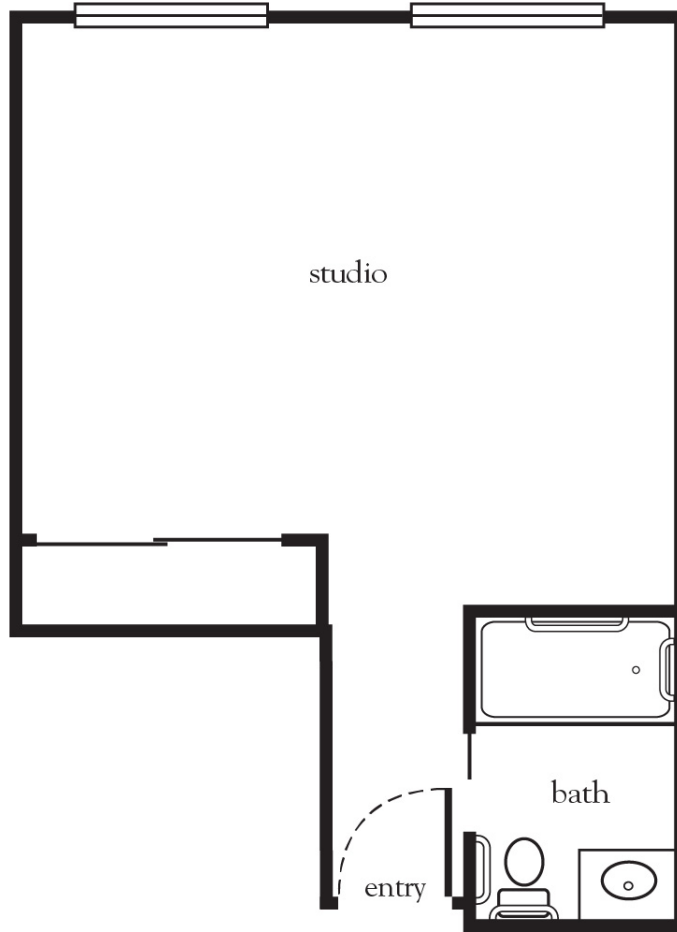
Notes _____

ENCINO TERRACE SENIOR LIVING

(818) 986-8466 | EncinoTerraceSeniorLiving.com

Measurements are an approximation and can vary by apartment.
All rates are subject to change.

Studio D



Apartment No. _____ Square Footage _____ Apartment Rate _____

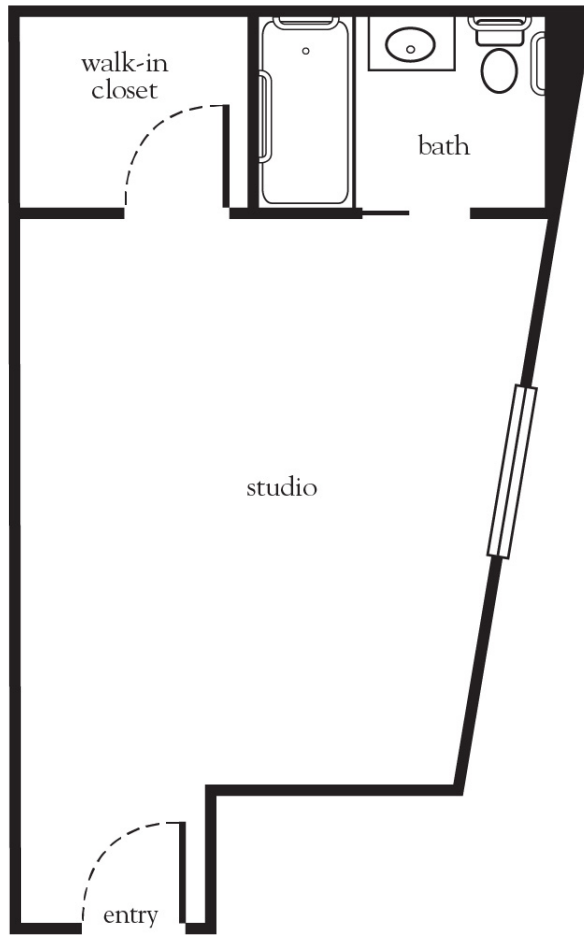
Notes _____

ENCINO TERRACE SENIOR LIVING

(818) 986-8466 | EncinoTerraceSeniorLiving.com

Measurements are an approximation and can vary by apartment.
All rates are subject to change.

Studio E



Apartment No. _____ Square Footage _____ Apartment Rate _____

Notes _____

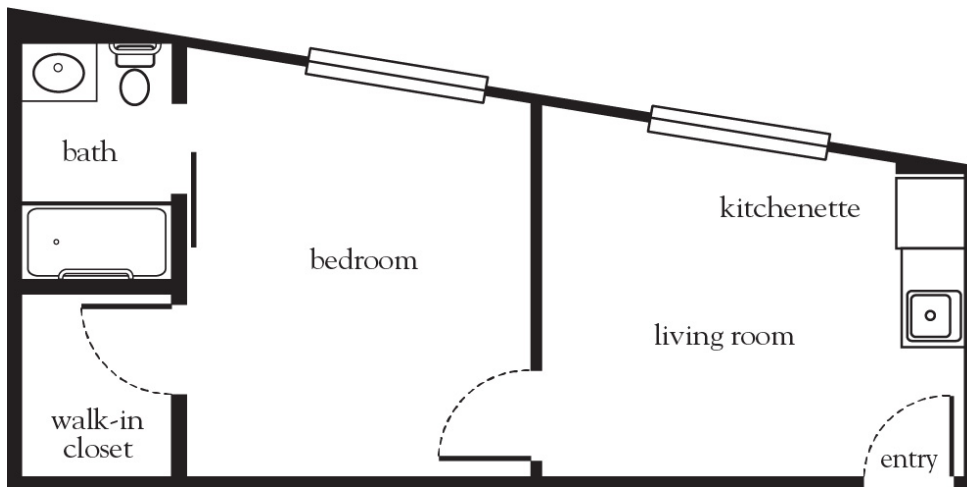
ENCINO TERRACE SENIOR LIVING

(818) 986-8466 | EncinoTerraceSeniorLiving.com

Measurements are an approximation and can vary by apartment.
All rates are subject to change.

One Bedroom

Floor Plan



Apartment No. _____ Square Footage _____ Apartment Rate _____

Notes _____

Date Quoted _____ Quoted by _____ Rate Expires _____

ENCINO TERRACE SENIOR LIVING

(818) 986-8466 | EncinoTerraceSeniorLiving.com

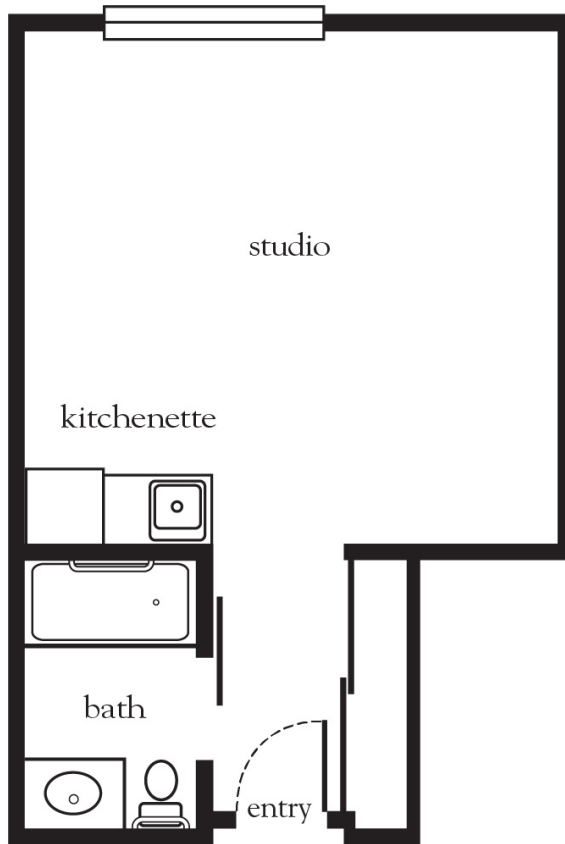
Measurements are an approximation and can vary by apartment.
All rates are subject to change.

Rental Rate includes:

- 24-hour staff
- Three chef-prepared meals per day
- Daily educational, social, cultural and fitness opportunities
- Housekeeping and linen services
- Scheduled van transportation
- Utilities
- Wi-Fi in all common areas
- Apartment maintenance
- Emergency alert system

Studio B

Floor Plan



Apartment No. _____ Square Footage _____ Apartment Rate _____

Notes _____

Date Quoted _____ Quoted by _____ Rate Expires _____

ENCINO TERRACE SENIOR LIVING

(818) 986-8466 | EncinoTerraceSeniorLiving.com

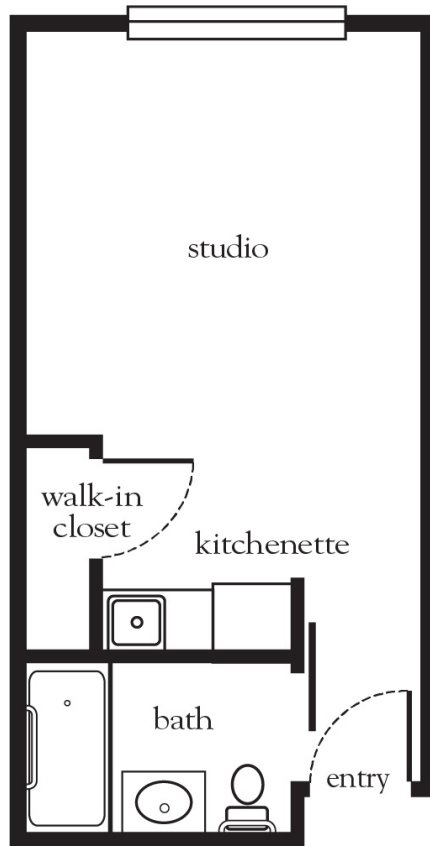
Measurements are an approximation and can vary by apartment.
All rates are subject to change.

Rental Rate includes:

- 24-hour staff
- Three chef-prepared meals per day
- Daily educational, social, cultural and fitness opportunities
- Housekeeping and linen services
- Scheduled van transportation
- Utilities
- Wi-Fi in all common areas
- Apartment maintenance
- Emergency alert system

Studio C

Floor Plan



Apartment No. _____ Square Footage _____ Apartment Rate _____

Notes _____

Date Quoted _____ Quoted by _____ Rate Expires _____

ENCINO TERRACE SENIOR LIVING

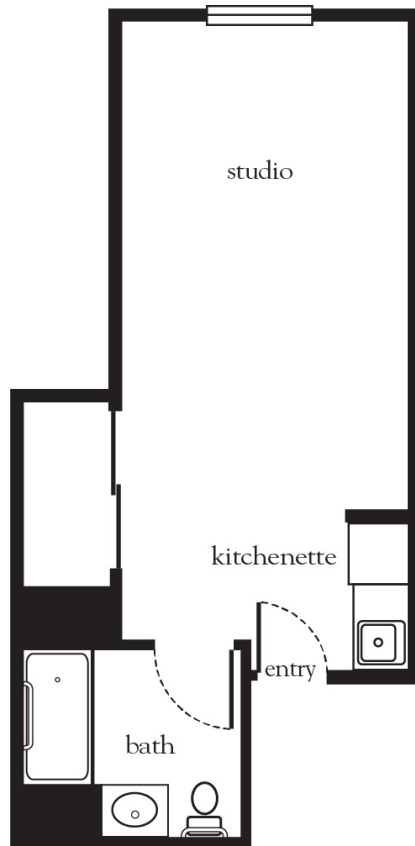
(818) 986-8466 | EncinoTerraceSeniorLiving.com

Rental Rate includes:

- 24-hour staff
- Three chef-prepared meals per day
- Daily educational, social, cultural and fitness opportunities
- Housekeeping and linen services
- Scheduled van transportation
- Utilities
- Wi-Fi in all common areas
- Apartment maintenance
- Emergency alert system

Measurements are an approximation and can vary by apartment.
 All rates are subject to change.

Studio D



Floor Plan

Apartment No. _____ Square Footage _____ Apartment Rate _____

Notes _____

Date Quoted _____ Quoted by _____ Rate Expires _____

ENCINO TERRACE SENIOR LIVING

(818) 986-8466 | EncinoTerraceSeniorLiving.com

Rental Rate includes:

- 24-hour staff
- Three chef-prepared meals per day
- Daily educational, social, cultural and fitness opportunities
- Housekeeping and linen services
- Scheduled van transportation
- Utilities
- Wi-Fi in all common areas
- Apartment maintenance
- Emergency alert system

Measurements are an approximation and can vary by apartment.
All rates are subject to change.

Studio E

Floor Plan



Apartment No. _____ Square Footage _____ Apartment Rate _____

Notes _____

Date Quoted _____ Quoted by _____ Rate Expires _____

ENCINO TERRACE SENIOR LIVING

(818) 986-8466 | EncinoTerraceSeniorLiving.com

Measurements are an approximation and can vary by apartment.
All rates are subject to change.

Rental Rate includes:

- 24-hour staff
- Three chef-prepared meals per day
- Daily educational, social, cultural and fitness opportunities
- Housekeeping and linen services
- Scheduled van transportation
- Utilities
- Wi-Fi in all common areas
- Apartment maintenance
- Emergency alert system