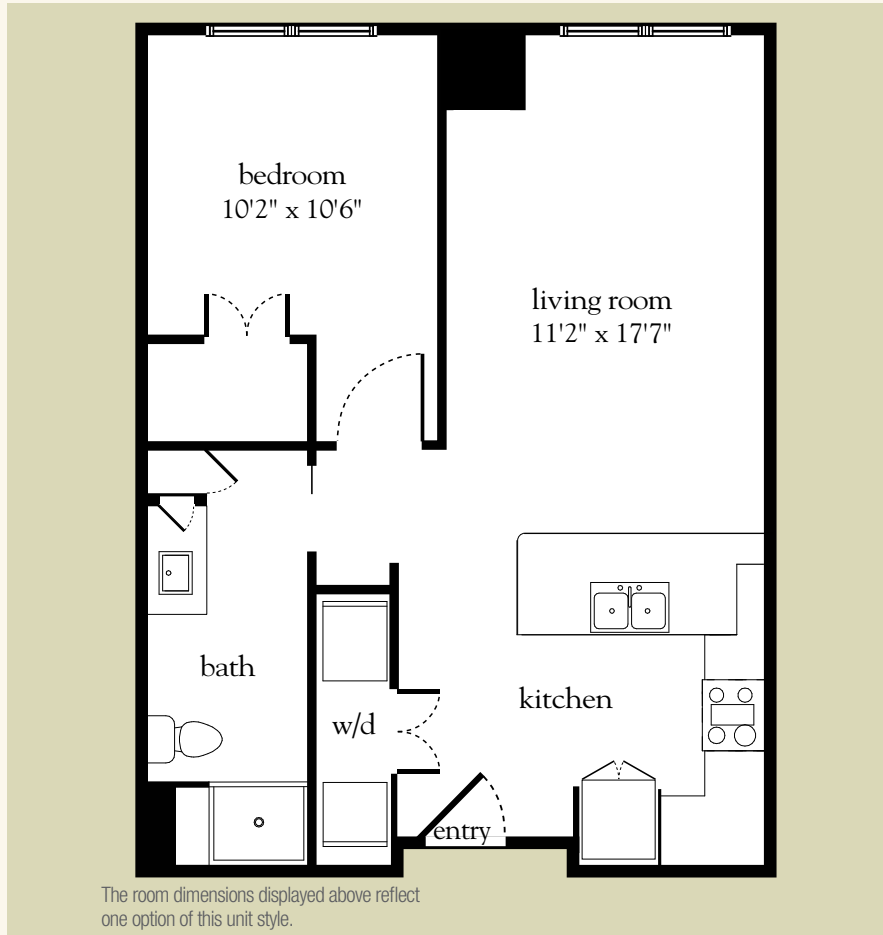


Independent Living One Bedroom

660-1,030 sq. ft.



Independent Living One-Bedroom Floor Plan

Apartment No. _____ Apartment Rate _____

Notes _____

Name _____ Date _____

Expires _____

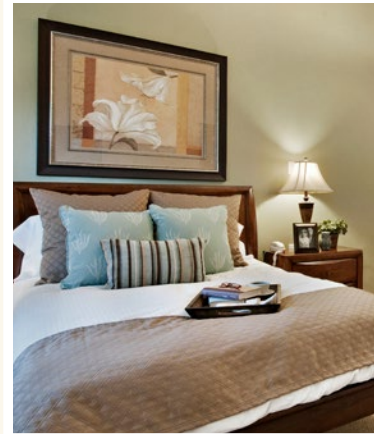
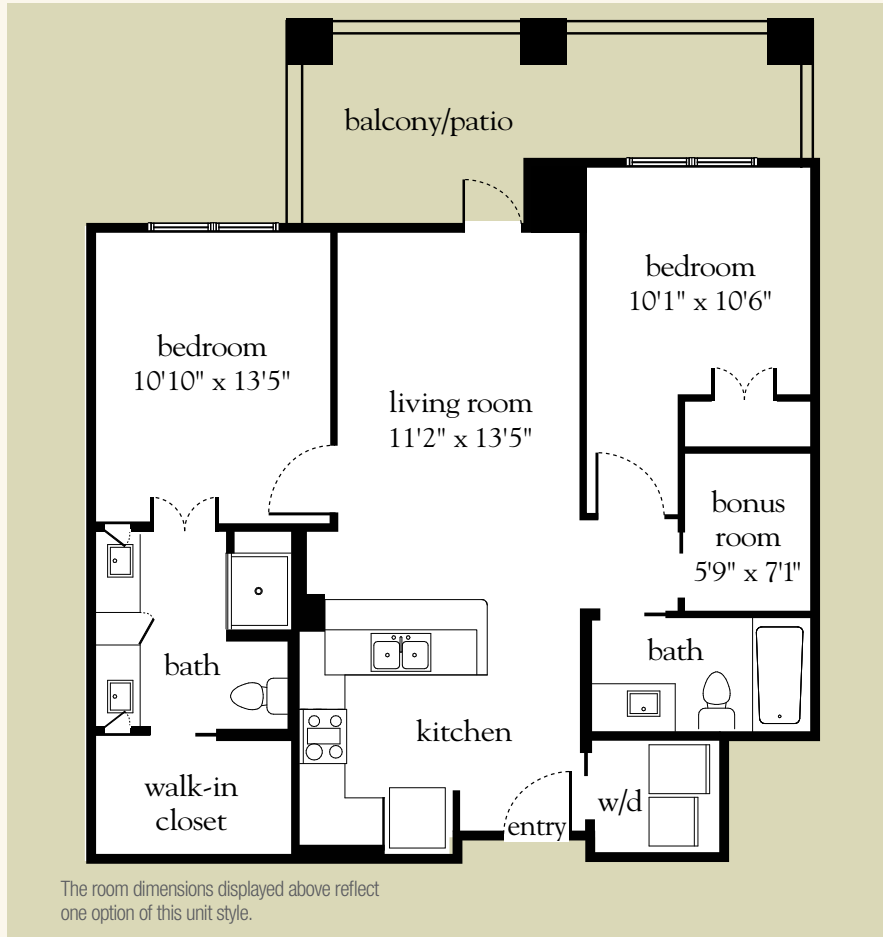
Atria MOUNT PLEASANT

843.800.2323 | AtriaMountPleasant.com

Measurements are an approximation and can vary by apartment. All rates are subject to change.

Independent Living Two Bedroom

985-1,260 sq. ft.



Independent Living Two-Bedroom Floor Plan

Apartment No. _____ Apartment Rate _____

Notes _____

Name _____ Date _____

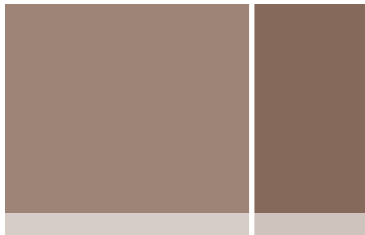
Expires _____

Atria MOUNT PLEASANT

843.800.2323 | AtriaMountPleasant.com

Measurements are an approximation and can vary by apartment. All rates are subject to change.

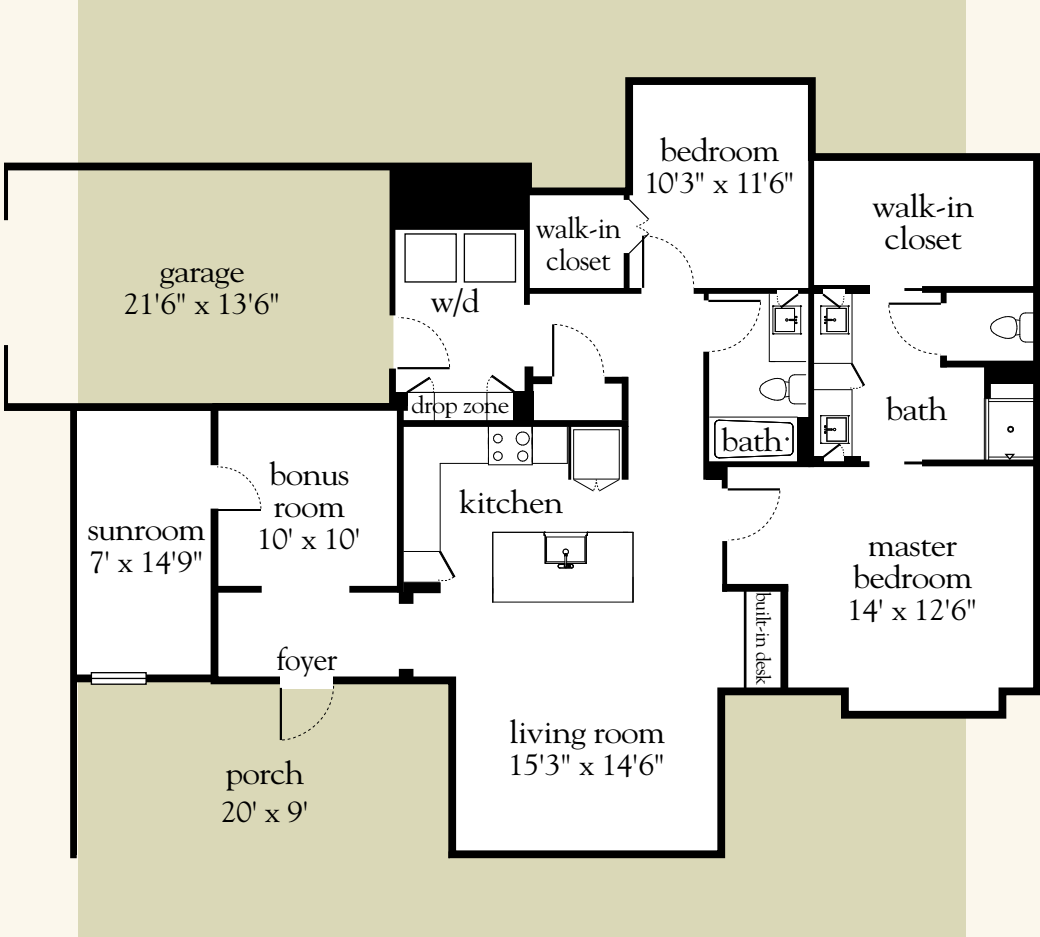
Villa A



1,714 sq. ft.



Villa A Floor Plan



Villa No. _____ Villa Rate _____

Notes _____

Name _____ Date _____

Expires _____

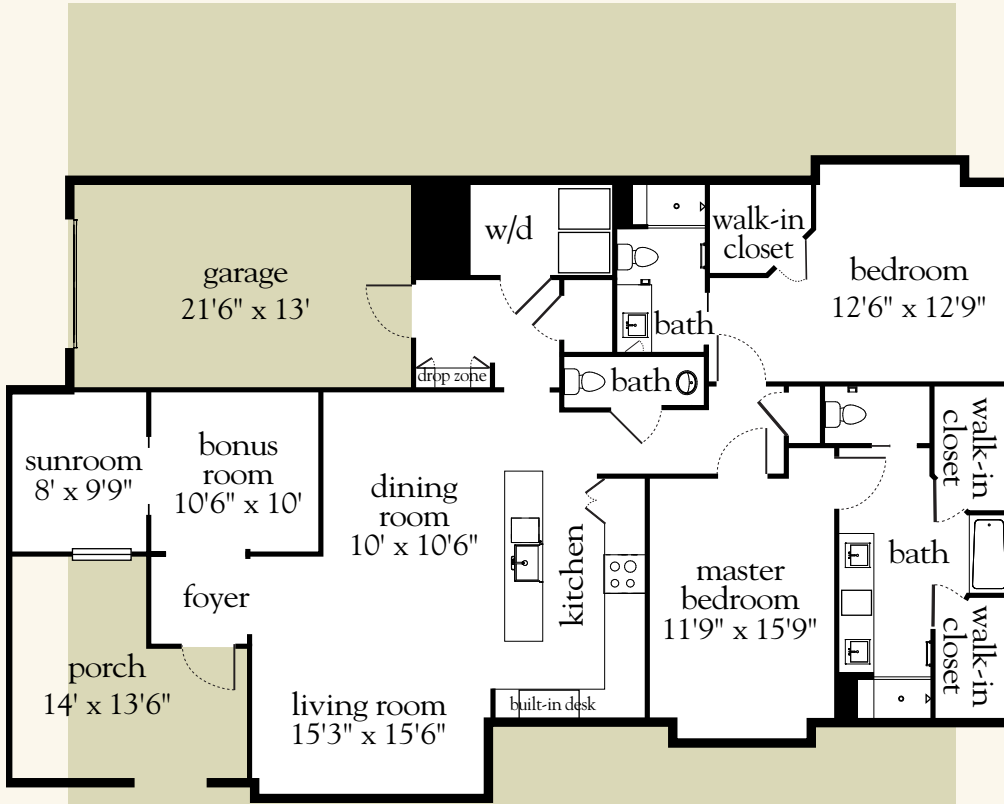
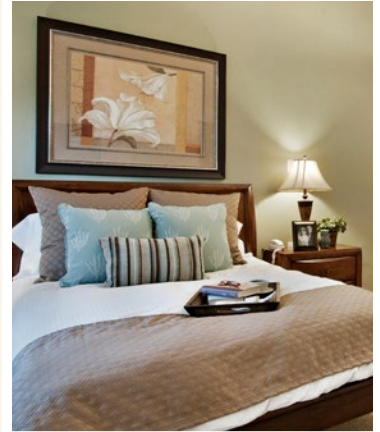
Atria MOUNT PLEASANT

843.800.2323 | AtriaMountPleasant.com

Measurements are an approximation and can vary by villa. All rates are subject to change.

Villa B

1,954-1,988 sq. ft.



The room dimensions displayed above reflect our option of this unit style.

Villa B Floor Plan

Villa No. _____ Villa Rate _____

Notes _____

Name _____ Date _____

Expires _____

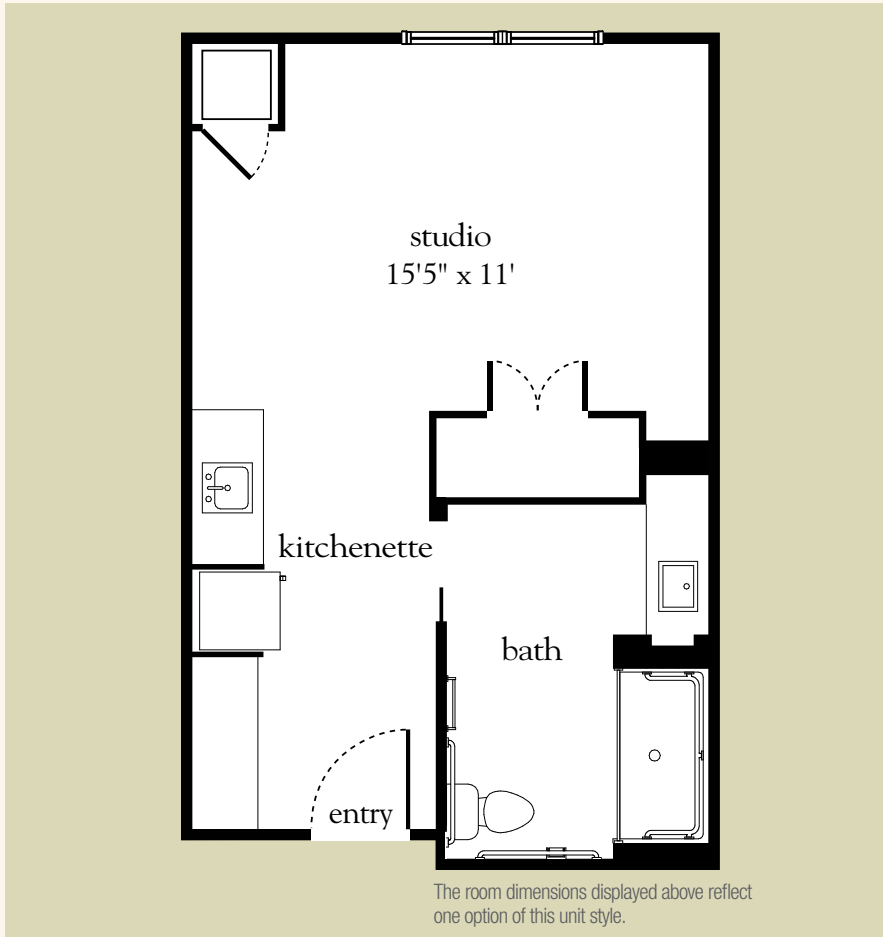
Atria MOUNT PLEASANT

843.800.2323 | AtriaMountPleasant.com

Measurements are an approximation and can vary by villa. All rates are subject to change.

Assisted Living Private Suite

350-420 sq. ft.



Assisted Living Private Suite Floor Plan

Apartment No. _____ Apartment Rate _____

Notes _____

Name _____ Date _____

Expires _____

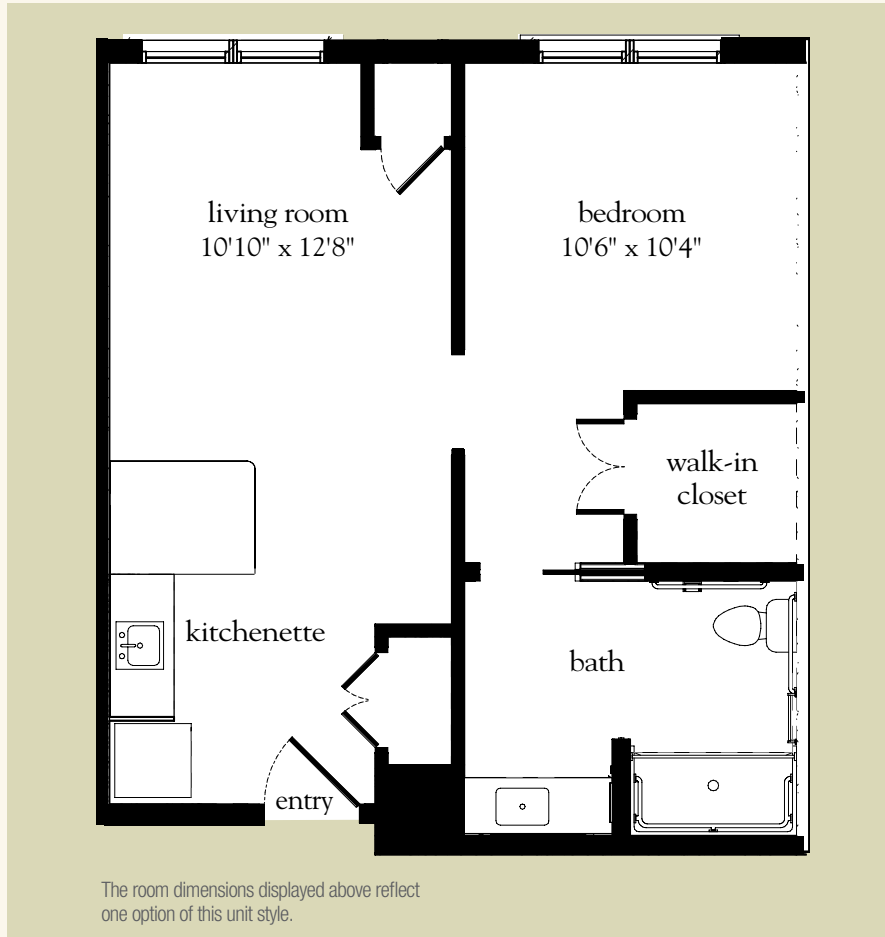
Atria MOUNT PLEASANT

843.800.2323 | AtriaMountPleasant.com

Measurements are an approximation and can vary by apartment. All rates are subject to change.

Assisted Living One Bedroom

510-710 sq. ft.



Assisted Living One-Bedroom Floor Plan

Apartment No. _____ Apartment Rate _____

Notes _____

Name _____ Date _____

Expires _____

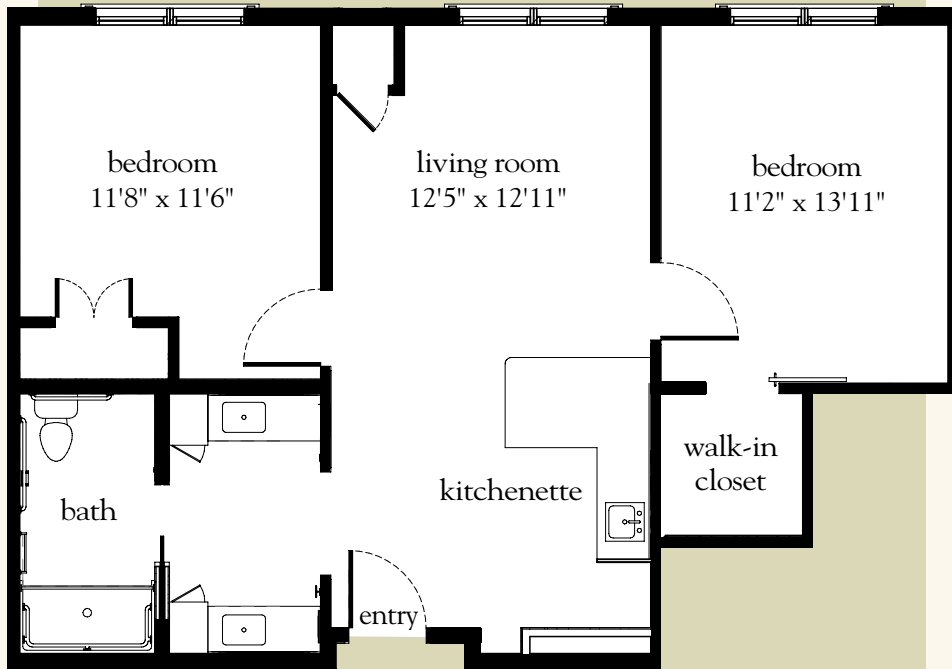
Atria MOUNT PLEASANT

843.800.2323 | AtriaMountPleasant.com

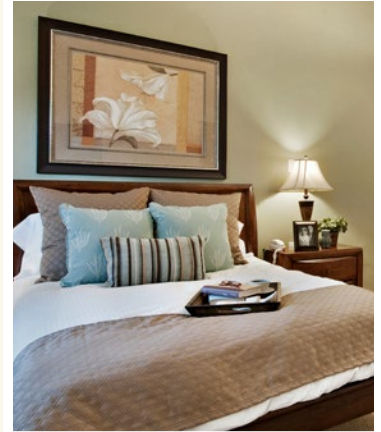
Measurements are an approximation and can vary by apartment. All rates are subject to change.

Assisted Living Two Bedroom

795-820 sq. ft.



The room dimensions displayed above reflect one option of this unit style.



Assisted Living Two-Bedroom Floor Plan

Apartment No. _____ Apartment Rate _____

Notes _____

Name _____ Date _____

Expires _____

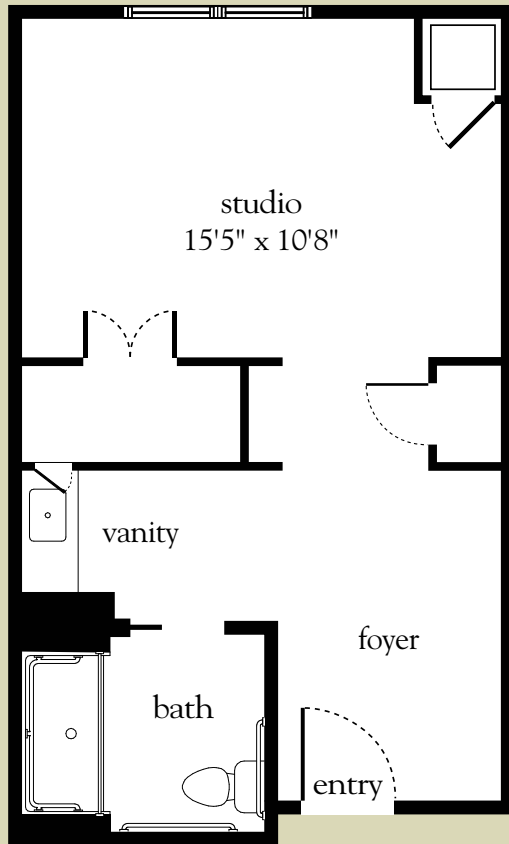
Atria MOUNT PLEASANT

843.800.2323 | AtriaMountPleasant.com

Measurements are an approximation and can vary by apartment. All rates are subject to change.

Life Guidance® Memory Care Private Suite

350-510 sq. ft.



The room dimensions displayed above reflect one option of this unit style.



Memory Care Private Suite Floor Plan

Date _____ Name _____

Apartment No. _____ Apartment Rate _____ Expires _____

Notes _____

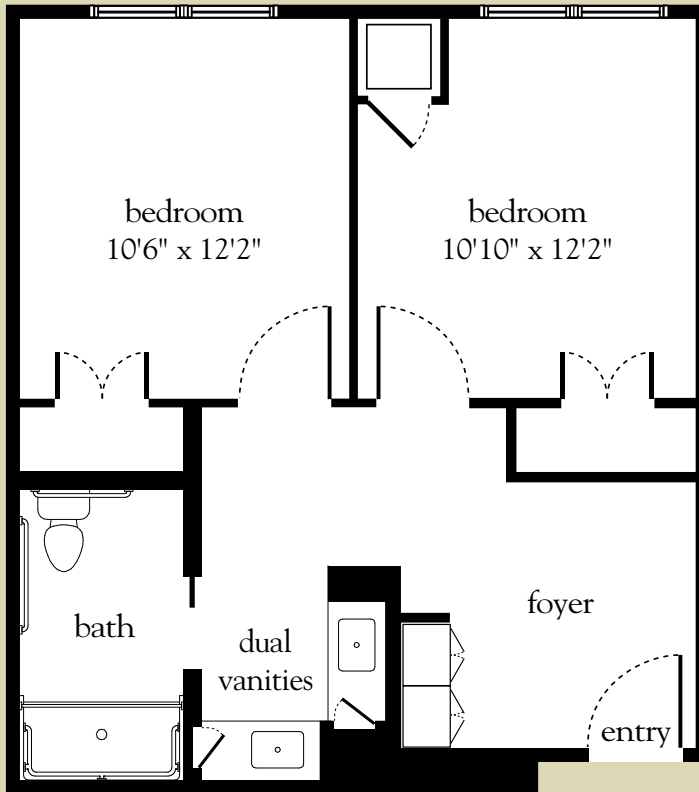
Atria MOUNT PLEASANT

843.800.2323 | AtriaMountPleasant.com

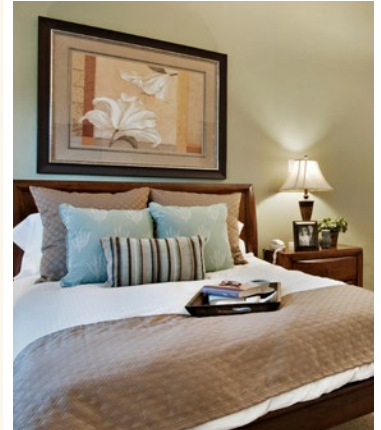
Measurements are an approximation and can vary by apartment.

Life Guidance® Memory Care Shared Suite

525-790 sq. ft.



The room dimensions displayed above reflect one option of this unit style.



Memory Care Shared Suite Floor Plan

Date _____ Name _____

Apartment No. _____ Apartment Rate _____ Expires _____

Notes _____

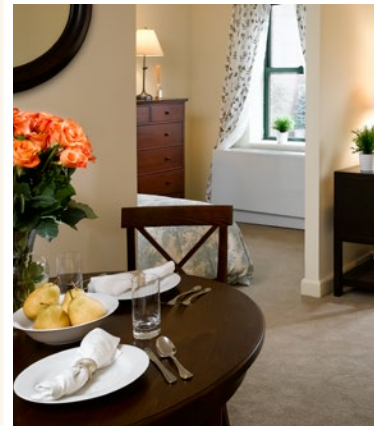
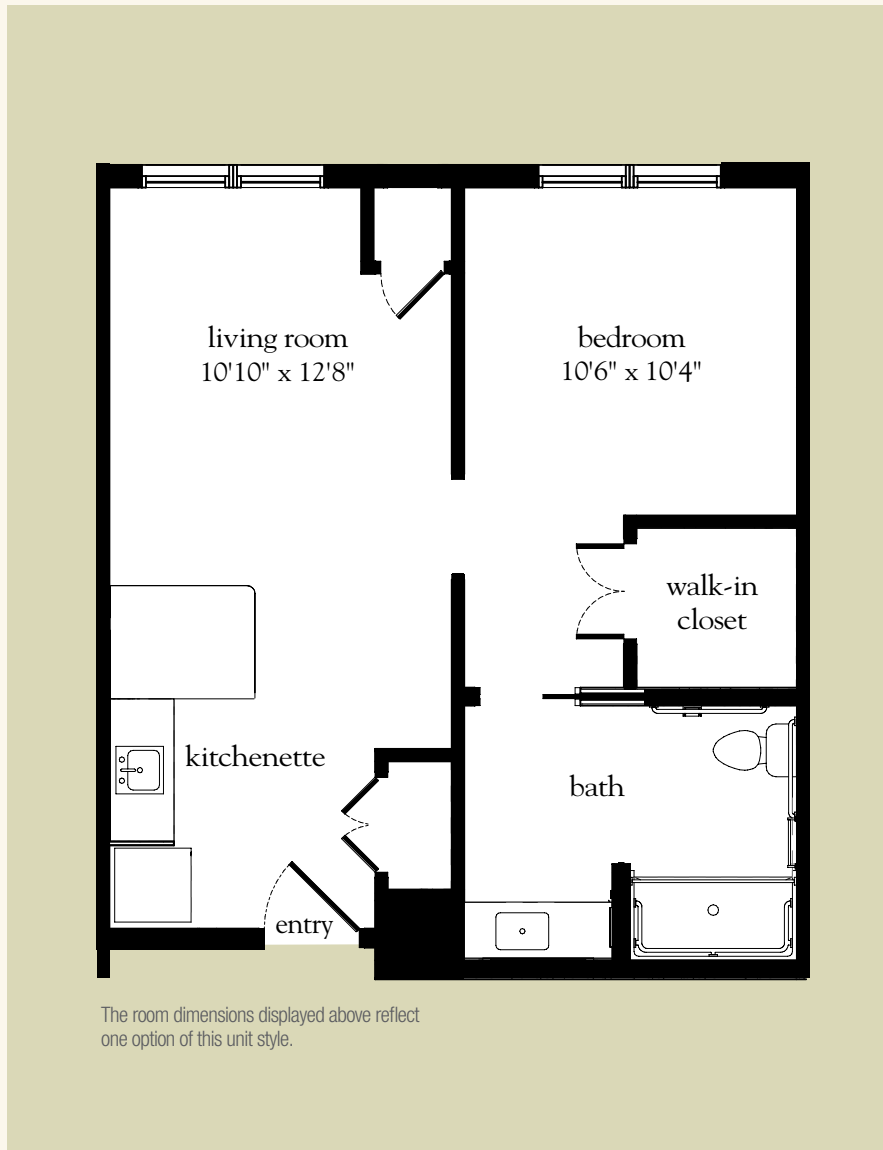
Atria MOUNT PLEASANT

843.800.2323 | AtriaMountPleasant.com

Measurements are an approximation and can vary by apartment.

Life Guidance[®] Memory Care One-Bedroom

526-553 sq. ft.



Memory Care One-Bedroom Floor Plan

Date _____ Name _____

Apartment No. _____ Apartment Rate _____ Expires _____

Notes _____

Atria MOUNT PLEASANT

843.800.2323 | AtriaMountPleasant.com

Measurements are an approximation and can vary by apartment.