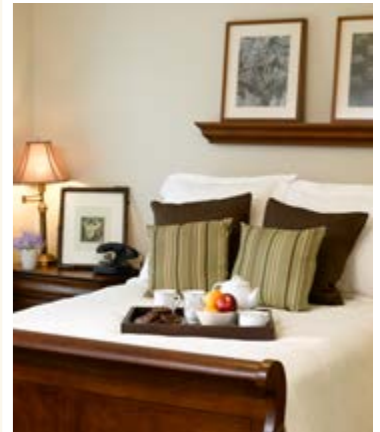
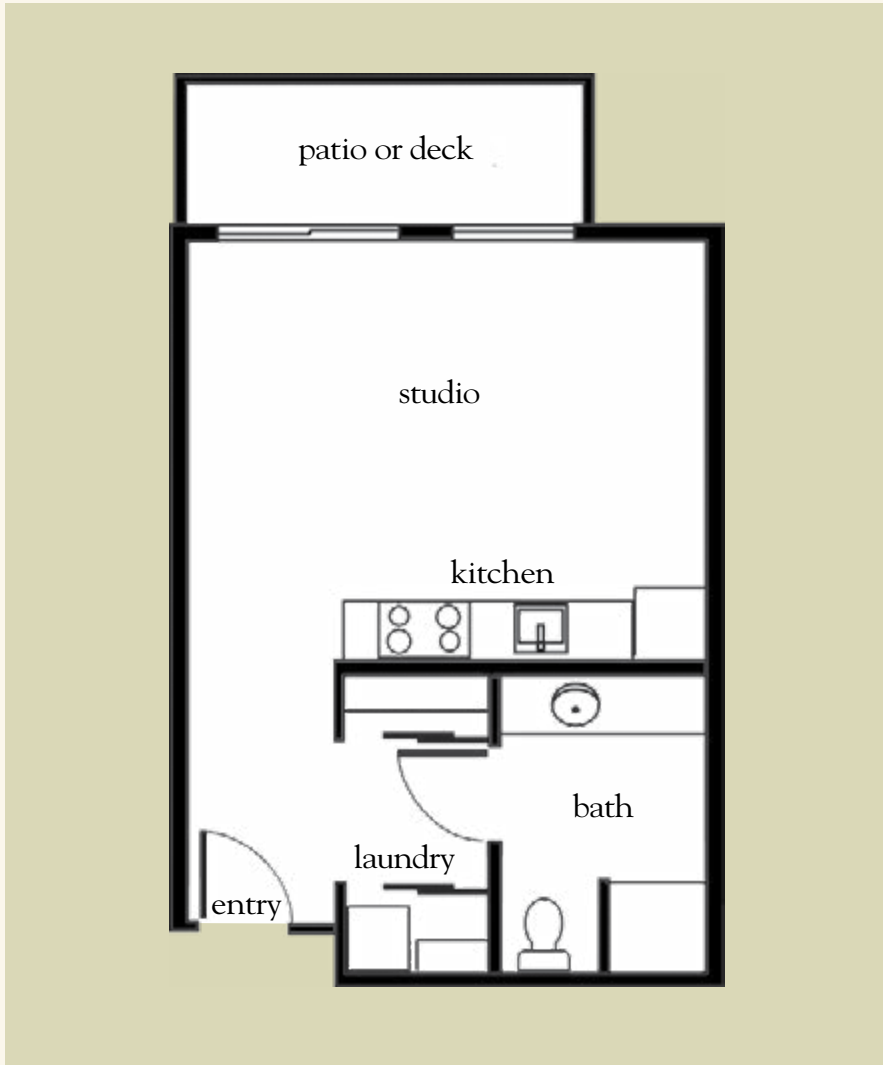


The Sheffield – Studio

472 sq. ft.



The Sheffield – Studio Floor Plan

Apartment No. _____ Apartment Rate _____

Notes _____

Name _____ Date _____

Expires _____

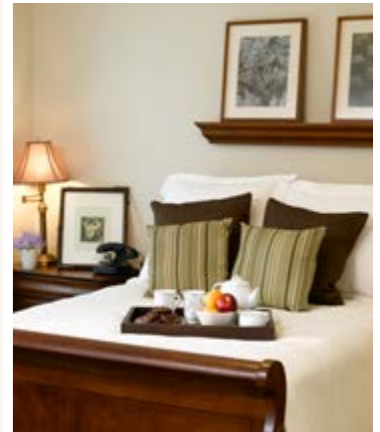
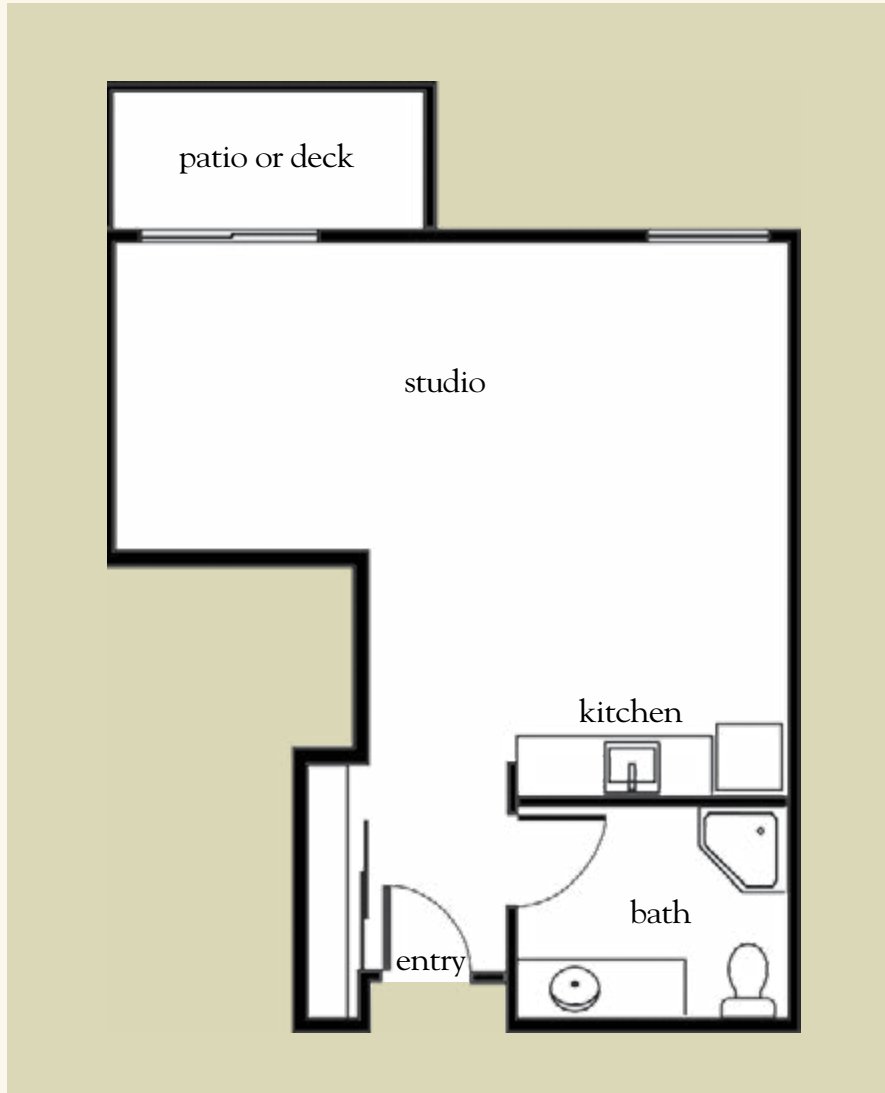
Atria Park OF VINTAGE HILLS

951.506.5555 | AtriaVintageHills.com

Measurements are an approximation and can vary by apartment. All rates are subject to change. License #336426083

The Inn – Studio

538 sq. ft.



The Inn – Studio Floor Plan

Apartment No. _____ Apartment Rate _____

Notes _____

Name _____ Date _____

Expires _____

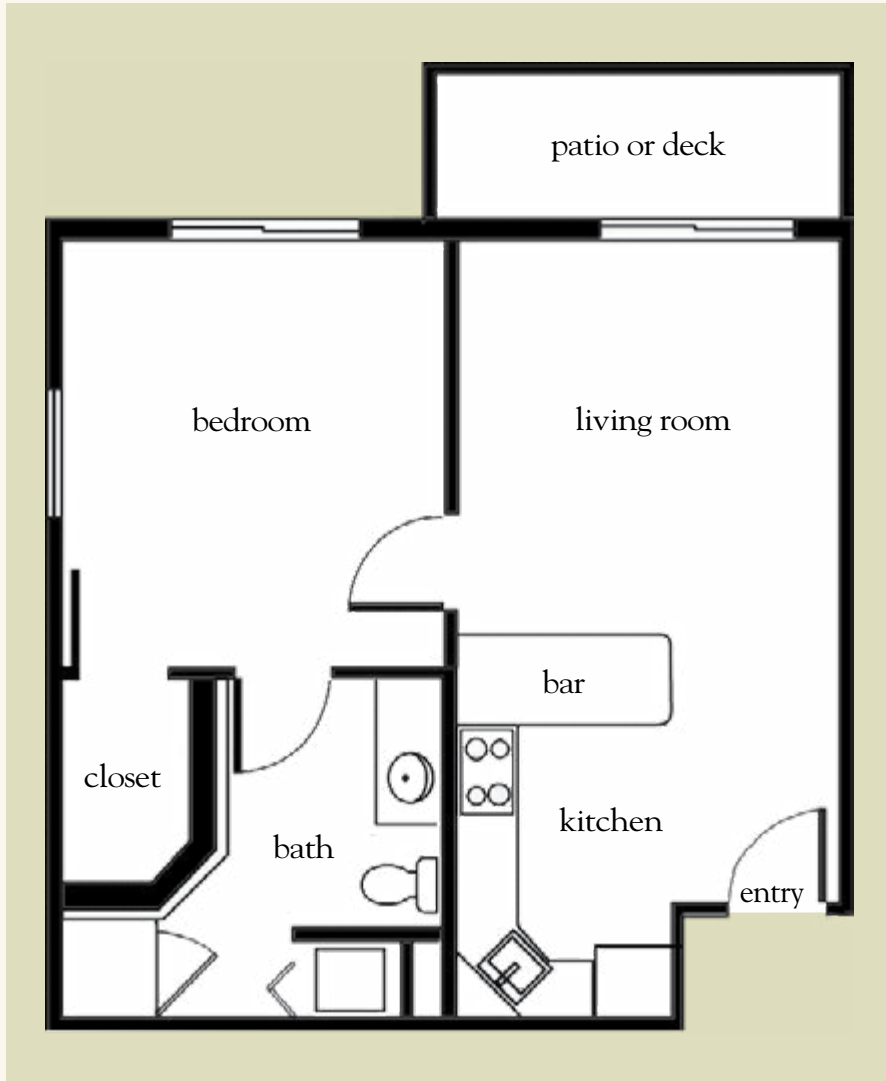
Atria Park OF VINTAGE HILLS

951.506.5555 | AtriaVintageHills.com

Measurements are an approximation and can vary by apartment. All rates are subject to change. License #336426083

The Sheffield – One Bedroom

680 sq. ft.



The Sheffield – One-Bedroom Floor Plan

Apartment No. _____ Apartment Rate _____

Notes _____

Name _____ Date _____

Expires _____

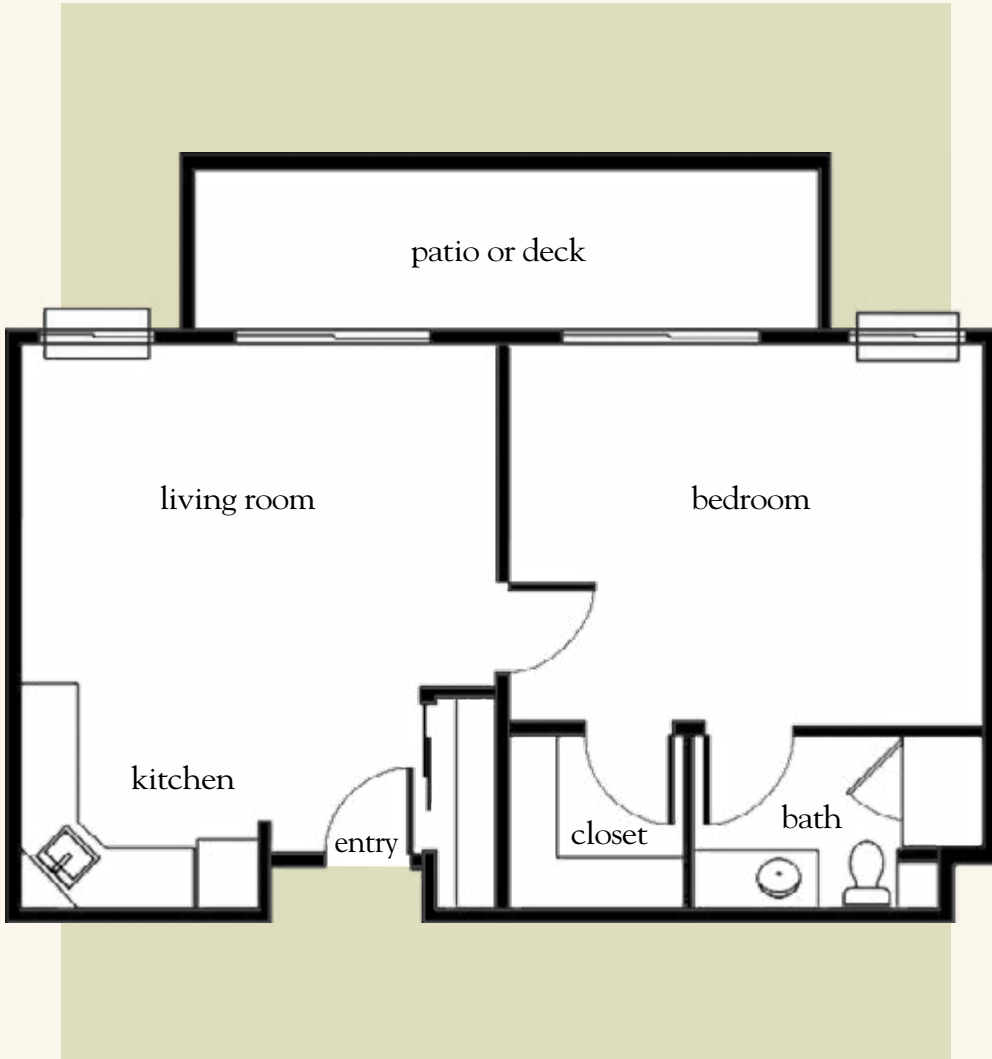
Atria Park OF VINTAGE HILLS

951.506.5555 | AtriaVintageHills.com

Measurements are an approximation and can vary by apartment. All rates are subject to change. License #336426083

The Inn – One Bedroom

680 sq. ft.



The Inn – One-Bedroom Floor Plan

Apartment No. _____ Apartment Rate _____

Notes _____

Name _____ Date _____

Expires _____

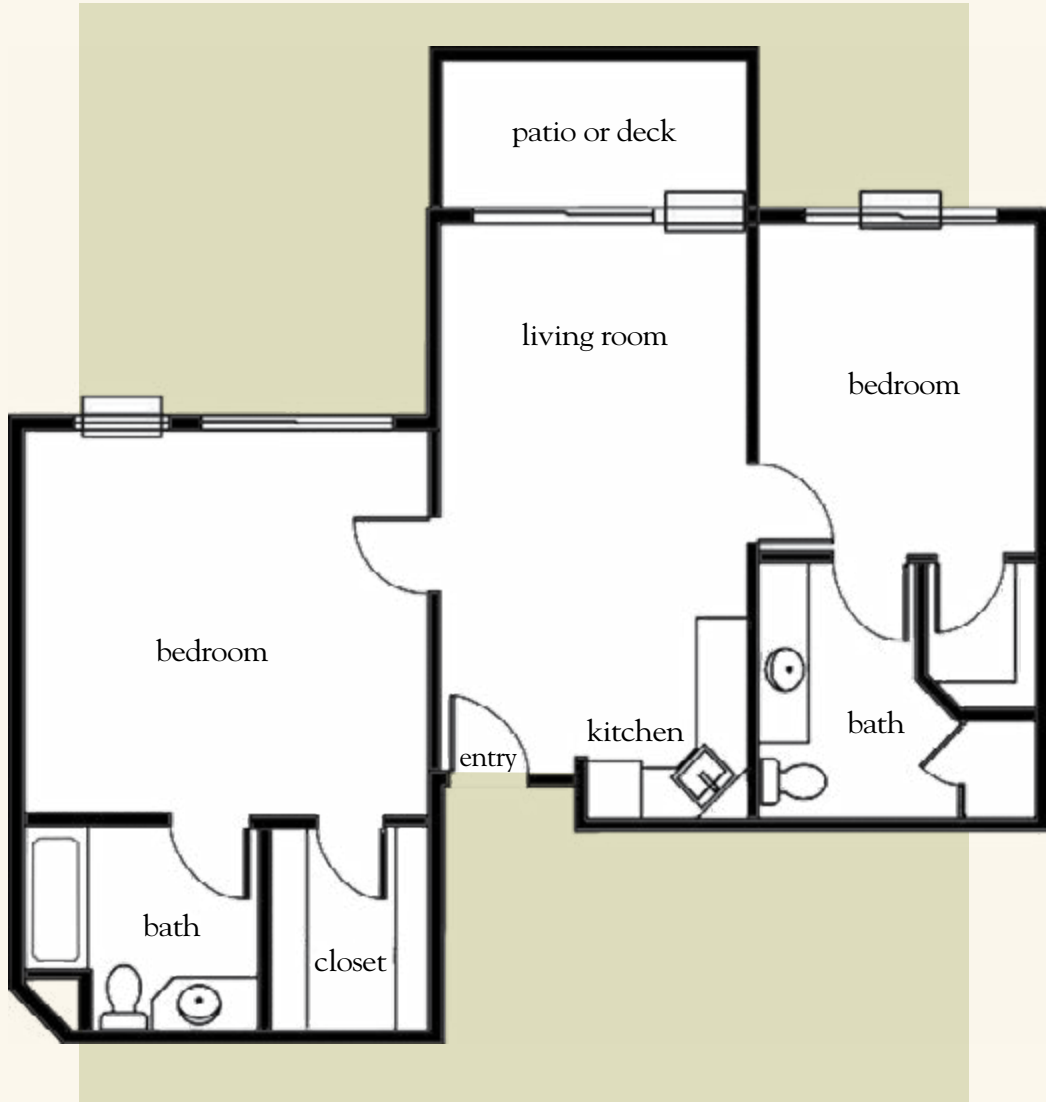
Atria Park OF VINTAGE HILLS

951.506.5555 | AtriaVintageHills.com

Measurements are an approximation and can vary by apartment. All rates are subject to change. License #336426083

The Inn – Two Bedroom

972 sq. ft.



Apartment No. _____ Apartment Rate _____

Notes _____

Name _____ Date _____

Expires _____

Atria Park OF VINTAGE HILLS

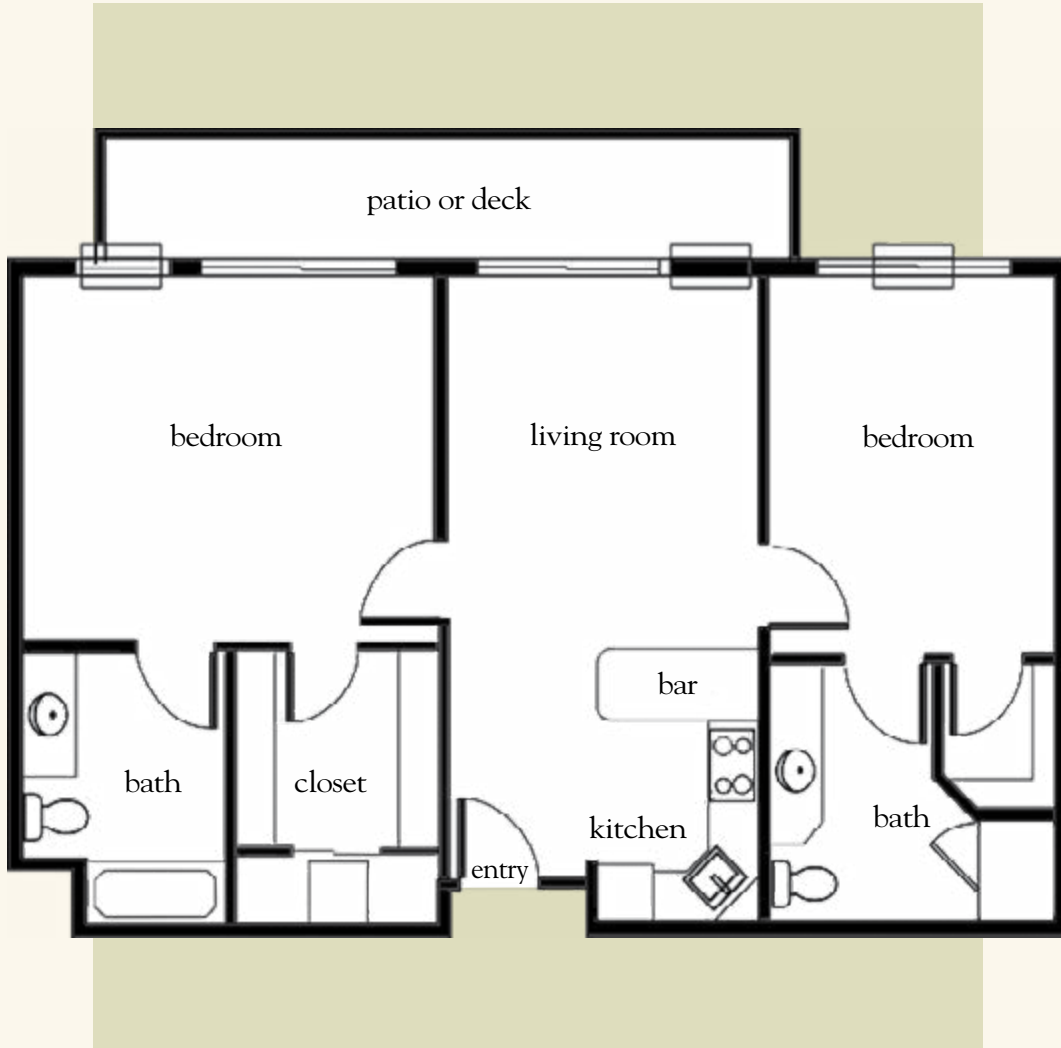
951.506.5555 | AtriaVintageHills.com

Measurements are an approximation and can vary by apartment. All rates are subject to change. License #336426083

The Inn – Two-Bedroom Floor Plan

The Sheffield – Two Bedroom

1,058 sq. ft.



The Sheffield – Two-Bedroom Floor Plan

Apartment No. _____ Apartment Rate _____

Notes _____

Name _____ Date _____

Expires _____

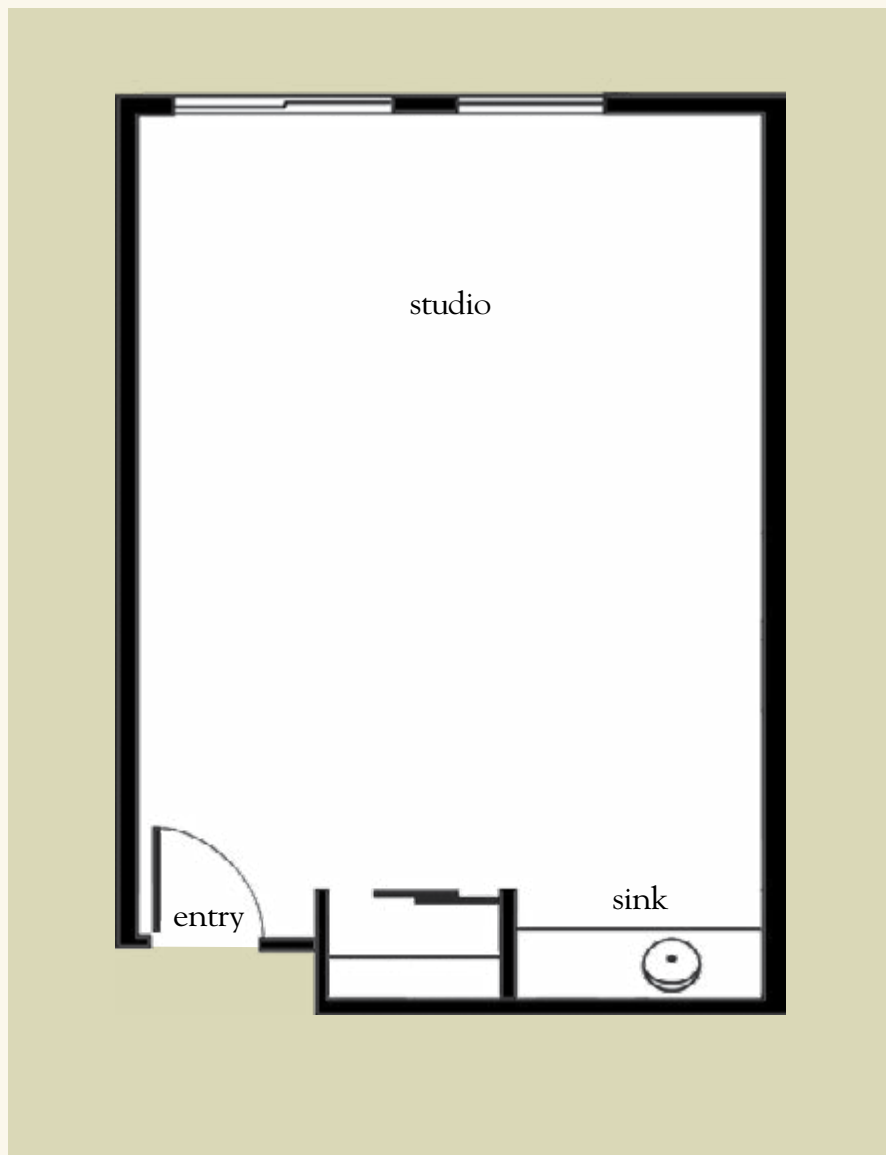
Atria Park OF VINTAGE HILLS

951.506.5555 | AtriaVintageHills.com

Measurements are an approximation and can vary by apartment. All rates are subject to change. License #336426083

184571

Life Guidance[®] Memory Care Studio



Date _____ Name _____

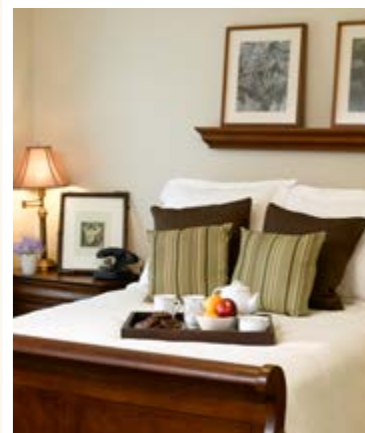
Apartment No. _____ Apartment Rate _____ Expires _____

Notes _____

Atria Park OF VINTAGE HILLS

951.506.5555 | AtriaVintageHills.com

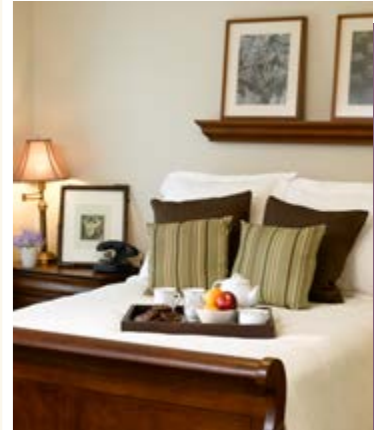
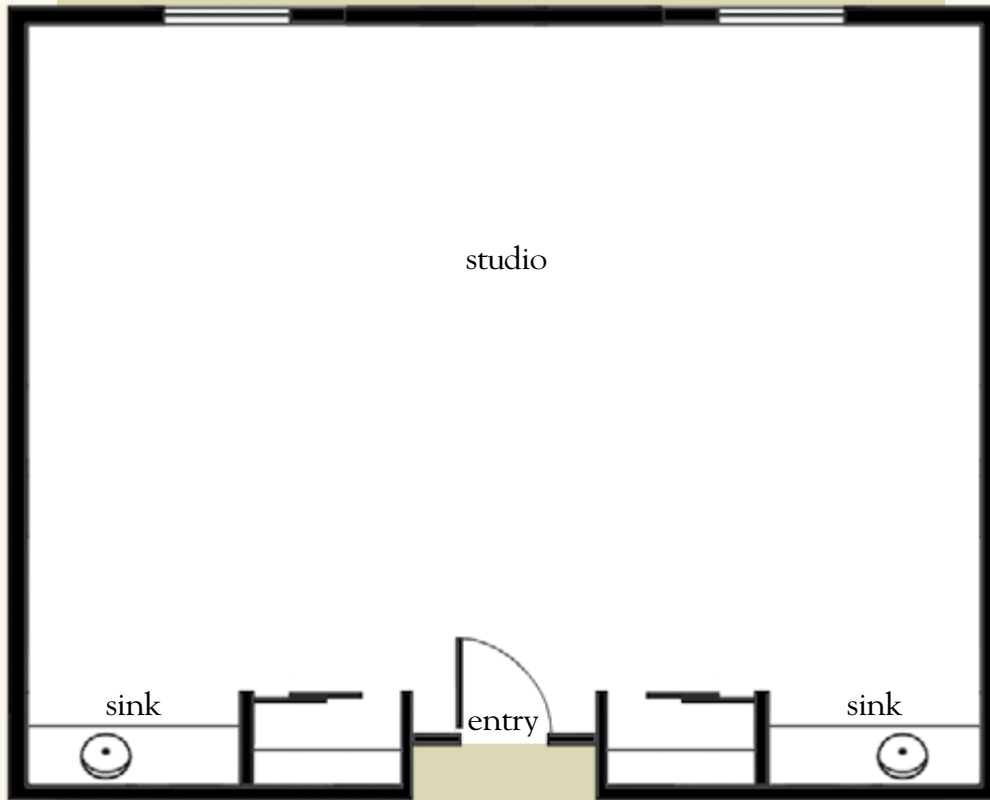
License #336426083



Memory Care Studio Floor Plan

184571

Life Guidance[®] Memory Care Shared Studio



Memory Care Shared Studio Floor Plan

Date _____ Name _____

Apartment No. _____ Apartment Rate _____ Expires _____

Notes _____

Atria Park OF VINTAGE HILLS

951.506.5555 | AtriaVintageHills.com

License #336426083

184571