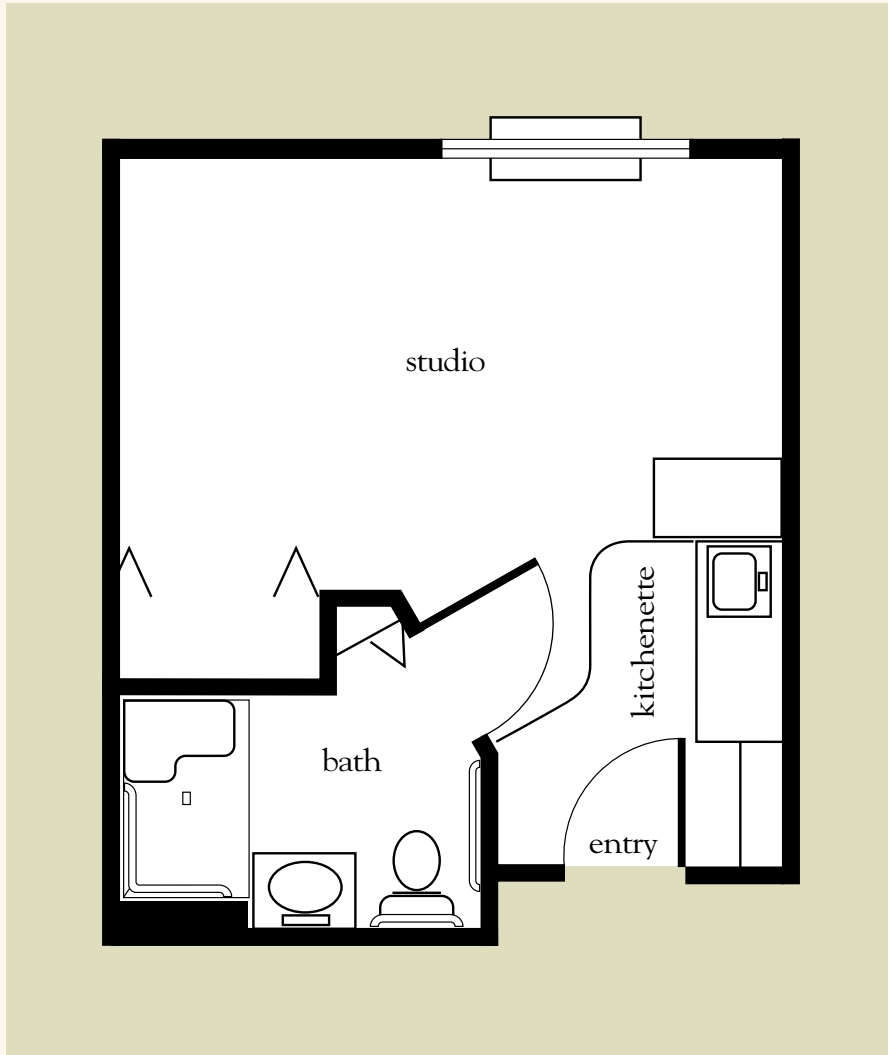


# Studio

315 sq. ft.



Studio Floor Plan

Apartment No. \_\_\_\_\_ Apartment Rate \_\_\_\_\_

Notes \_\_\_\_\_

\_\_\_\_\_

Name \_\_\_\_\_ Date \_\_\_\_\_

Expires \_\_\_\_\_

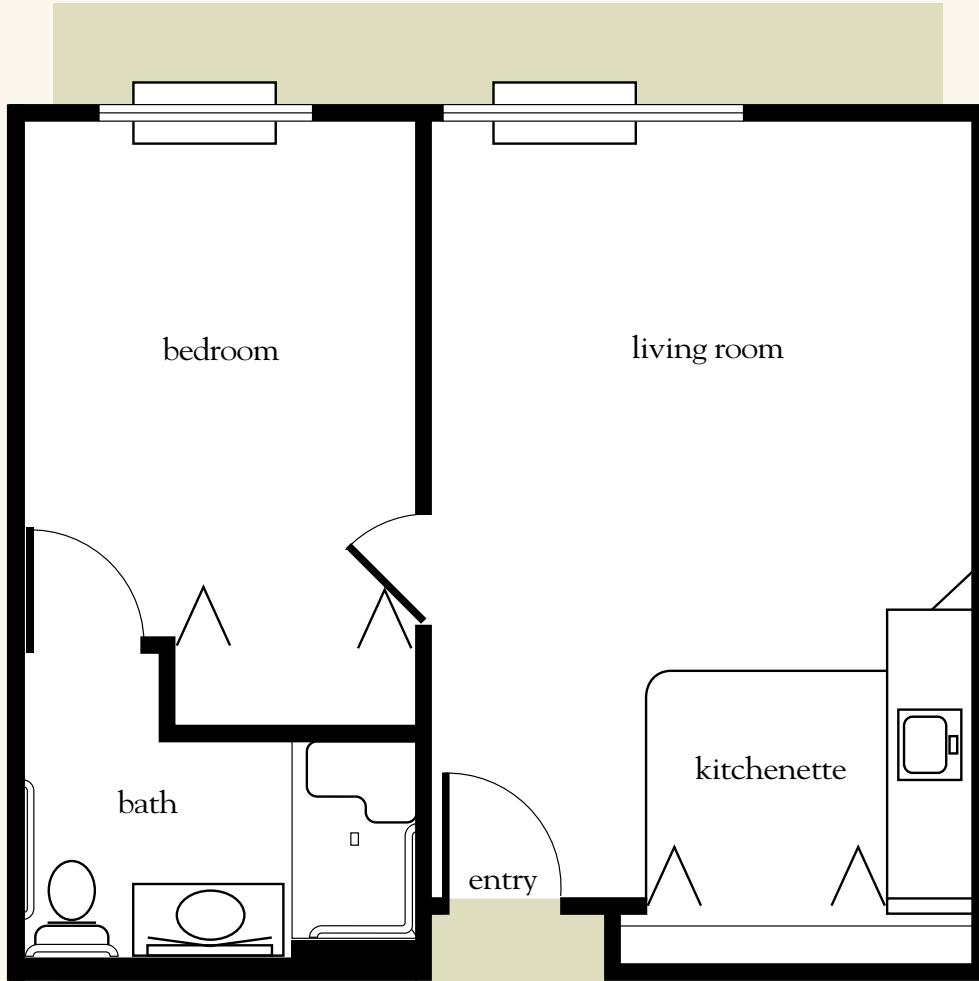
*Atria Park* OF LAKE FOREST

407.322.2207 | [AtriaLakeForest.com](http://AtriaLakeForest.com)

Measurements are an approximation and can vary by apartment. All rates are subject to change. Assisted Living License # 10233

# One Bedroom

485 sq. ft.



One-Bedroom Floor Plan

Apartment No. \_\_\_\_\_ Apartment Rate \_\_\_\_\_

Notes \_\_\_\_\_

\_\_\_\_\_

Name \_\_\_\_\_ Date \_\_\_\_\_

Expires \_\_\_\_\_

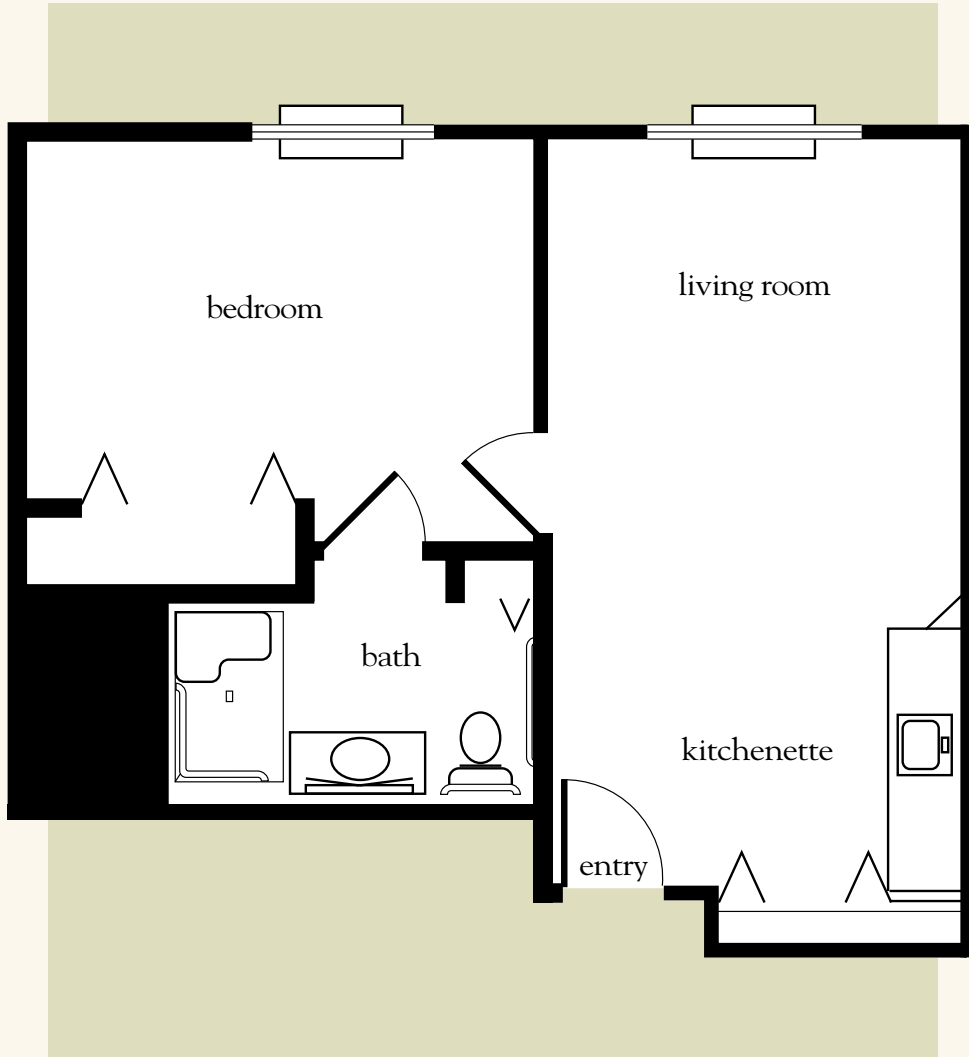
*Atria Park* OF LAKE FOREST

407.322.2207 | [AtriaLakeForest.com](http://AtriaLakeForest.com)

Measurements are an approximation and can vary by apartment. All rates are subject to change. Assisted Living License # 10233

# One Bedroom Deluxe

510 sq. ft.



One-Bedroom Deluxe Floor Plan

Apartment No. \_\_\_\_\_ Apartment Rate \_\_\_\_\_

Notes \_\_\_\_\_

\_\_\_\_\_

Name \_\_\_\_\_ Date \_\_\_\_\_

Expires \_\_\_\_\_

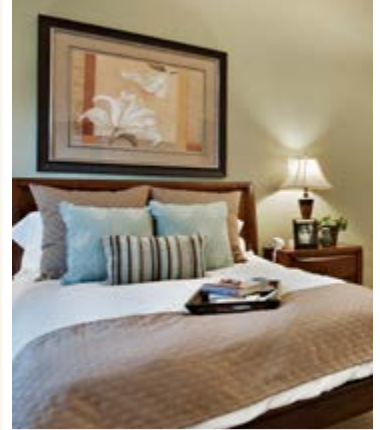
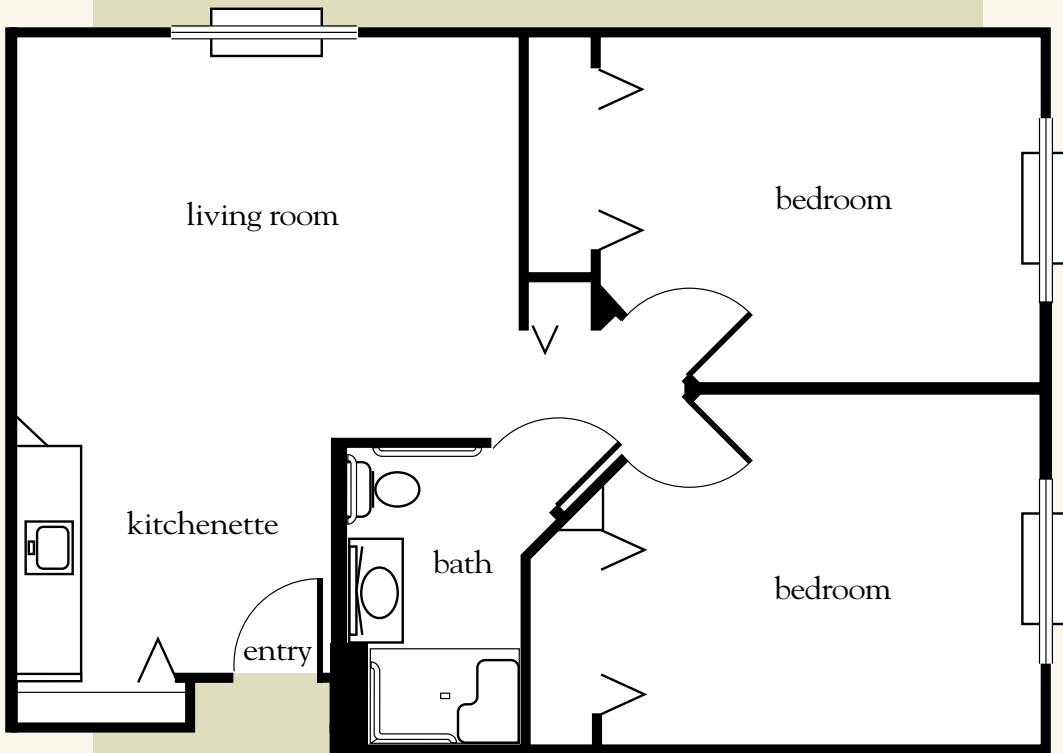
*Atria Park* OF LAKE FOREST

407.322.2207 | [AtriaLakeForest.com](http://AtriaLakeForest.com)

Measurements are an approximation and can vary by apartment. All rates are subject to change. Assisted Living License # 10233

# Two Bedroom

775 sq. ft.



Two-Bedroom Floor Plan

Apartment No. \_\_\_\_\_ Apartment Rate \_\_\_\_\_

Notes \_\_\_\_\_

\_\_\_\_\_

Name \_\_\_\_\_ Date \_\_\_\_\_

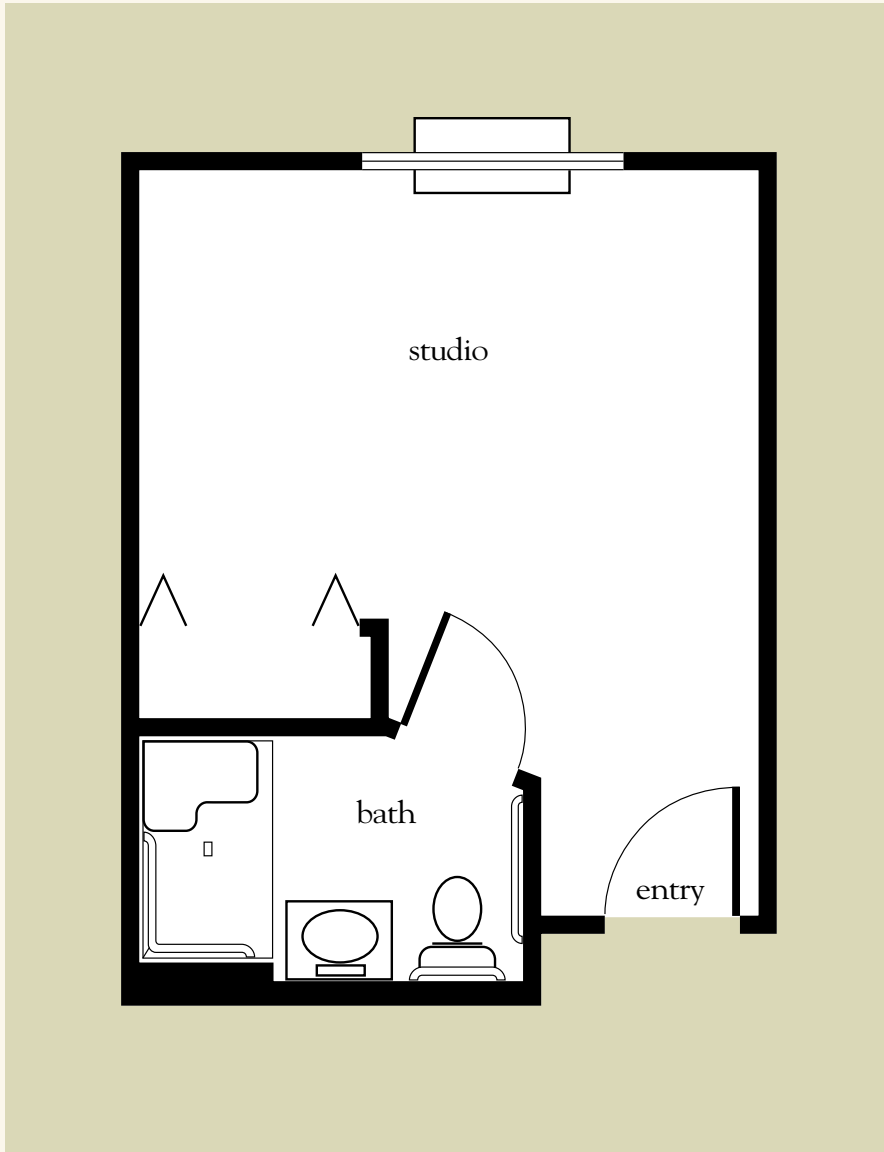
Expires \_\_\_\_\_

*Atria Park* OF LAKE FOREST

407.322.2207 | [AtriaLakeForest.com](http://AtriaLakeForest.com)

Measurements are an approximation and can vary by apartment. All rates are subject to change. Assisted Living License # 10233

# Life Guidance<sup>®</sup> Memory Care Studio



Date \_\_\_\_\_ Name \_\_\_\_\_

Apartment No. \_\_\_\_\_ Apartment Rate \_\_\_\_\_ Expires \_\_\_\_\_

Notes \_\_\_\_\_

\_\_\_\_\_

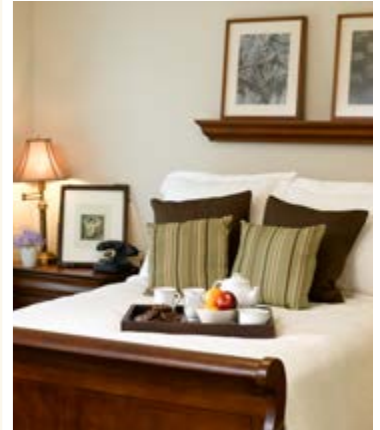
\_\_\_\_\_

*Atria Park* OF LAKE FOREST

407.322.2207 | [AtriaLakeForest.com](http://AtriaLakeForest.com)

Measurements are an approximation and can vary by apartment. All rates are subject to change. Assisted Living License # 10233

270-360 sq. ft.



Memory Care Studio Floor Plan