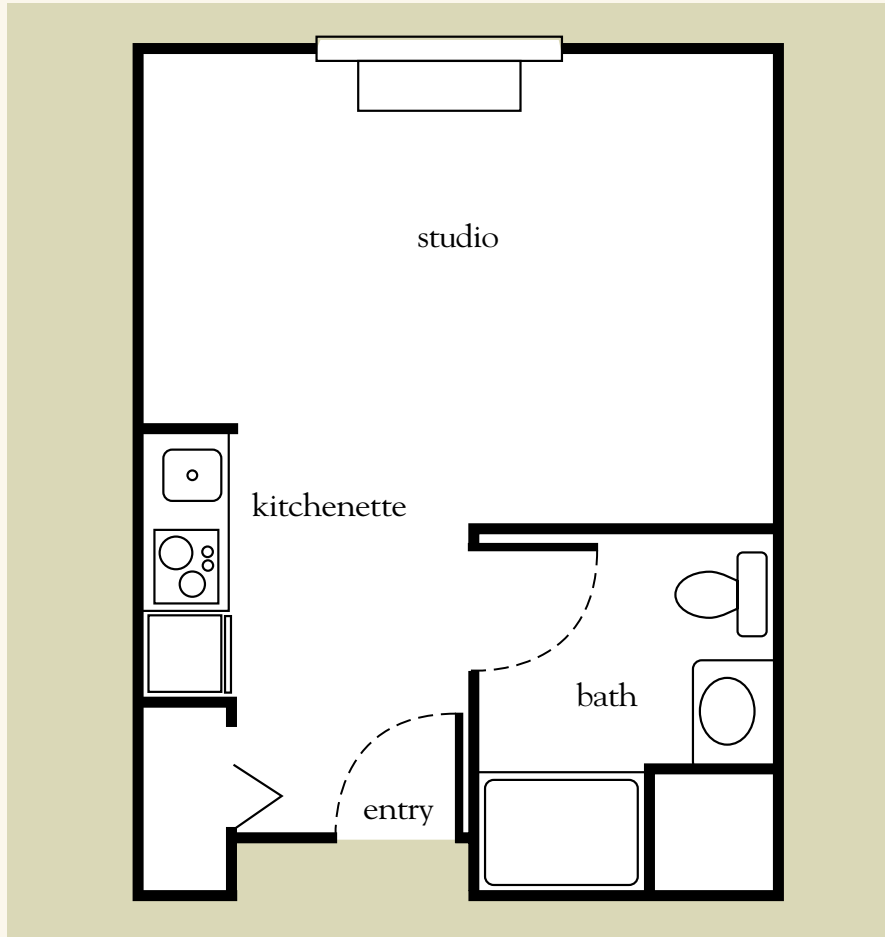


Studio



306 sq. ft.



Studio Floor Plan

Apartment No. _____ Apartment Rate _____

Notes _____

Name _____ Date _____

Expires _____

Atria LUTZ

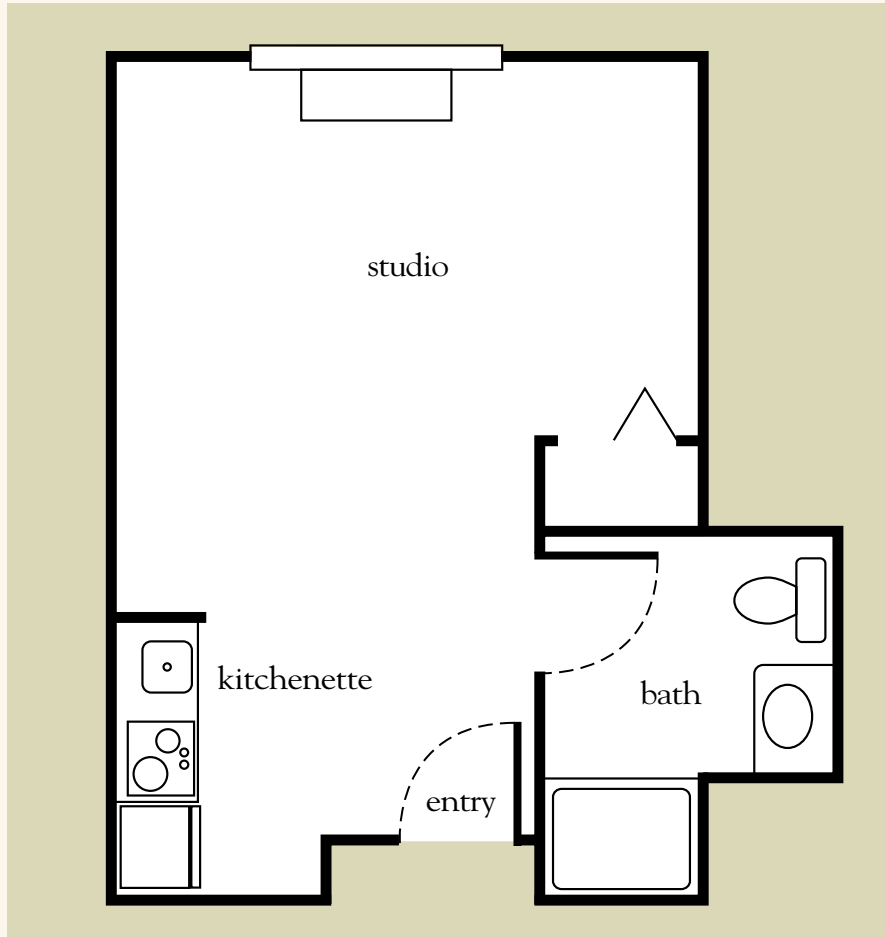
813.909.9679 | AtriaLutz.com

Measurements are an approximation and can vary by apartment. All rates are subject to change.

Assisted Living License # 9734

  227396

Studio



Apartment No. _____ Apartment Rate _____

Notes _____

Name _____ Date _____

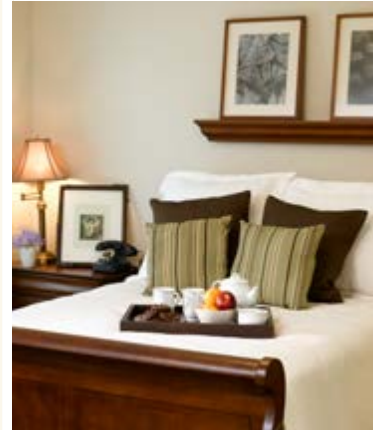
Expires _____

Atria LUTZ

813.909.9679 | AtriaLutz.com

Measurements are an approximation and can vary by apartment. All rates are subject to change.

316 sq. ft.

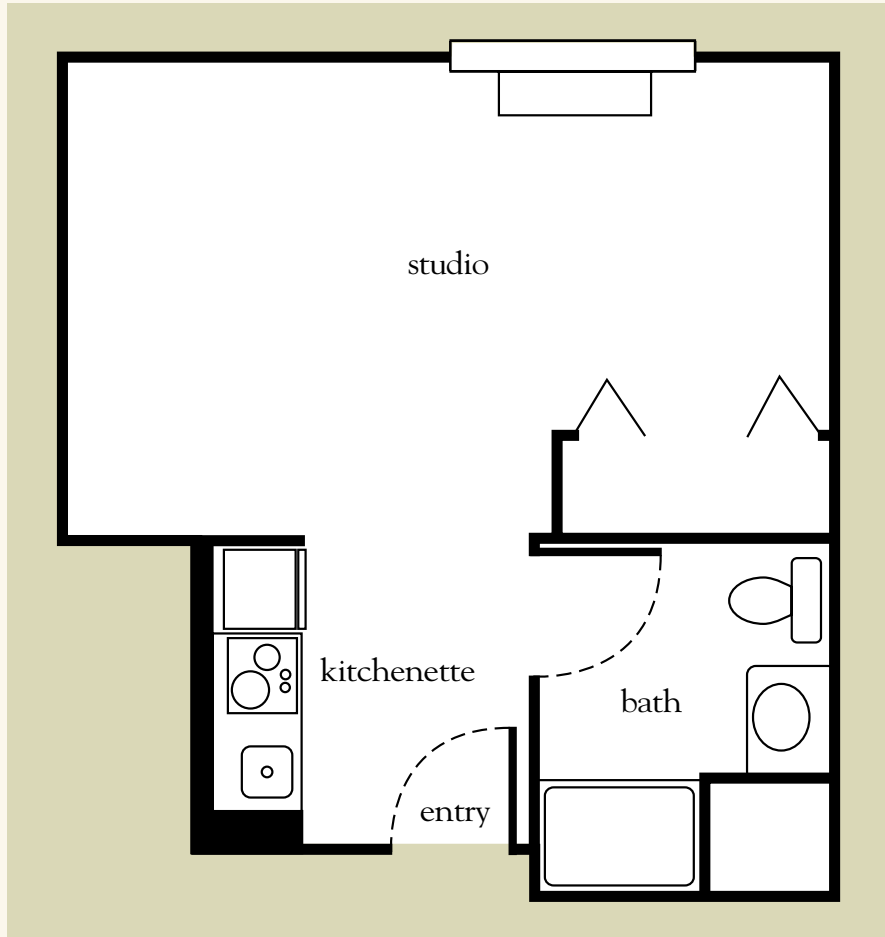


Studio Floor Plan

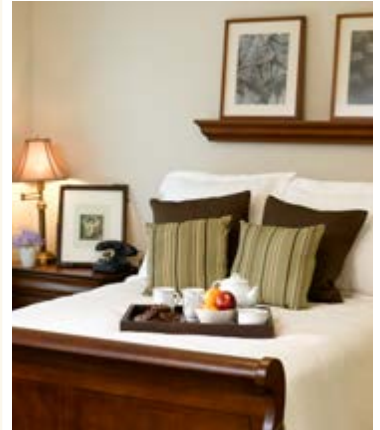
Assisted Living License # 9734

  227396

Studio Deluxe



335 sq. ft.



Studio Deluxe Floor Plan

Apartment No. _____ Apartment Rate _____

Notes _____

Name _____ Date _____

Expires _____

Atria LUTZ

813.909.9679 | AtriaLutz.com

Measurements are an approximation and can vary by apartment. All rates are subject to change.

Assisted Living License # 9734

227396

One Bedroom

469 sq. ft.



One Bedroom Floor Plan

Apartment No. _____ Apartment Rate _____

Notes _____

Name _____ Date _____

Expires _____

Atria LUTZ

813.909.9679 | AtriaLutz.com

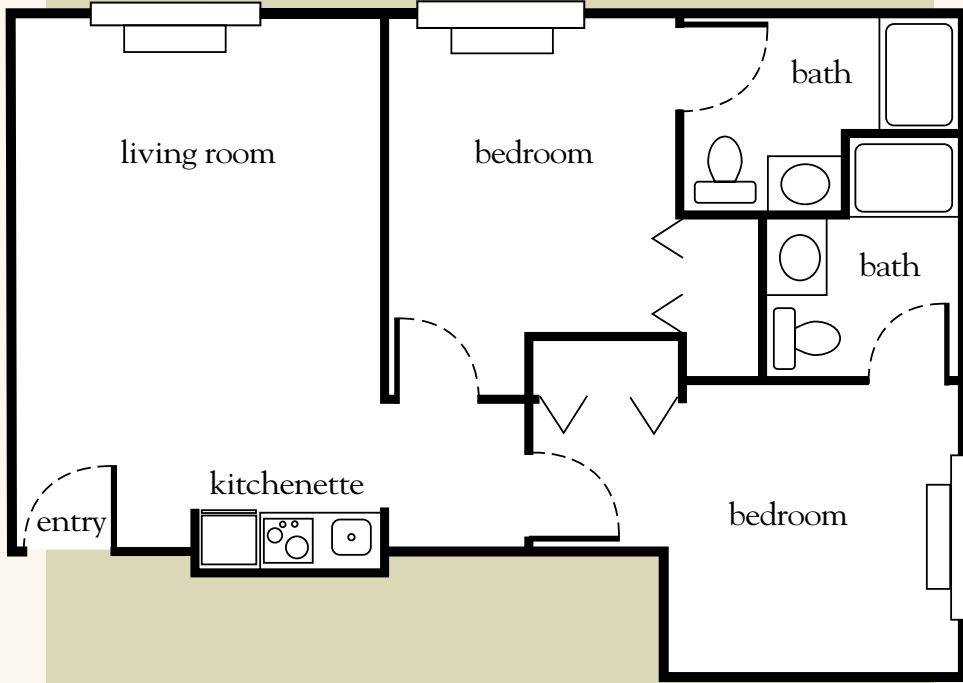
Measurements are an approximation and can vary by apartment. All rates are subject to change.

Assisted Living License # 9734

  227396

Two Bedroom

749-761 sq. ft.



Two-Bedroom Floor Plan

Apartment No. _____ Apartment Rate _____

Notes _____

Name _____ Date _____

Expires _____

Atria LUTZ

813.909.9679 | AtriaLutz.com

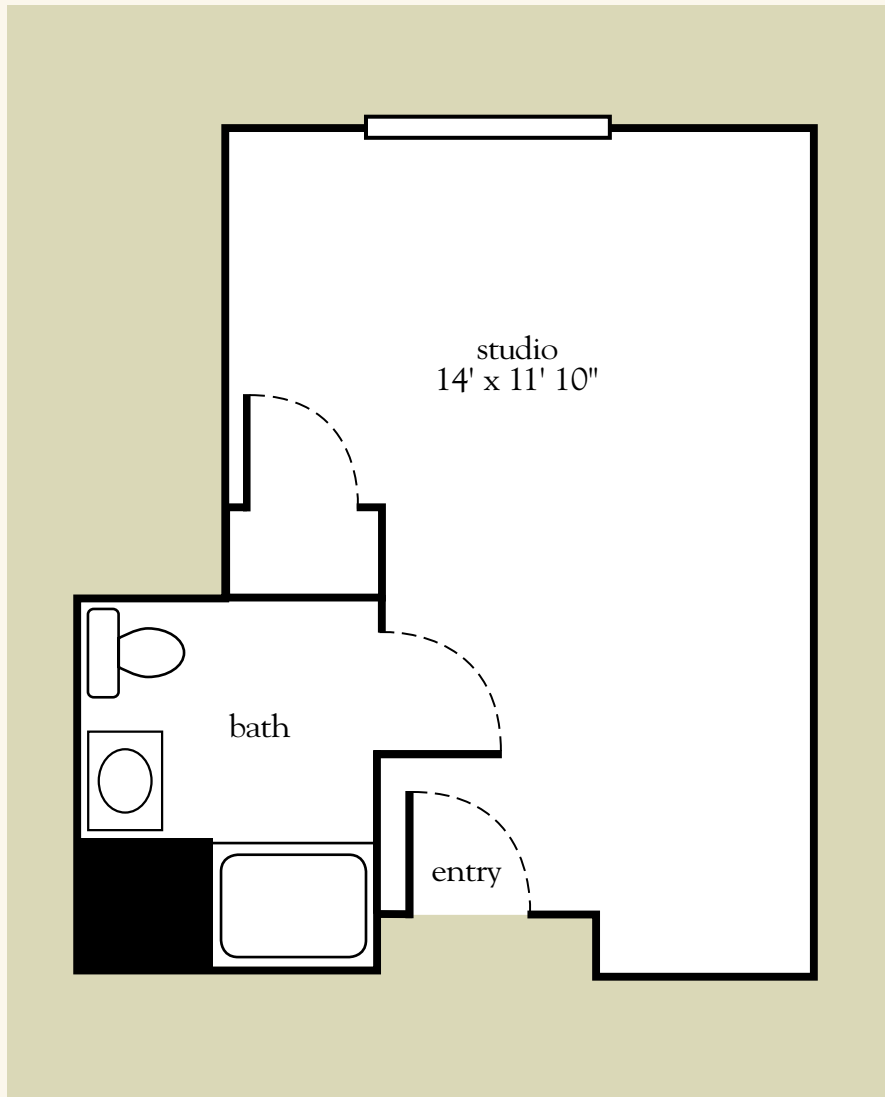
Measurements are an approximation and can vary by apartment. All rates are subject to change.

Assisted Living License # 9734

227396

Memory Care Studio

244-336 sq. ft.



Memory Care Studio Floor Plan

Date _____ Name _____

Apartment No. _____ Apartment Rate _____ Expires _____

Notes _____

Atria LUTZ

813.909.9679 | AtriaLutz.com

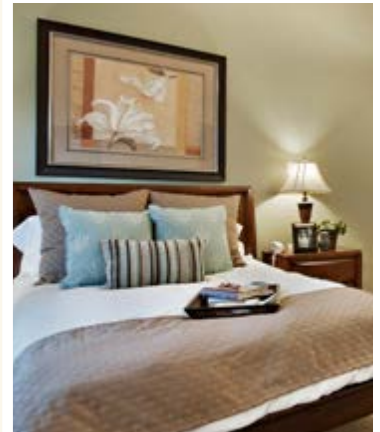
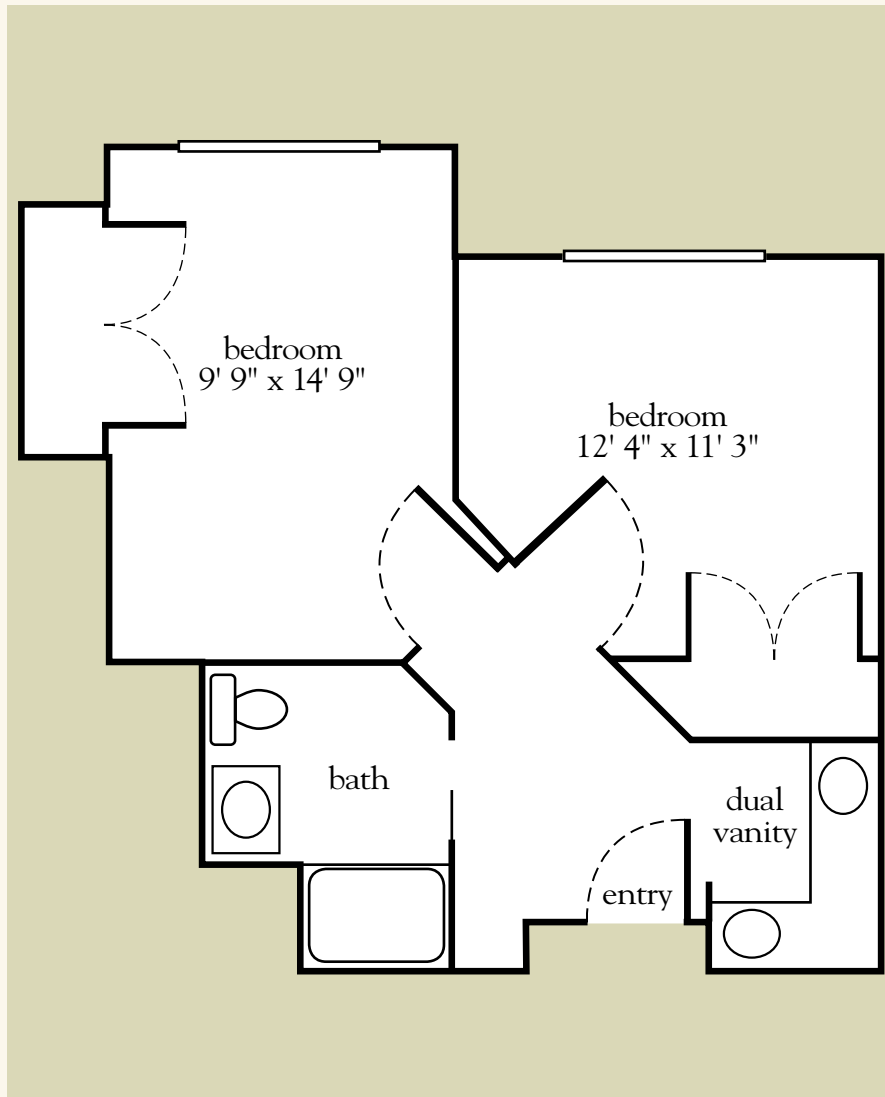
Measurements are an approximation and can vary by apartment. All rates are subject to change.

Assisted Living License # 9734

227396

Memory Care Shared Two Bedroom

468-502 sq. ft.



Shared Two Bedroom Floor Plan

Date _____ Name _____

Apartment No. _____ Apartment Rate _____ Expires _____

Notes _____

Atria LUTZ

813.909.9679 | AtriaLutz.com

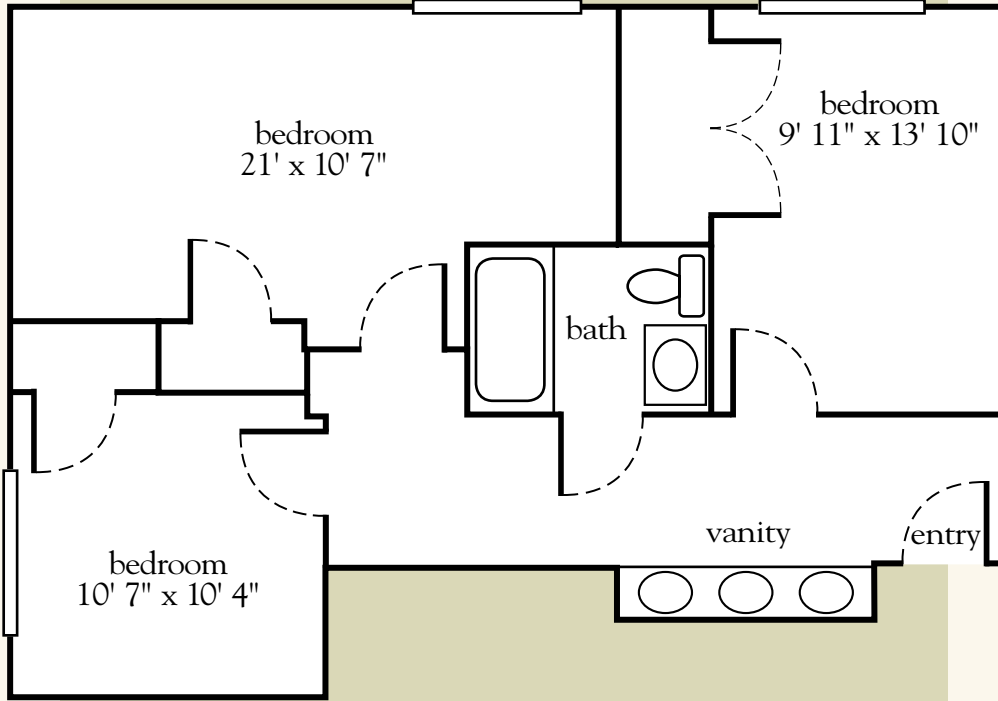
Measurements are an approximation and can vary by apartment. All rates are subject to change.

Assisted Living License # 9734

227396

Memory Care Shared Three Bedroom

724 sq. ft.



Memory Care Shared Three-Bedroom Floor Plan

Date _____ Name _____

Apartment No. _____ Apartment Rate _____ Expires _____

Notes _____

Atria LUTZ

813.909.9679 | AtriaLutz.com

Measurements are an approximation and can vary by apartment. All rates are subject to change.

Assisted Living License # 9734

227396