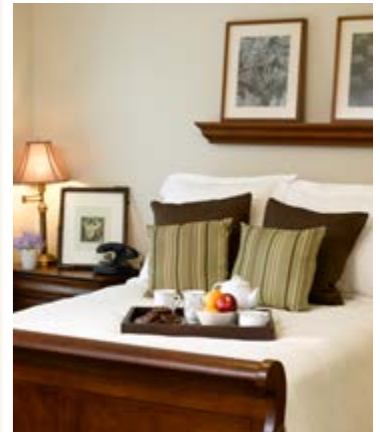
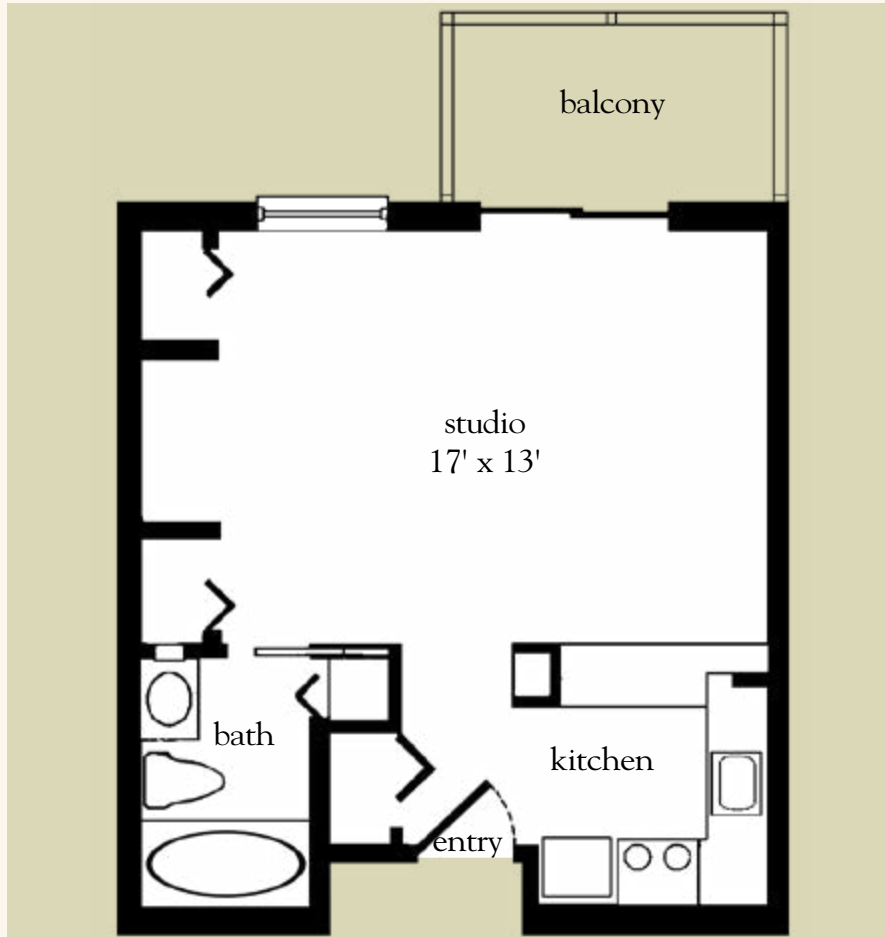


# Studio

460 sq. ft.



Studio Floor Plan

Apartment No. \_\_\_\_\_ Apartment Rate \_\_\_\_\_

Notes \_\_\_\_\_

Name \_\_\_\_\_ Date \_\_\_\_\_

Expires \_\_\_\_\_

*Atria* WINDSOR WOODS

727.869.3533 | [AtriaWindsorWoods.com](http://AtriaWindsorWoods.com)

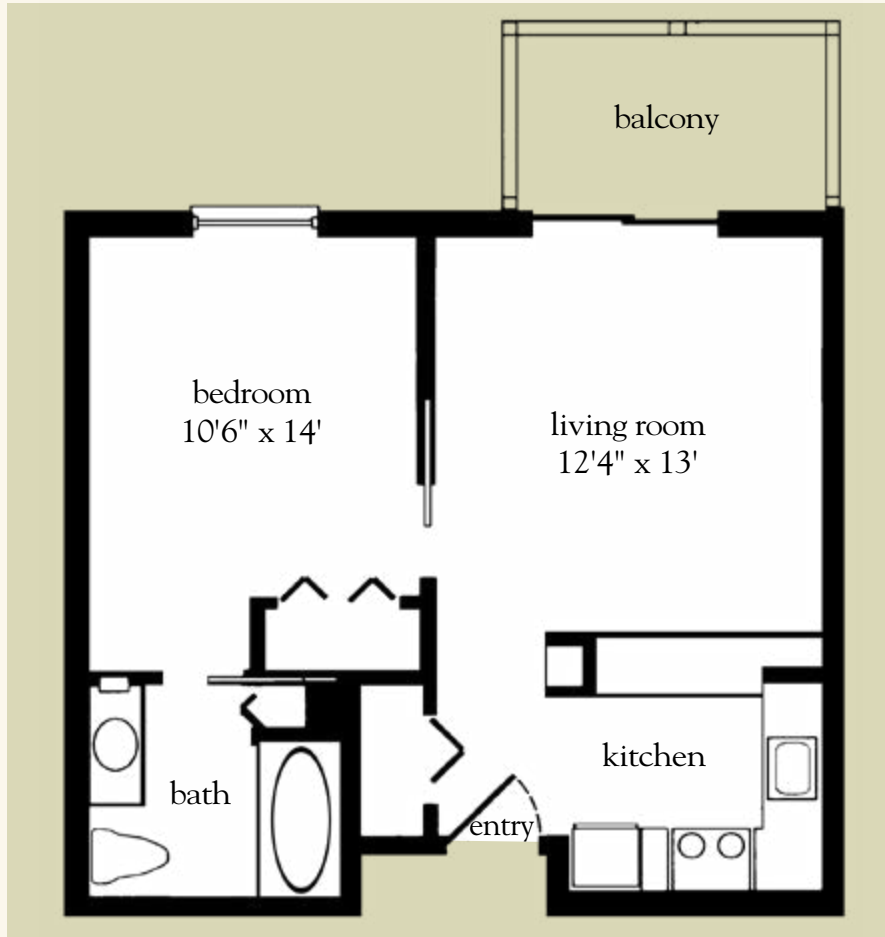
Measurements are an approximation and can vary by apartment. All rates are subject to change.

Assisted Living License # 7242

212688

# One Bedroom

552 sq. ft.



One-Bedroom Floor Plan

Apartment No. \_\_\_\_\_ Apartment Rate \_\_\_\_\_

Notes \_\_\_\_\_

Name \_\_\_\_\_ Date \_\_\_\_\_

Expires \_\_\_\_\_

*Atria* WINDSOR WOODS

727.869.3533 | [AtriaWindsorWoods.com](http://AtriaWindsorWoods.com)

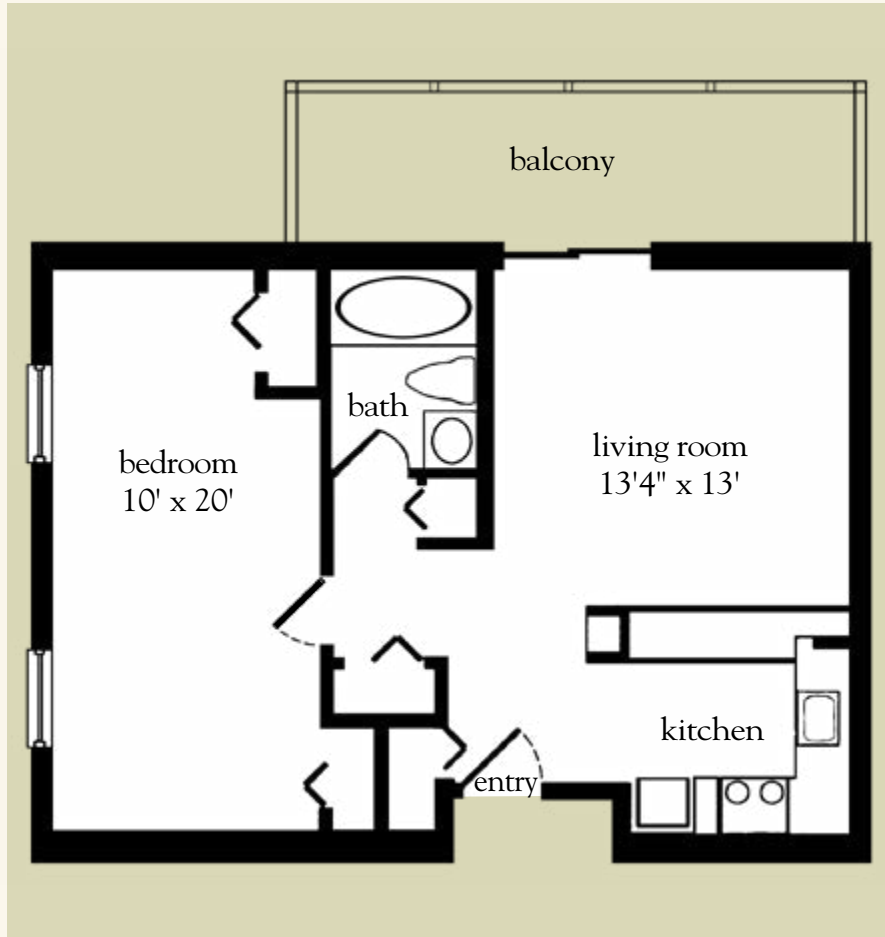
Measurements are an approximation and can vary by apartment. All rates are subject to change.

Assisted Living License # 7242

212688

# One Bedroom Deluxe

725 sq. ft.



One-Bedroom Deluxe Floor Plan

Apartment No. \_\_\_\_\_ Apartment Rate \_\_\_\_\_

Notes \_\_\_\_\_

Name \_\_\_\_\_ Date \_\_\_\_\_

Expires \_\_\_\_\_

*Atria* WINDSOR WOODS

727.869.3533 | [AtriaWindsorWoods.com](http://AtriaWindsorWoods.com)

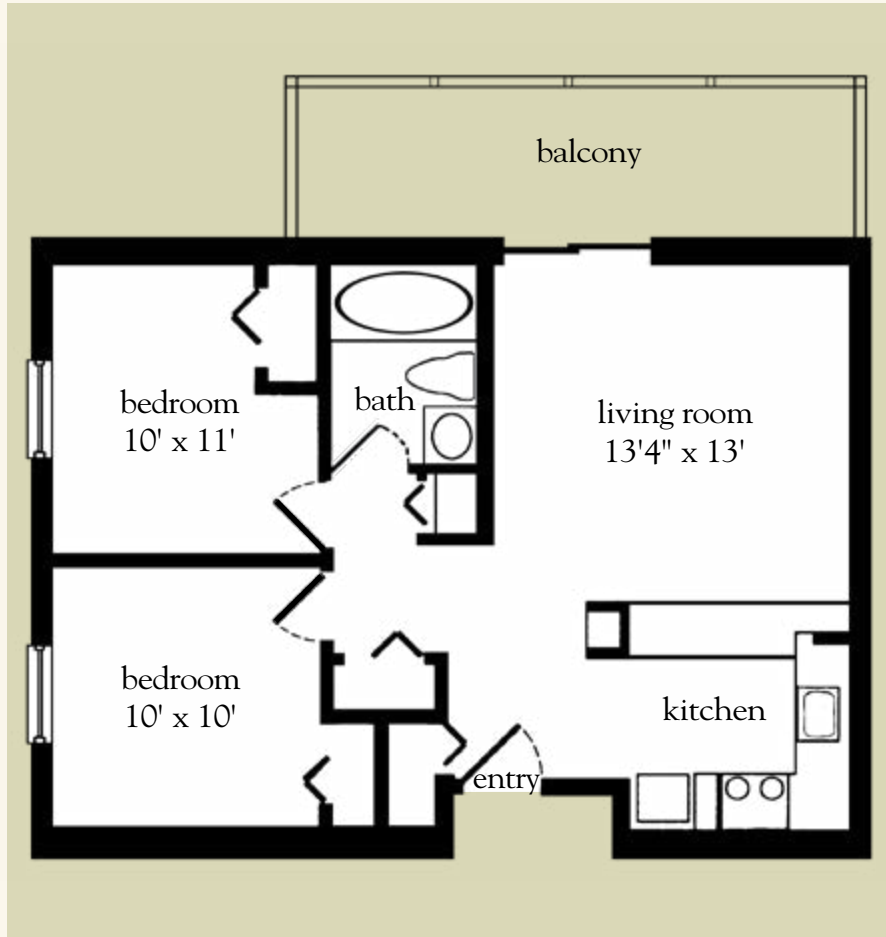
Measurements are an approximation and can vary by apartment. All rates are subject to change.

Assisted Living License # 7242

212688

# Two Bedroom

759 sq. ft.



Two-Bedroom Floor Plan

Apartment No. \_\_\_\_\_ Apartment Rate \_\_\_\_\_

Notes \_\_\_\_\_

\_\_\_\_\_

\_\_\_\_\_

Name \_\_\_\_\_ Date \_\_\_\_\_

Expires \_\_\_\_\_

*Atria* WINDSOR WOODS

727.869.3533 | [AtriaWindsorWoods.com](http://AtriaWindsorWoods.com)

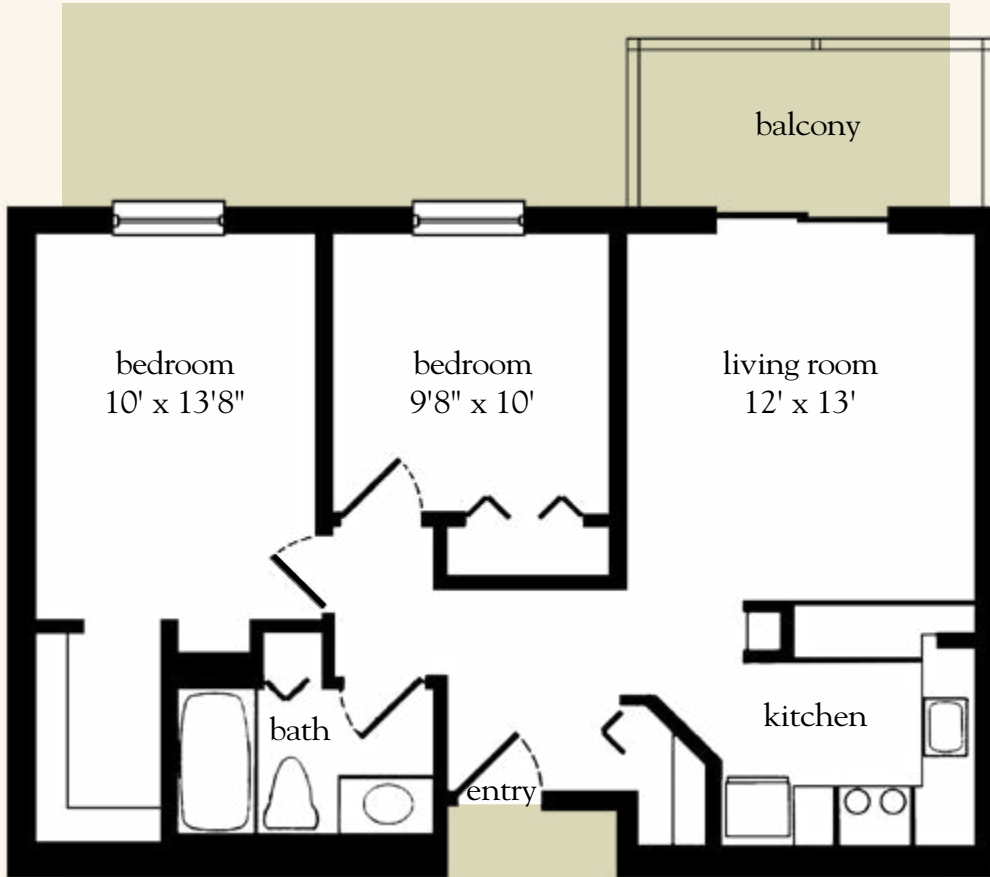
Measurements are an approximation and can vary by apartment. All rates are subject to change.

Assisted Living License # 7242

171314

# Two Bedroom

759 sq. ft.



Two-Bedroom Floor Plan

Apartment No. \_\_\_\_\_ Apartment Rate \_\_\_\_\_

Notes \_\_\_\_\_

Name \_\_\_\_\_ Date \_\_\_\_\_

Expires \_\_\_\_\_

*Atria* WINDSOR WOODS

727.869.3533 | [AtriaWindsorWoods.com](http://AtriaWindsorWoods.com)

Measurements are an approximation and can vary by apartment. All rates are subject to change.

Assisted Living License # 7242

212688