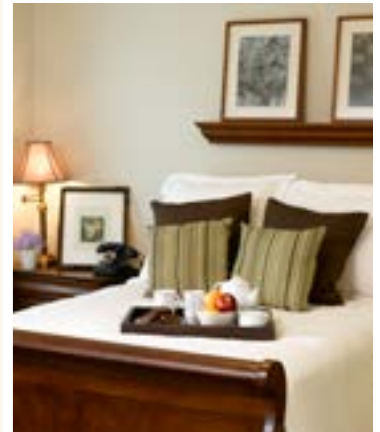
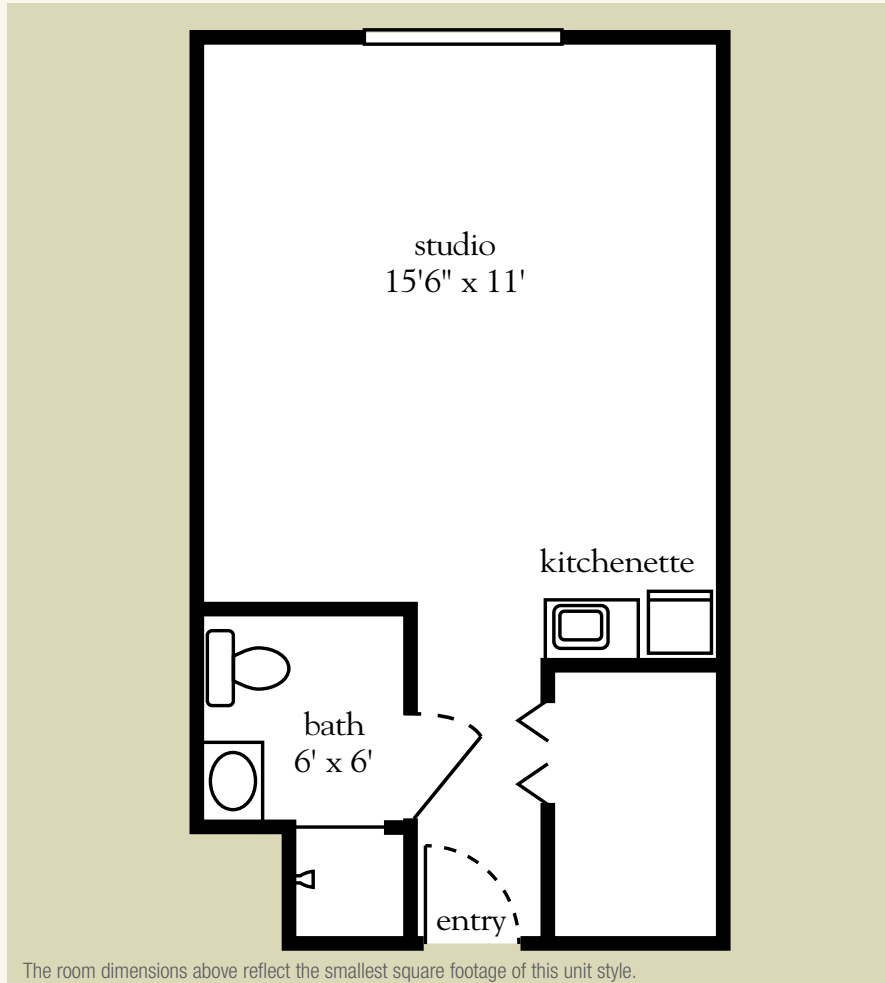


Studio

312-410 sq. ft.



Studio Floor Plan

Apartment No. _____ Apartment Rate _____

Notes _____

Name _____ Date _____

Expires _____

Atria COUNTRYSIDE

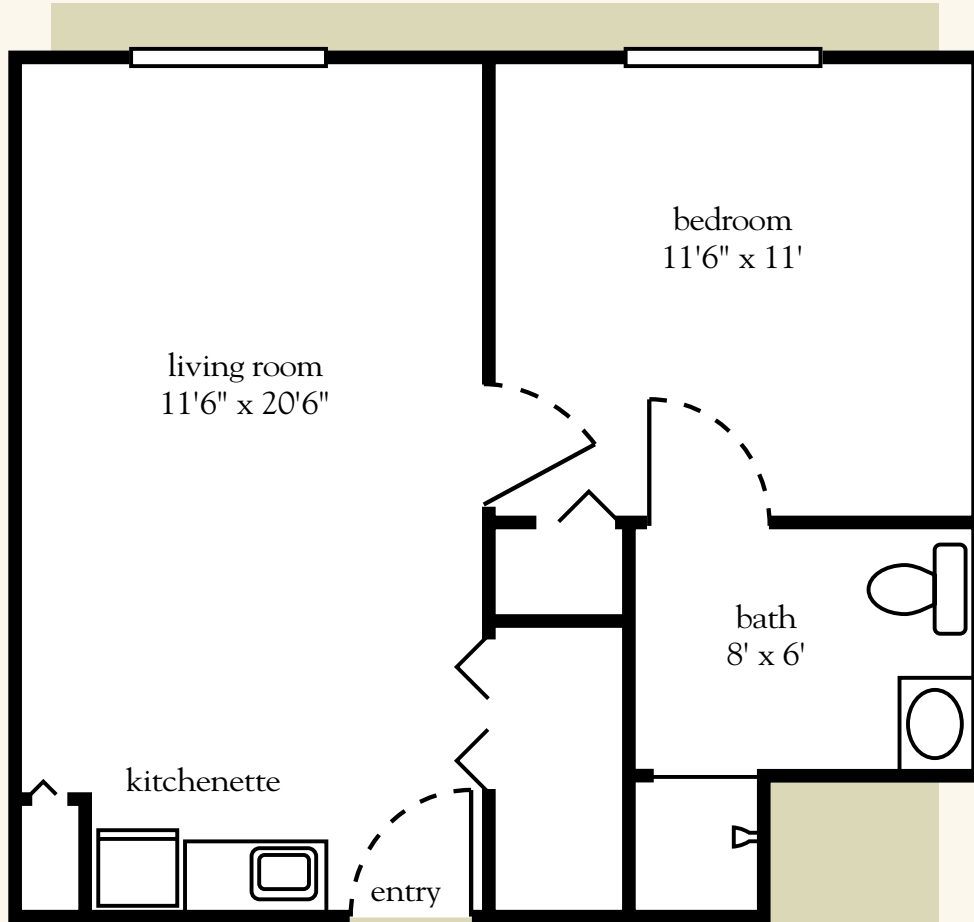
727.723.7110 | AtriaCountryside.com

Measurements are an approximation and can vary by apartment. All rates are subject to change.

Assisted Living License # 9748

One Bedroom

471-523 sq. ft.



The room dimensions above reflect the smallest square footage of this unit style.



One-Bedroom Floor Plan

Apartment No. _____ Apartment Rate _____

Notes _____

Name _____ Date _____

Expires _____

Atria COUNTRYSIDE

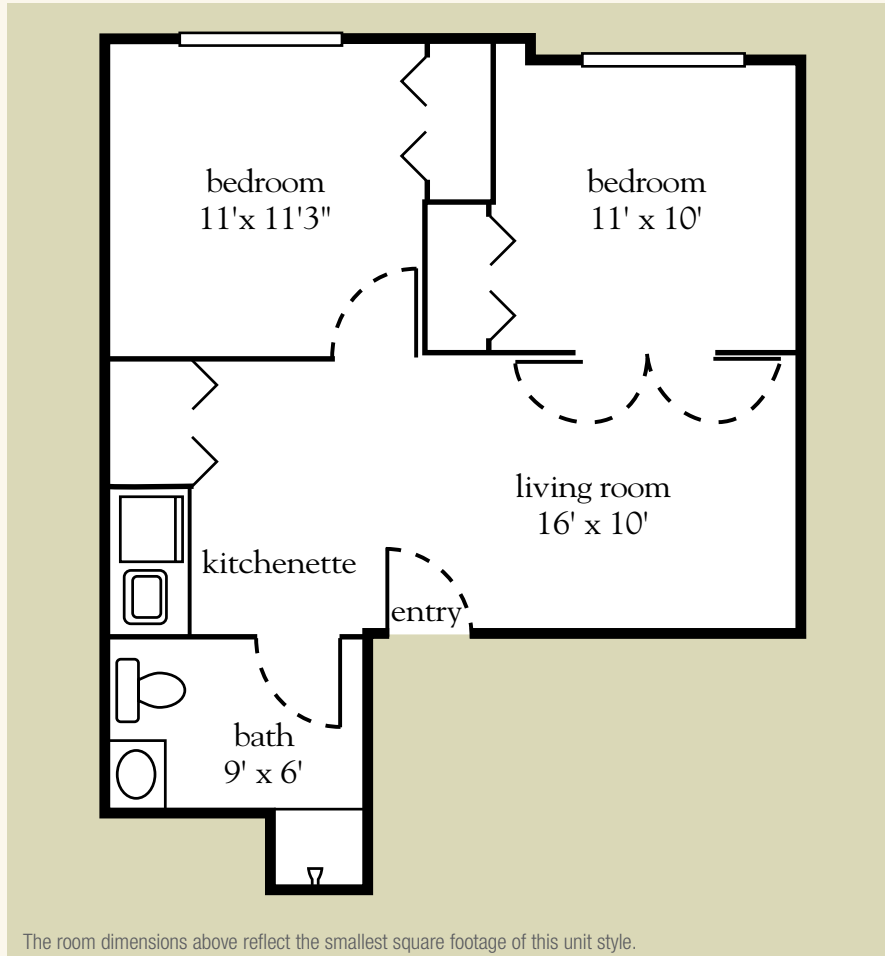
727.723.7110 | AtriaCountryside.com

Measurements are an approximation and can vary by apartment. All rates are subject to change.

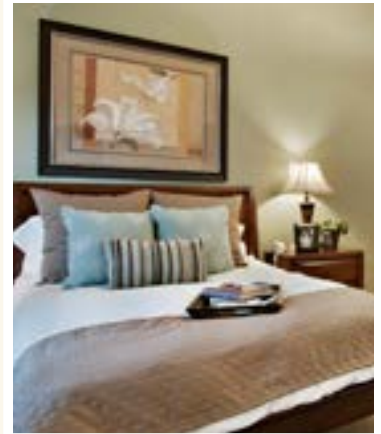
Assisted Living License # 9748

Two Bedroom

513-600 sq. ft.



The room dimensions above reflect the smallest square footage of this unit style.



Two-Bedroom Floor Plan

Apartment No. _____ Apartment Rate _____

Notes _____

Name _____ Date _____

Expires _____

Atria COUNTRYSIDE

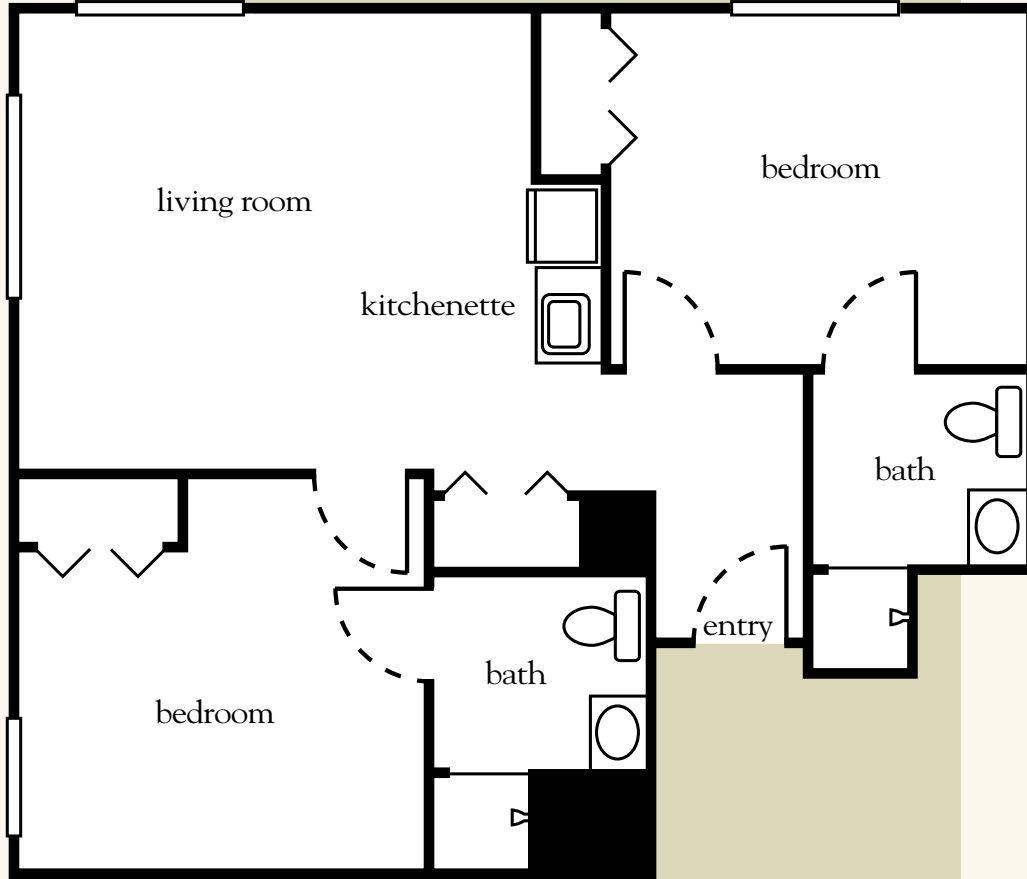
727.723.7110 | AtriaCountryside.com

Measurements are an approximation and can vary by apartment. All rates are subject to change.

Assisted Living License # 9748

Two Bedroom, Two Bath

600-751 sq. ft.



Two-Bedroom, Two-Bath Floor Plan

Apartment No. _____ Apartment Rate _____

Notes _____

Name _____ Date _____

Expires _____

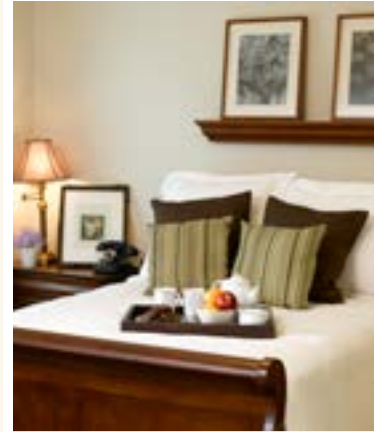
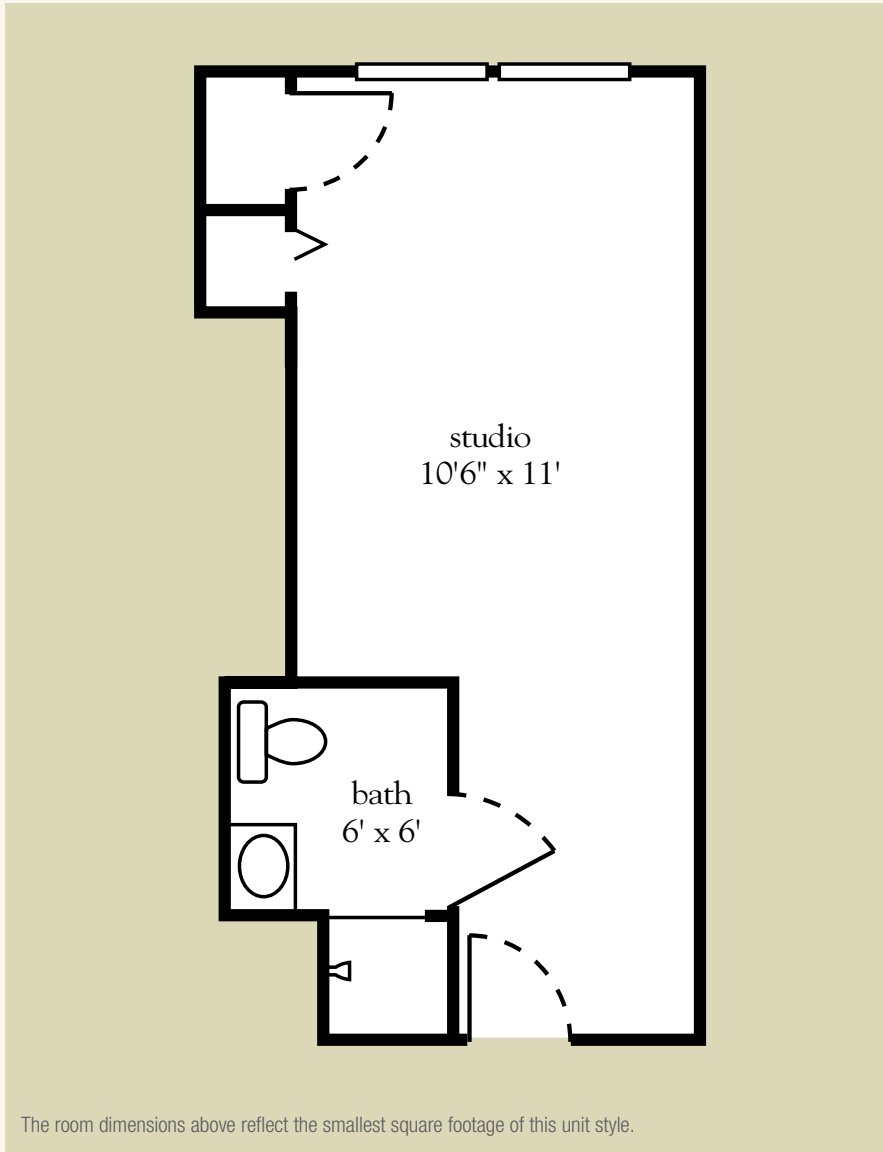
Atria COUNTRYSIDE

727.723.7110 | AtriaCountryside.com

Measurements are an approximation and can vary by apartment. All rates are subject to change. Assisted Living License # 9748

Life Guidance® Memory Care Studio

256-260 sq. ft.



Memory Care Studio Floor Plan

Date _____ Name _____

Apartment No. _____ Apartment Rate _____ Expires _____

Notes _____

Atria COUNTRYSIDE

727.723.7110 | AtriaCountrySide.com

Measurements are an approximation and can vary by apartment.

Assisted Living License # 9748

203513