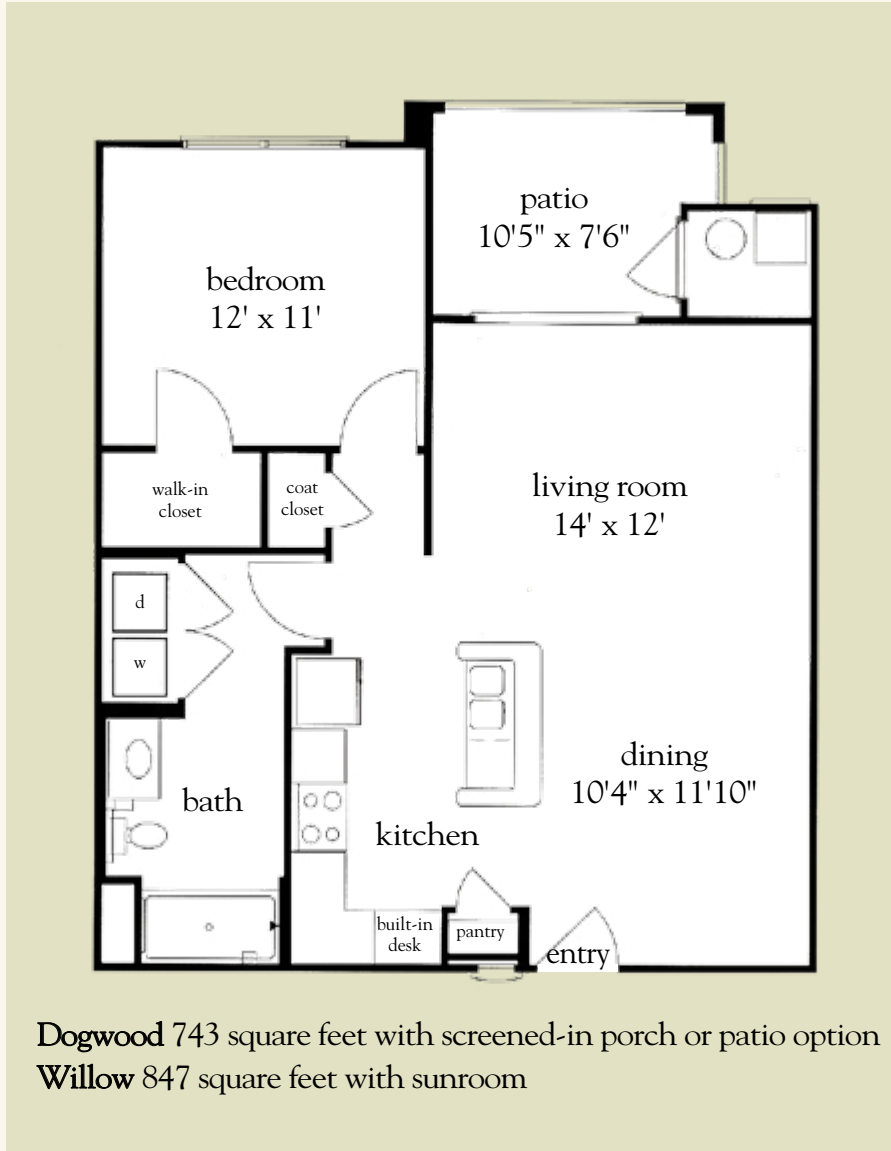


# Dogwood and Willow



One-Bedroom Floor Plan

Date \_\_\_\_\_ Name \_\_\_\_\_

Apartment No. \_\_\_\_\_ Apartment Rate \_\_\_\_\_ Expires \_\_\_\_\_

Notes \_\_\_\_\_

\_\_\_\_\_

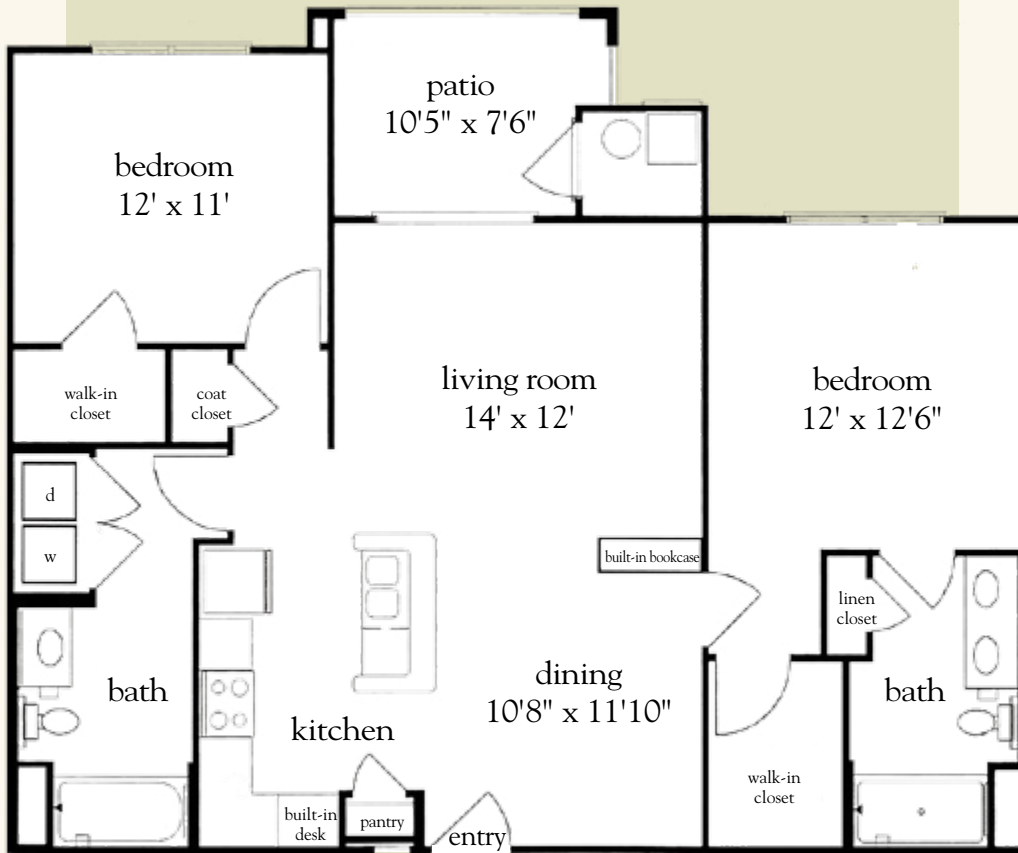
\_\_\_\_\_

*Atria* OAKRIDGE

919.848.2088 | AtriaOakridge.com

Measurements are an approximation and can vary by apartment.

# Birch and Maple



**Birch** 1,044 square feet with screened-in porch or patio option  
**Maple** 1,149 square feet with sunroom

Date \_\_\_\_\_ Name \_\_\_\_\_

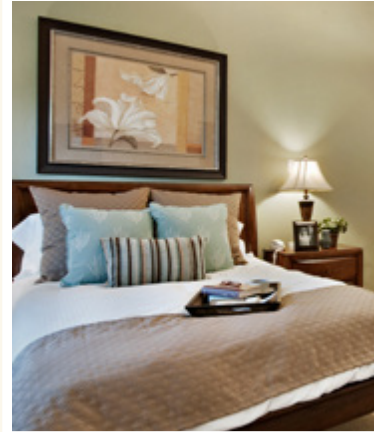
Apartment No. \_\_\_\_\_ Apartment Rate \_\_\_\_\_ Expires \_\_\_\_\_

Notes \_\_\_\_\_

*Atria* OAKRIDGE

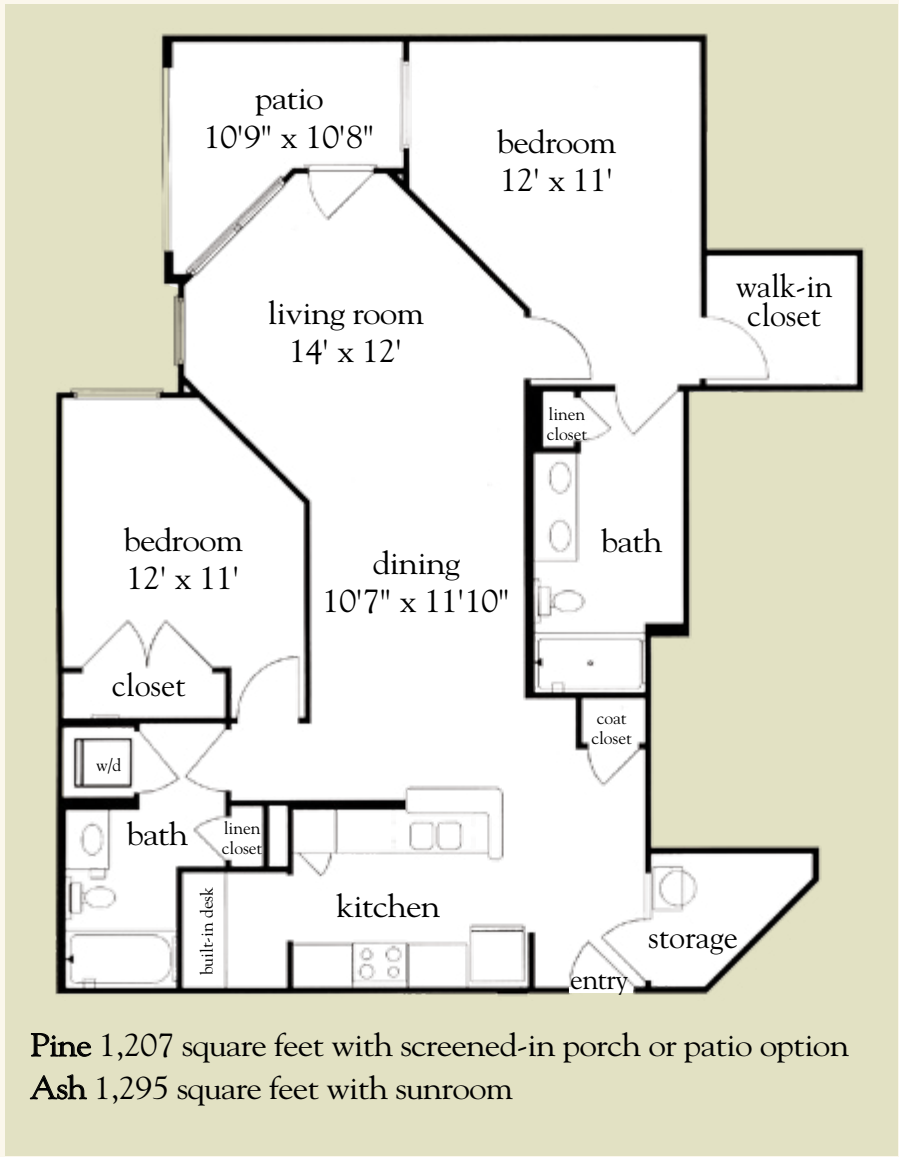
919.848.2088 | AtriaOakridge.com

Measurements are an approximation and can vary by apartment.



Two-Bedroom Floor Plan

# Pine and Ash



Two-Bedroom Floor Plan

Date \_\_\_\_\_ Name \_\_\_\_\_

Apartment No. \_\_\_\_\_ Apartment Rate \_\_\_\_\_ Expires \_\_\_\_\_

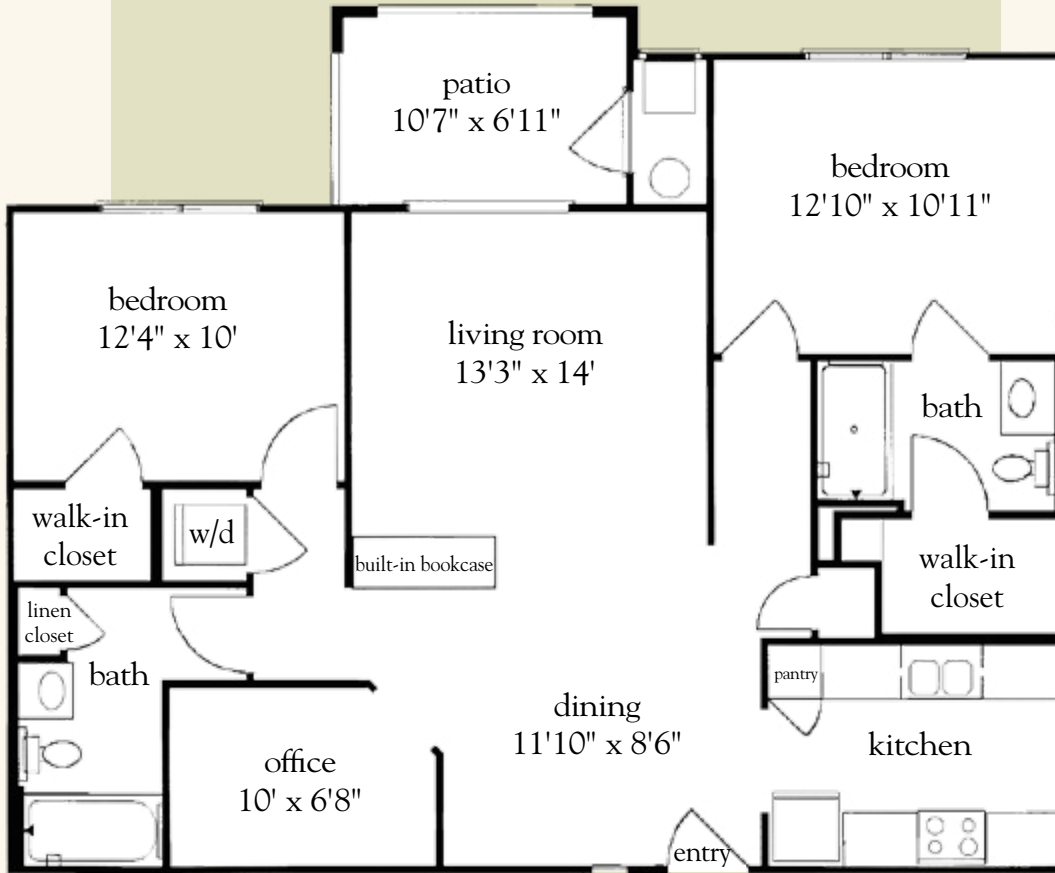
Notes \_\_\_\_\_

\_\_\_\_\_

\_\_\_\_\_

*Atria* OAKRIDGE  
 919.848.2088 | AtriaOakridge.com  
 Measurements are an approximation and can vary by apartment.

# Spruce and Oak



**Spruce** 1,168 square feet with screened-in porch or patio option  
**Oak** 1,196 square feet with sunroom

Date \_\_\_\_\_ Name \_\_\_\_\_

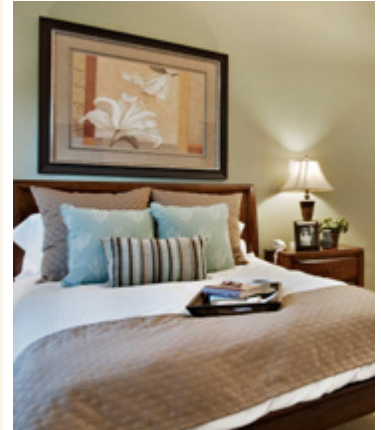
Apartment No. \_\_\_\_\_ Apartment Rate \_\_\_\_\_ Expires \_\_\_\_\_

Notes \_\_\_\_\_

*Atria* OAKRIDGE

919.848.2088 | AtriaOakridge.com

Measurements are an approximation and can vary by apartment.



Two-Bedroom Floor Plan