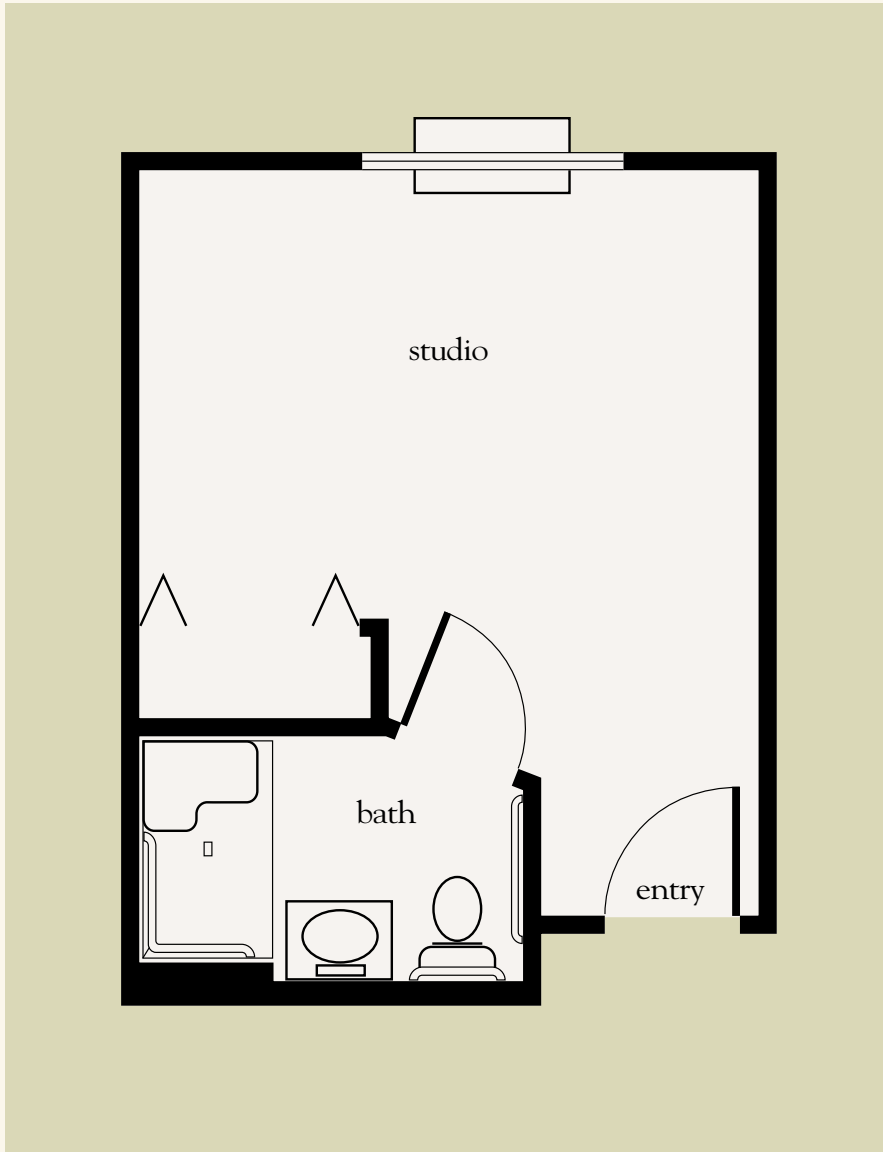


Life Guidance[®] Memory Care Studio



Date _____ Name _____

Apartment No. _____ Apartment Rate _____ Expires _____

Notes _____

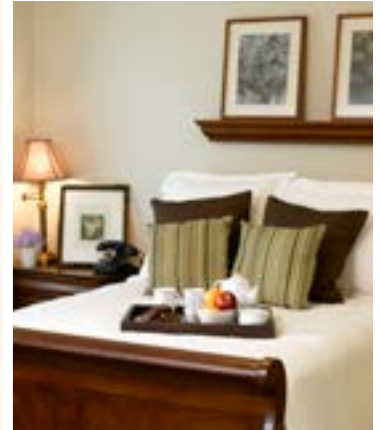
Atria Park OF LAKE FOREST

407.322.2207 | AtriaLakeForest.com

All measurements are an approximation and can vary by apartment.

Assisted Living License # 10233

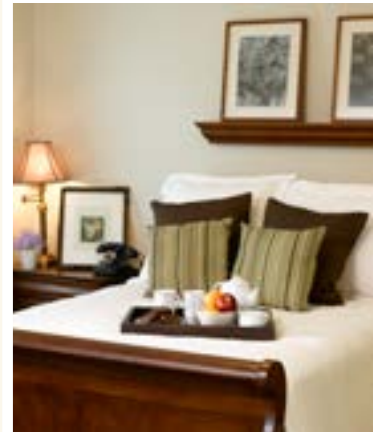
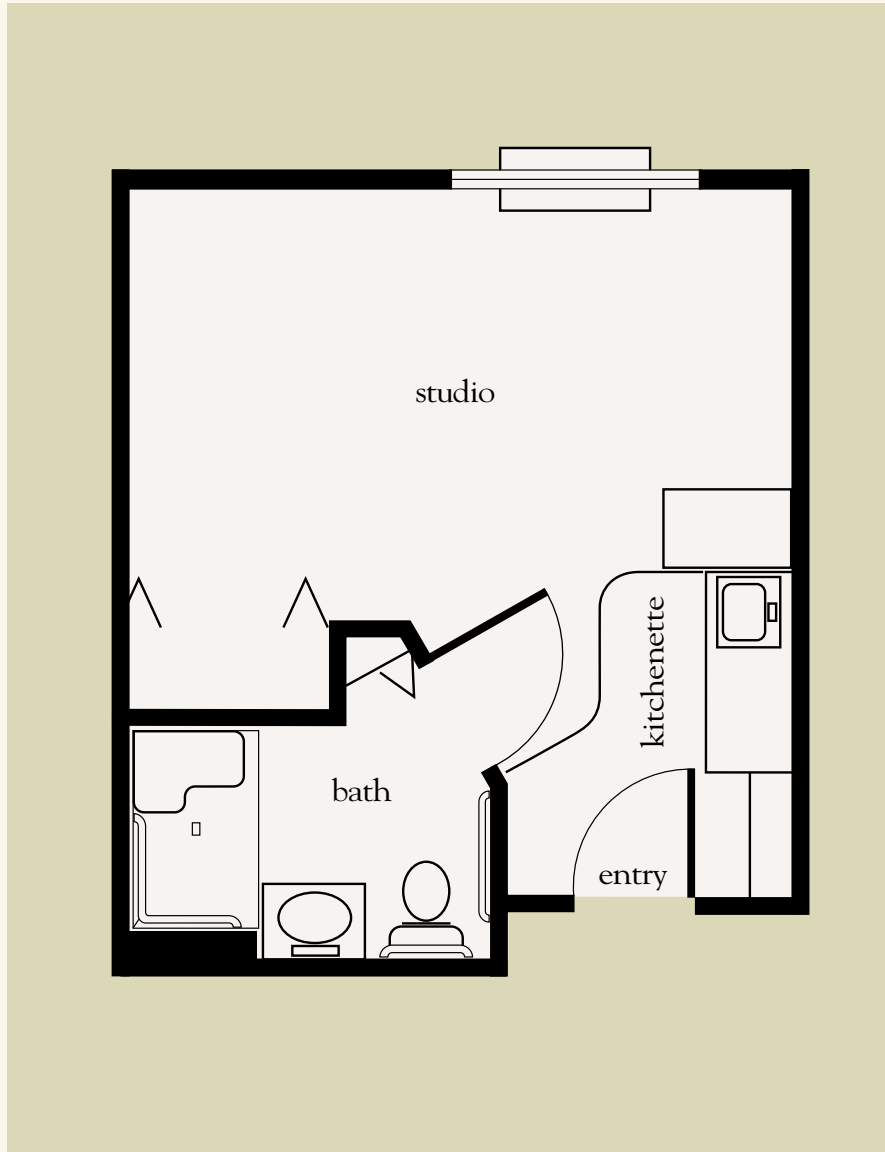
270-360 sq. ft.



Memory Care Studio Floor Plan

Studio

315 sq. ft.



Studio Floor Plan

Date _____ Name _____

Apartment No. _____ Apartment Rate _____ Expires _____

Notes _____

Atria Park OF LAKE FOREST

407.322.2207 | AtriaLakeForest.com

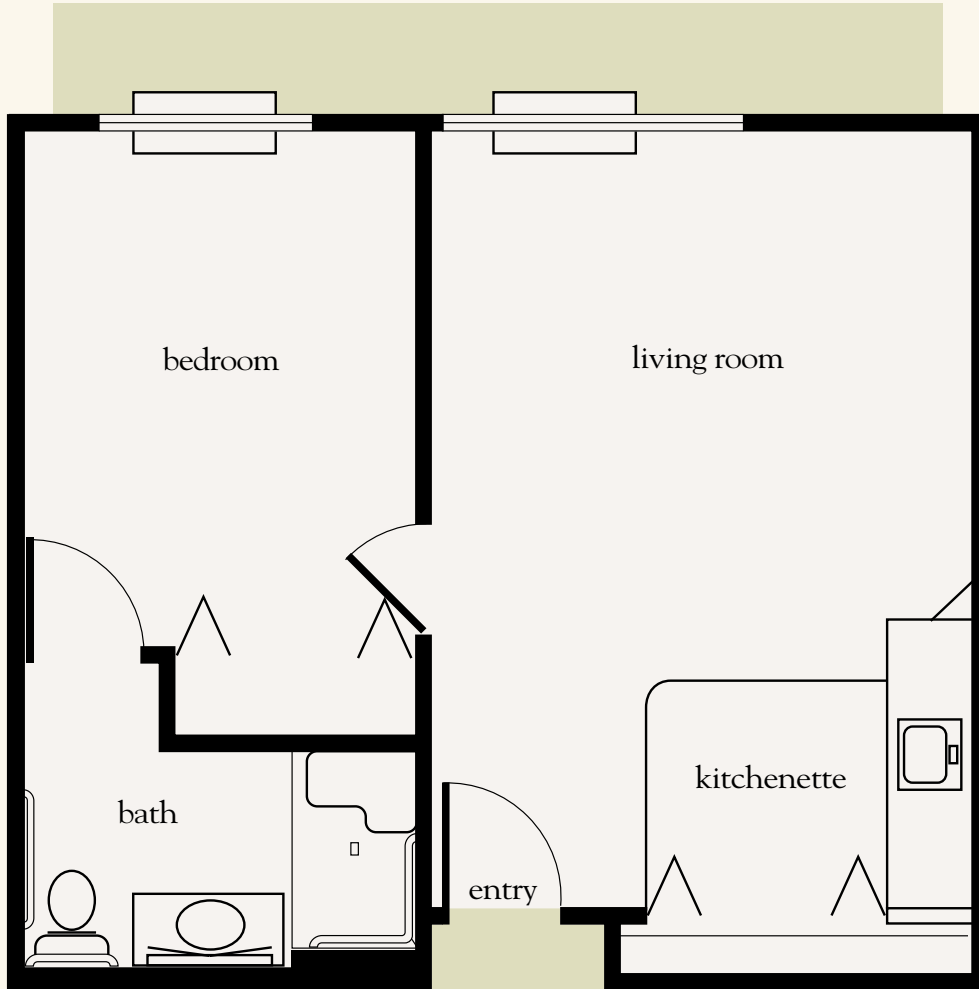
All measurements are an approximation and can vary by apartment.

Assisted Living License # 10233

167880

One Bedroom

485 sq. ft.



One-Bedroom Floor Plan

Date _____ Name _____

Apartment No. _____ Apartment Rate _____ Expires _____

Notes _____

Atria Park OF LAKE FOREST

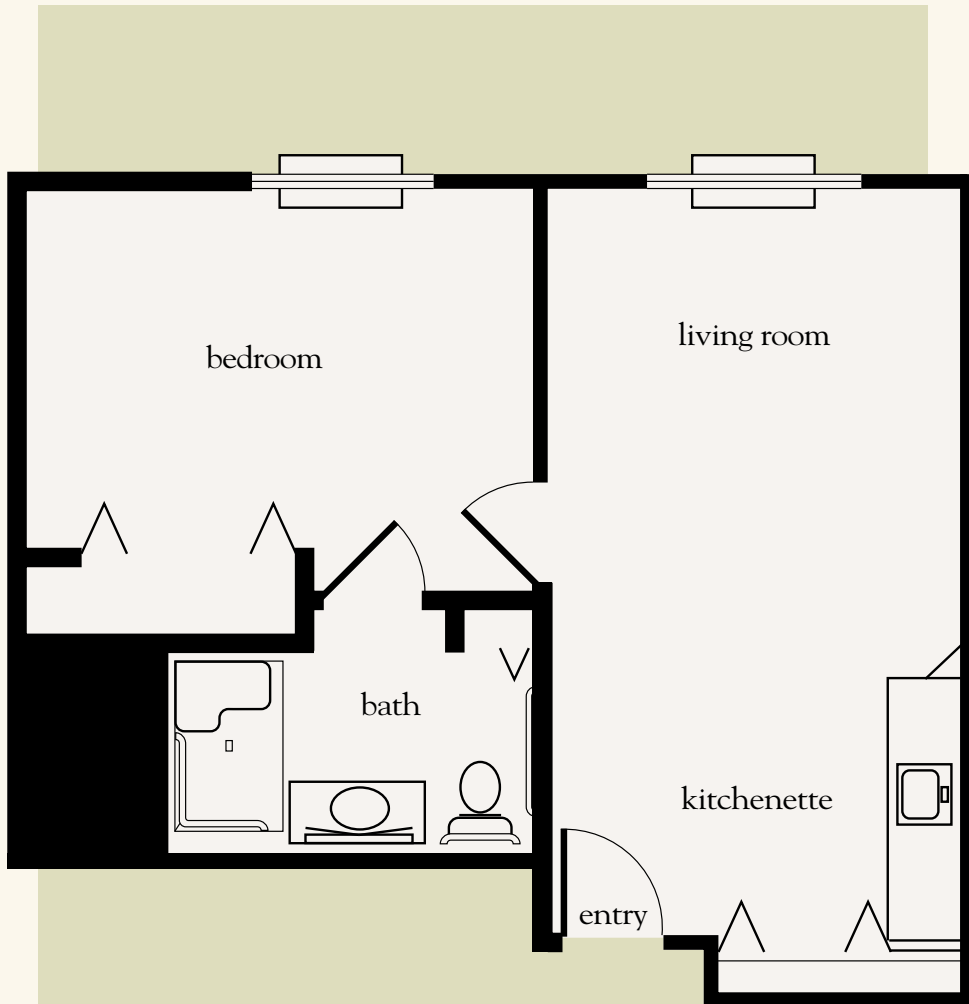
407.322.2207 | AtriaLakeForest.com

All measurements are an approximation and can vary by apartment.

Assisted Living License # 10233

One Bedroom Deluxe

510 sq. ft.



One-Bedroom Deluxe Floor Plan

Date _____ Name _____

Apartment No. _____ Apartment Rate _____ Expires _____

Notes _____

Atria Park OF LAKE FOREST

407.322.2207 | AtriaLakeForest.com

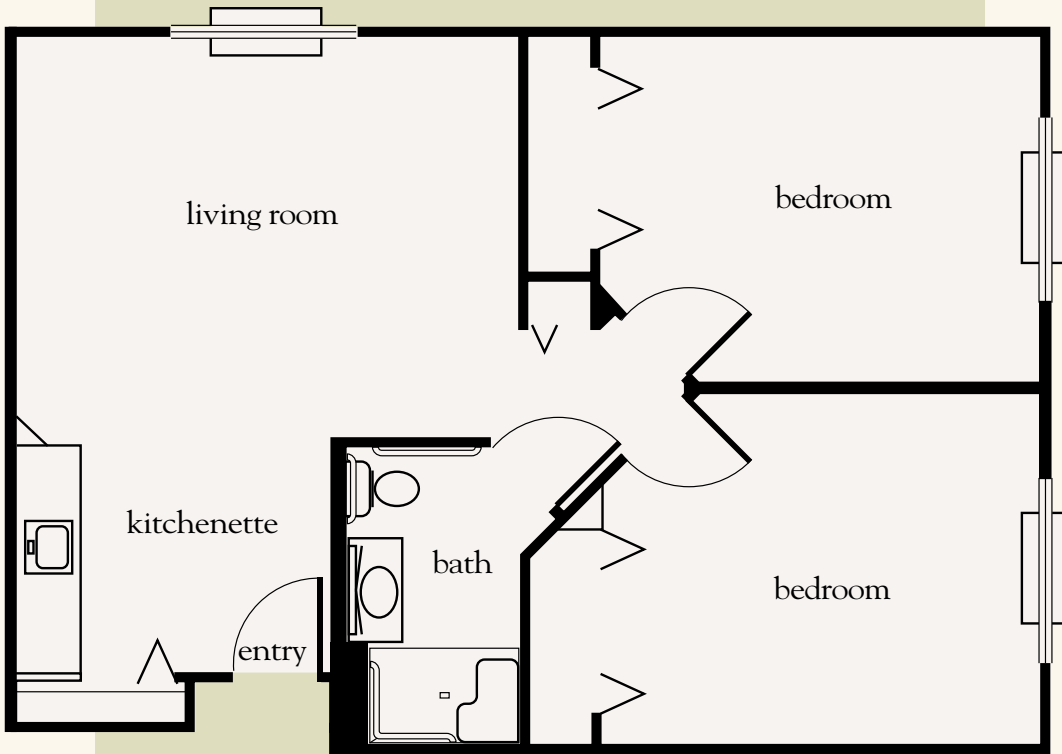
All measurements are an approximation and can vary by apartment.

Assisted Living License # 10233

167880

Two Bedroom

775 sq. ft.



Two-Bedroom Floor Plan

Date _____ Name _____

Apartment No. _____ Apartment Rate _____ Expires _____

Notes _____

Atria Park OF LAKE FOREST

407.322.2207 | AtriaLakeForest.com

All measurements are an approximation and can vary by apartment.

Assisted Living License # 10233