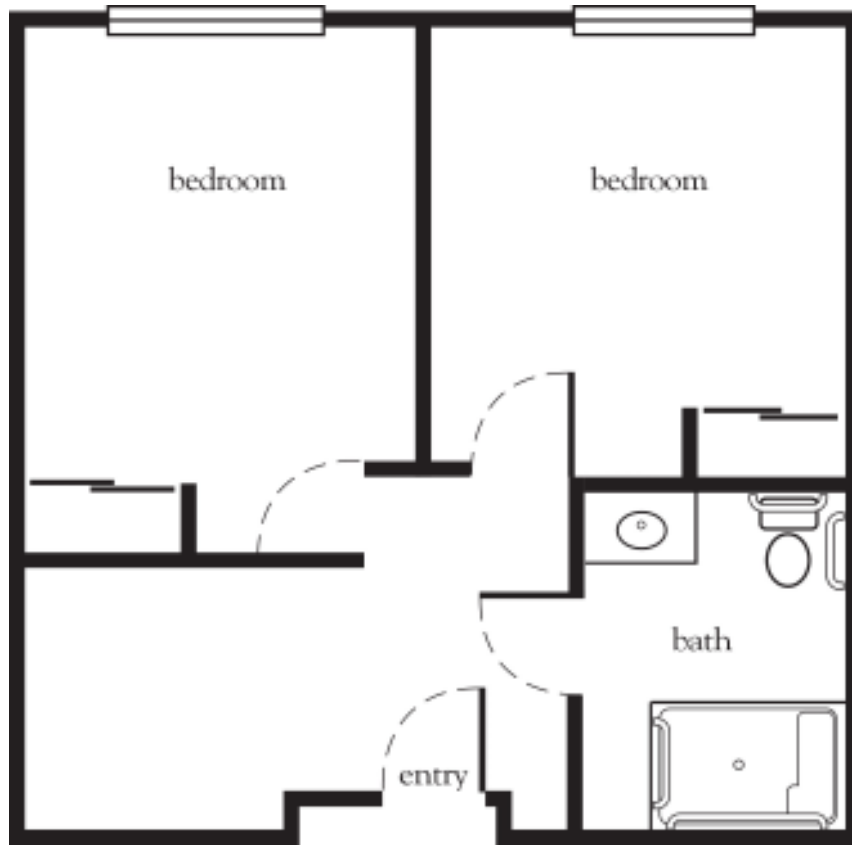


Life Guidance® Memory Care Semi-Private Studio



Apartment No. _____ Square Footage _____ Apartment Rate _____

Notes _____

Date Quoted _____ Quoted by _____ Rate Expires _____

Atria CROSSROADS PLACE

860.444.6700 | AtriaCrossroadsPlace.com

Measurements are an approximation and can vary by apartment.
All rates are subject to change.