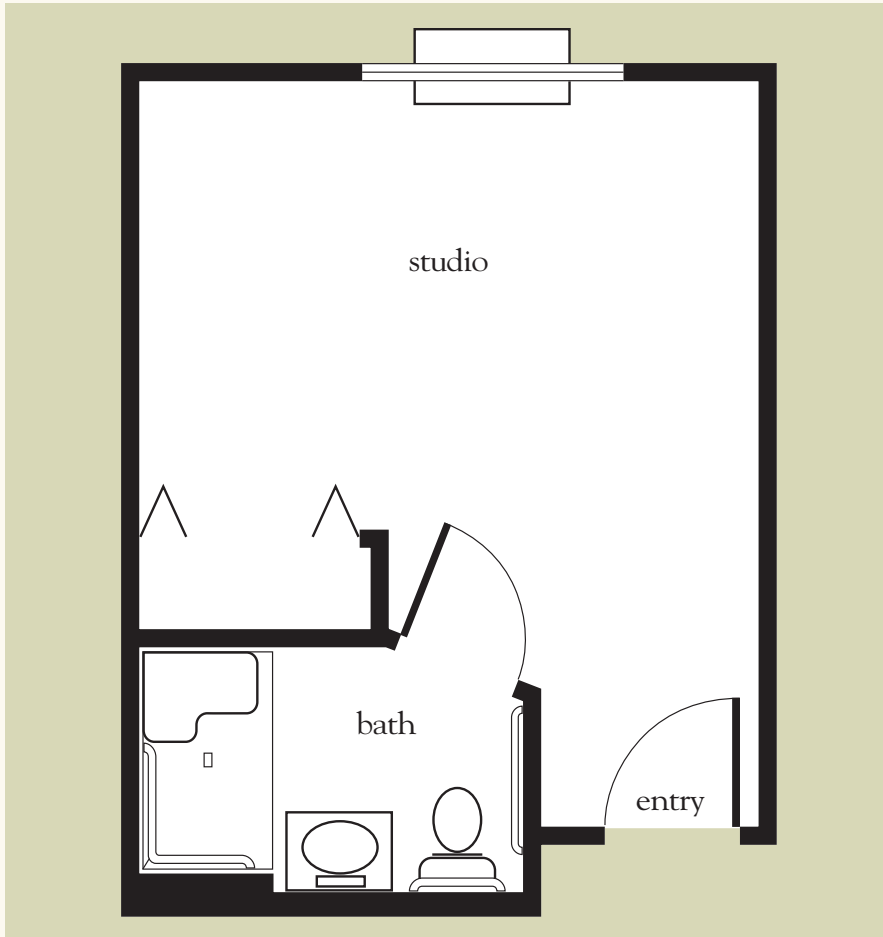


Life Guidance[®] Memory Care Studio



Apartment No. _____ Apartment Rate _____

Notes _____

Name _____ Date _____

Expires _____

Atria Park OF LAKE FOREST

407.322.2207 | AtriaLakeForest.com

Measurements are an approximation and can vary by apartment.
Apartment rate is subject to change and includes Level 1 Care.

Assisted Living License # 10233



Memory Care Studio Floor Plan