

Apartment No. _____ Apartment Rate _____

Notes _____

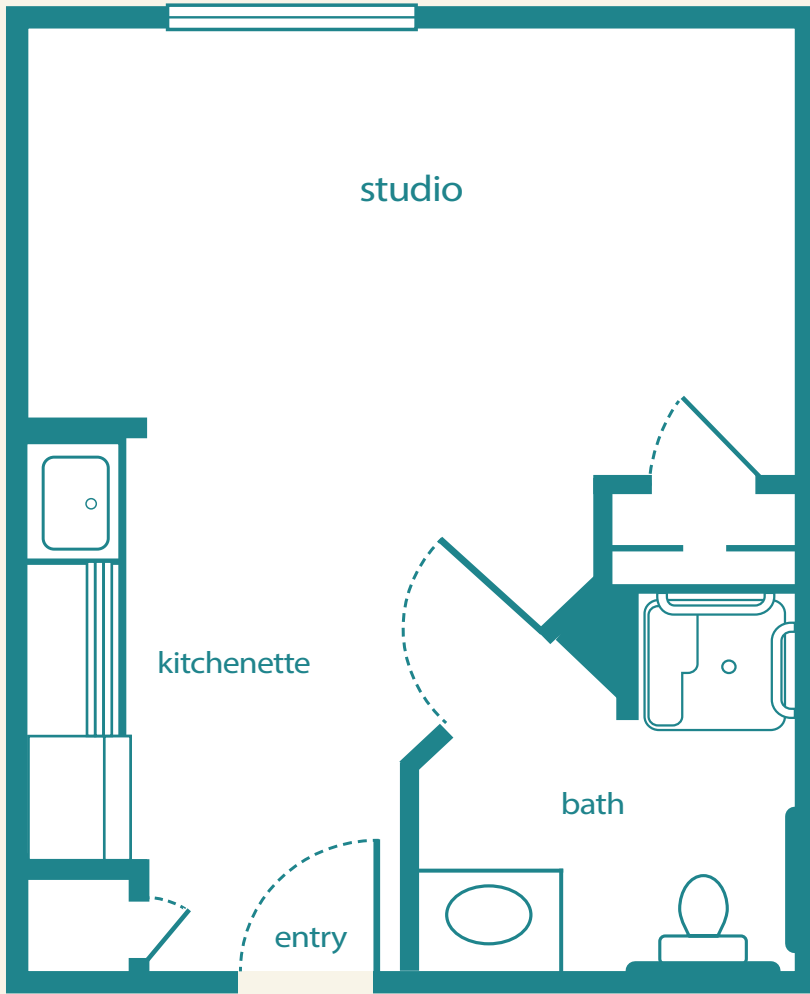
Name _____ Date _____

Expires _____

239.217.5900 | GladwellFortMyers.com

Measurements are an approximation and can vary by apartment.
All rates are subject to change.

Assisted Living License #12800



Apartment No. _____ Apartment Rate _____

Notes _____

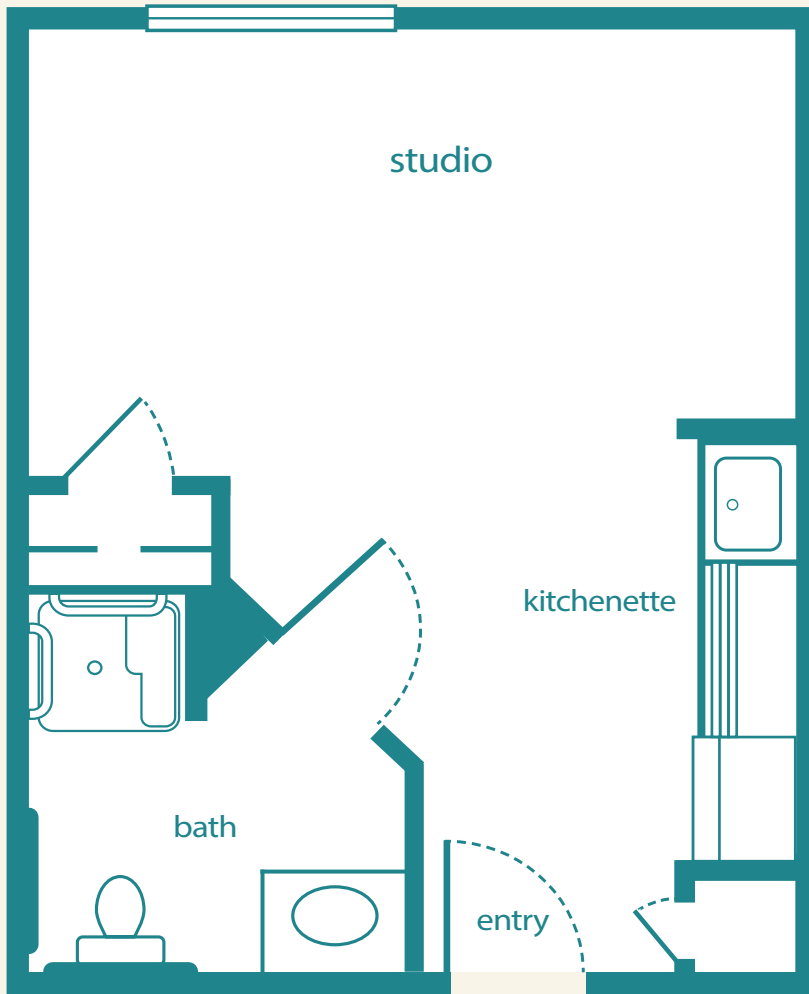
Name _____ Date _____

Expires _____

239.217.5900 | GladwellFortMyers.com

Measurements are an approximation and can vary by apartment.
All rates are subject to change.

Assisted Living License #12800



Apartment No. _____ Apartment Rate _____

Notes _____

Name _____ Date _____

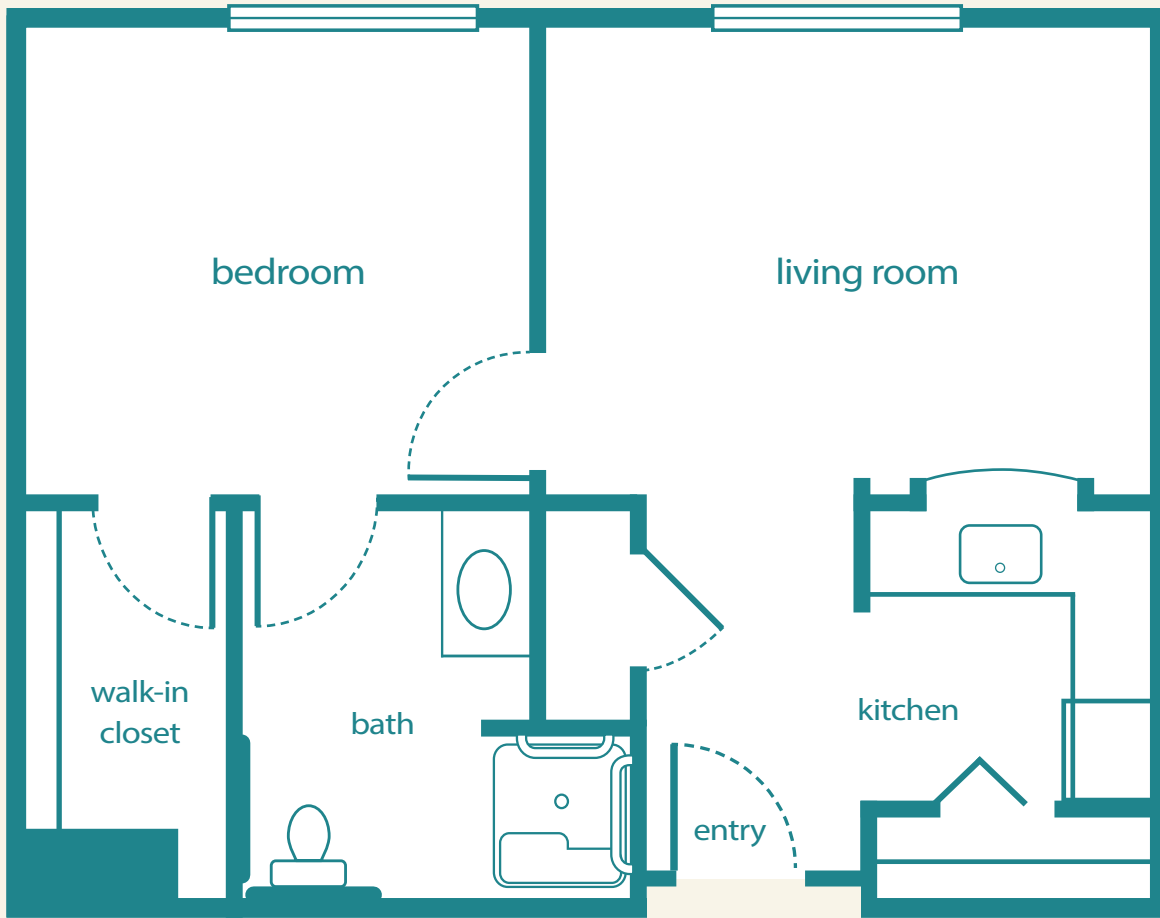
Expires _____

239.217.5900 | GladwellFortMyers.com

Measurements are an approximation and can vary by apartment.
All rates are subject to change.

Assisted Living License #12800

Gladwell Fort Myers
One-Bedroom Floor Plan



Apartment No. _____ Apartment Rate _____

Notes _____

Name _____ Date _____

Expires _____

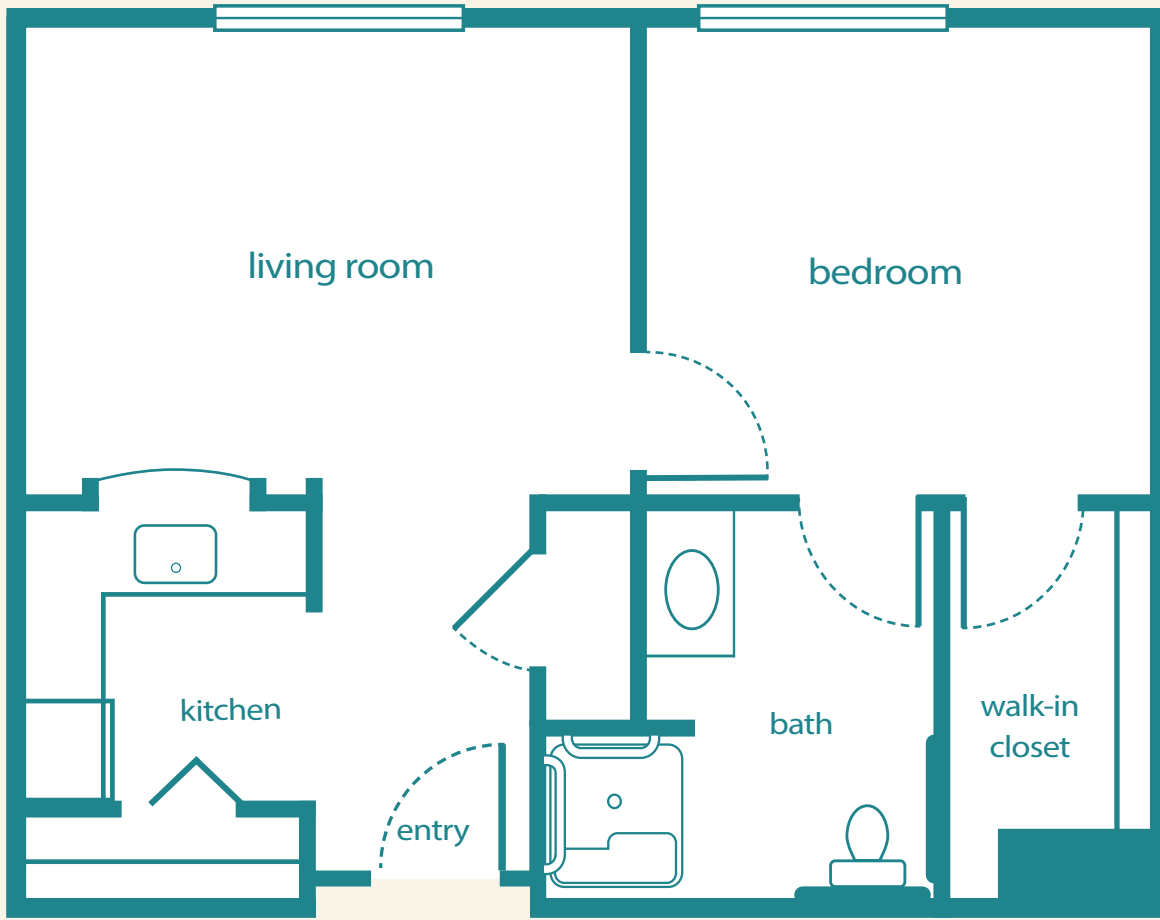
239.217.5900 | GladwellFortMyers.com

Measurements are an approximation and can vary by apartment.
All rates are subject to change.

Assisted Living License #12800

Gladwell[™]
BY ATRIA SENIOR LIVING

Gladwell Fort Myers
One-Bedroom Floor Plan



Apartment No. _____ Apartment Rate _____

Notes _____

Name _____ Date _____

Expires _____

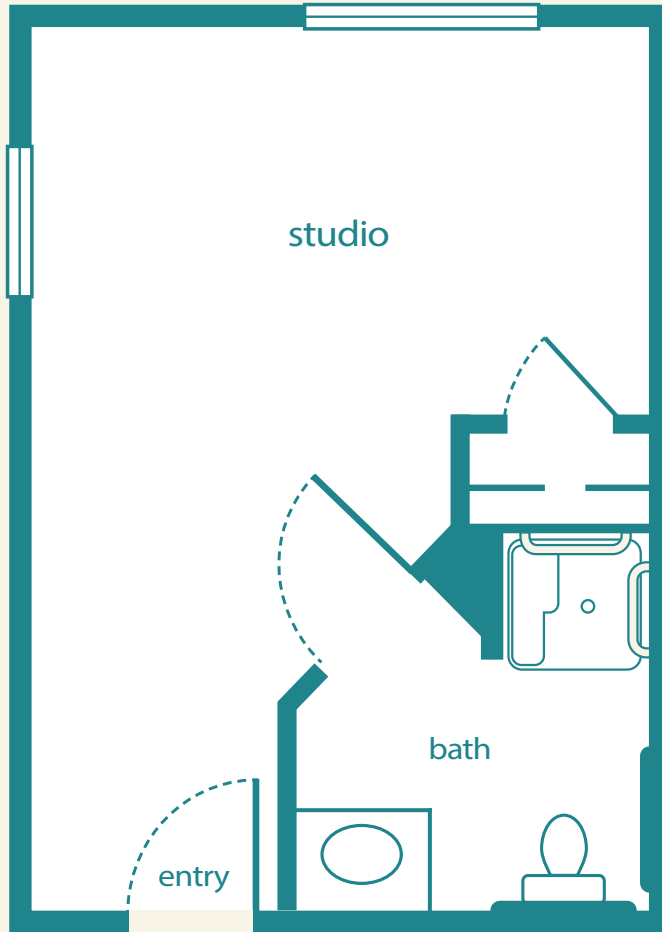
239.217.5900 | GladwellFortMyers.com

Measurements are an approximation and can vary by apartment.
All rates are subject to change.

Assisted Living License #12800

Gladwell
BY ATRIA SENIOR LIVING

Gladwell Fort Myers
Memory Care Studio Floor Plan



Apartment No. _____ Apartment Rate _____

Notes _____

Name _____ Date _____

Expires _____

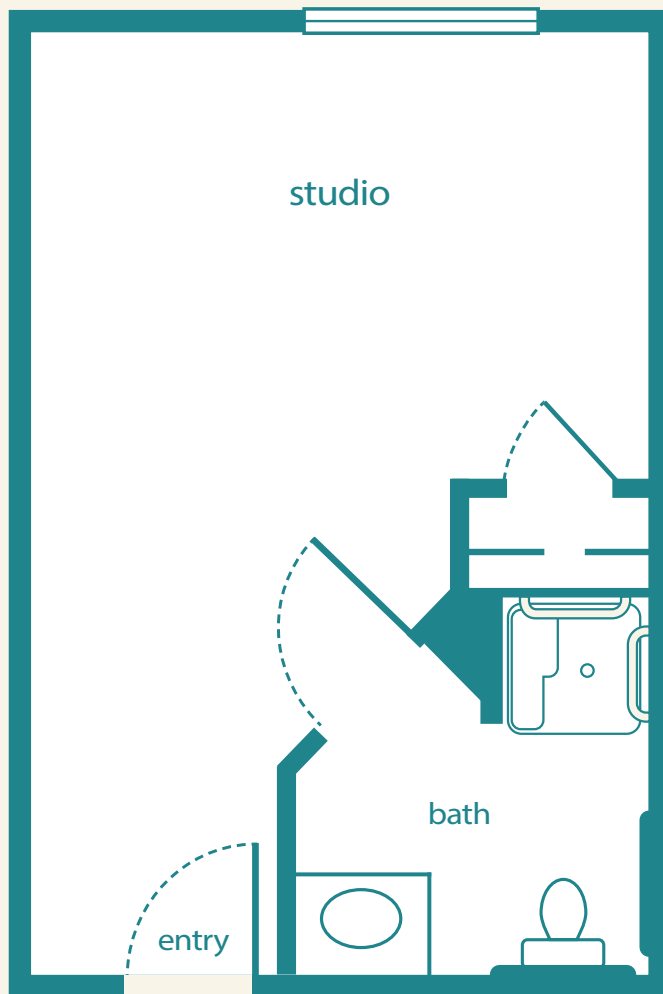
239.217.5900 | GladwellFortMyers.com

Measurements are an approximation and can vary by apartment.
Apartment rate is subject to change and includes Level 1 Care.

Assisted Living License #12800

Gladwell[™]
BY ATRIA SENIOR LIVING

Gladwell Fort Myers
Memory Care Studio Floor Plan



Apartment No. _____ Apartment Rate _____

Notes _____

Name _____ Date _____

Expires _____

239.217.5900 | GladwellFortMyers.com

Measurements are an approximation and can vary by apartment.
Apartment rate is subject to change and includes Level 1 Care.

Assisted Living License #12800

Gladwell™
BY ATRIA SENIOR LIVING